

Data !

Annual Planning Retreat

November 29, 2012

AHC's Credit Students

- Female 53% , Male 47%
- Hispanic 47% , White 41% , Other 12%
- Age 18-19 24% , Age 20-21 19% ,
Age 22-24 15% , Age 25-29 14%

Enrolled Units

- 12 or more units is considered full-time
- 31% full-time students; 69% part-time

Top Degrees/Certificates

- Liberal Arts (66% of AA awards)
- Nursing (22% of AS awards)
- Fire Technology (18% of AS awards)
- Cosmetology (65% of 18-30 unit Certificates)
- Transfer Studies (72% of 30-60 unit Certificates)
- Drama (100% of 60+unit Certificates)

Top Universities for Transfer

- Cal Poly, San Luis Obispo
- UC Santa Barbara
- Cal State Northridge

Top Feeder High Schools

High School	Number of 2011 HS Graduates	Entering AHC in 2011-2012	Percent
Righetti High	504	239	47%
Pioneer Valley High	469	219	47%
Santa Maria High	433	187	43%
Cabrillo High	326	104	32%
Lompoc High	263	94	36%
Nipomo High	237	94	40%
Arroyo Grande High	452	74	16%
St. Joseph High	167	60	36%
Delta High	133	43	32%
Santa Ynez Valley High	244	30	12%

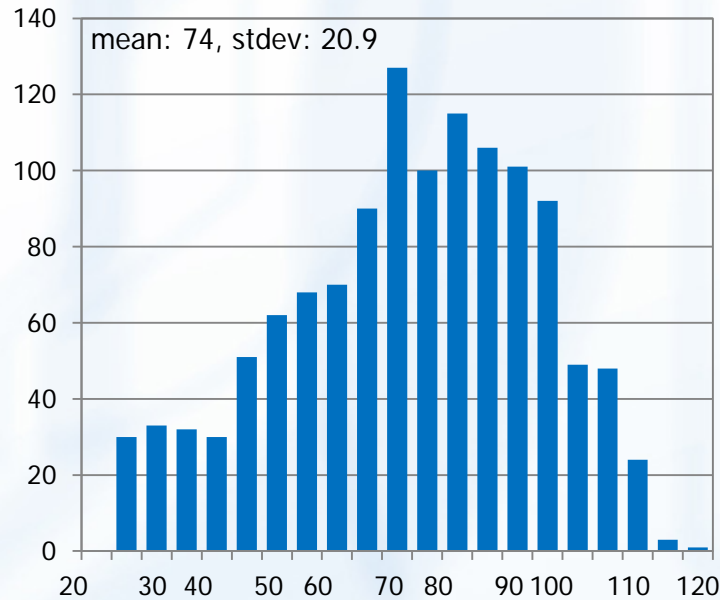
START Test Scores

- Reading Comprehension
- Sentence Skills / Writing
- Math
 - Arithmetic
 - Elementary Algebra
 - College Level

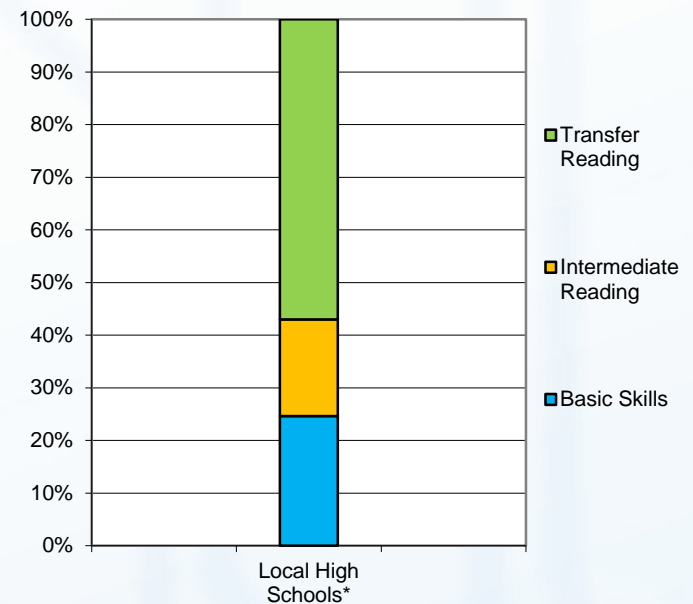
START Test Scores

2011 Graduates from All High Schools

- Reading Comprehension



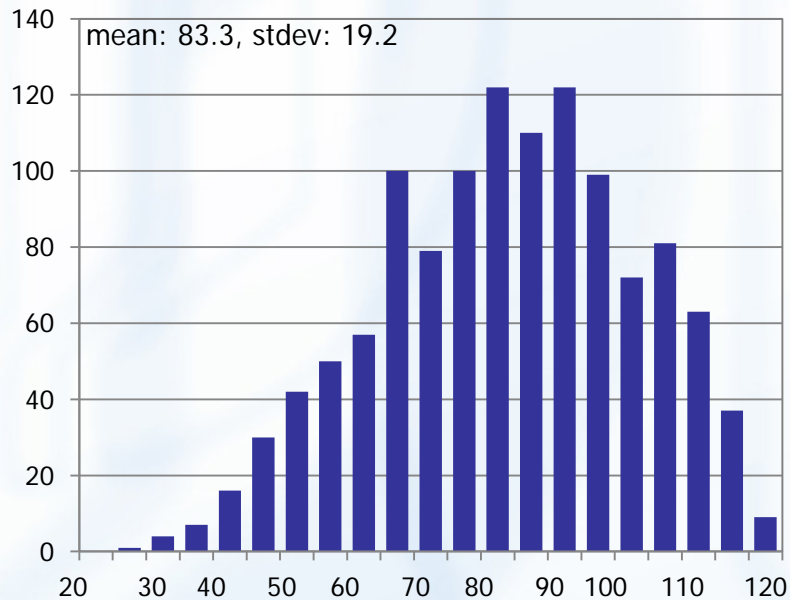
2011 Local High School Graduates
AHC Reading Placement



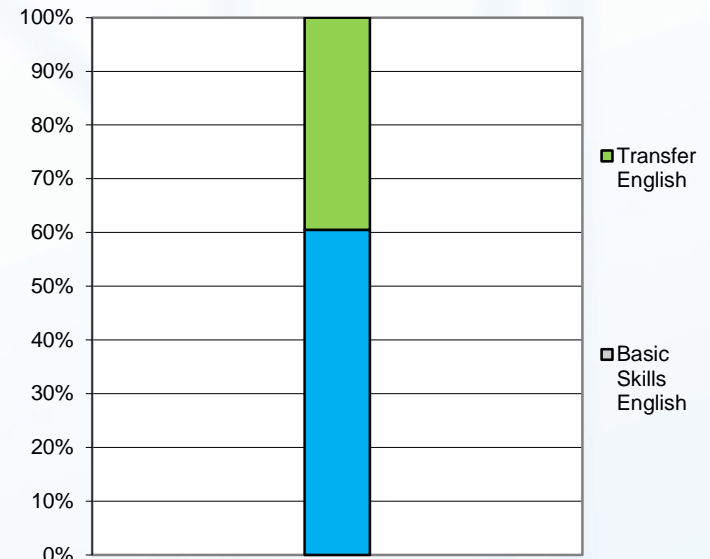
START Test Scores

2011 Graduates from All High Schools

- Sentence Skills



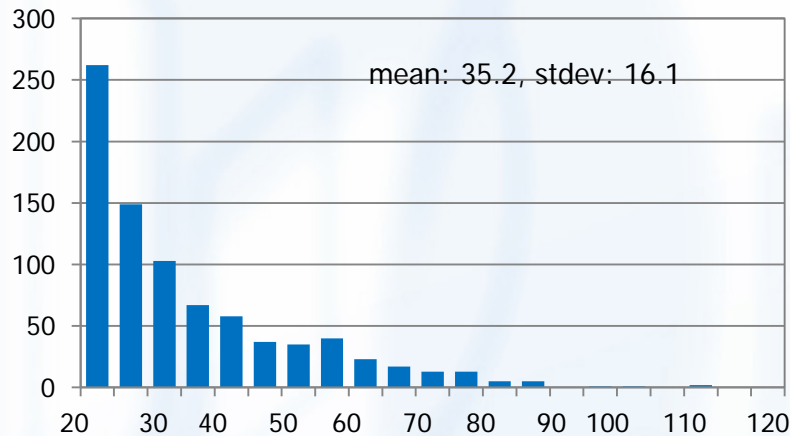
2011 Local High School Graduates
AHC English Placement



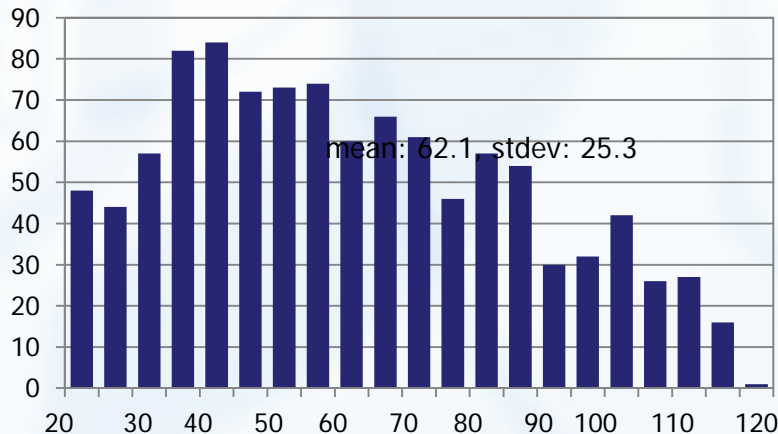
START Test Scores

2011 Graduates from All High Schools

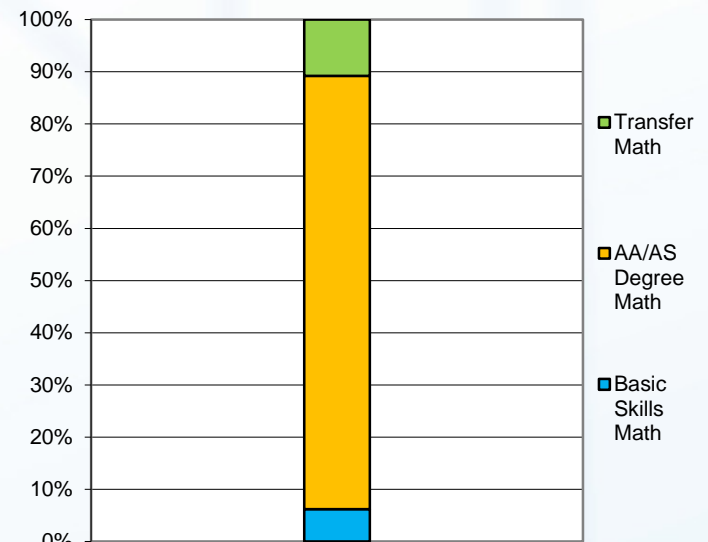
- College Level Math



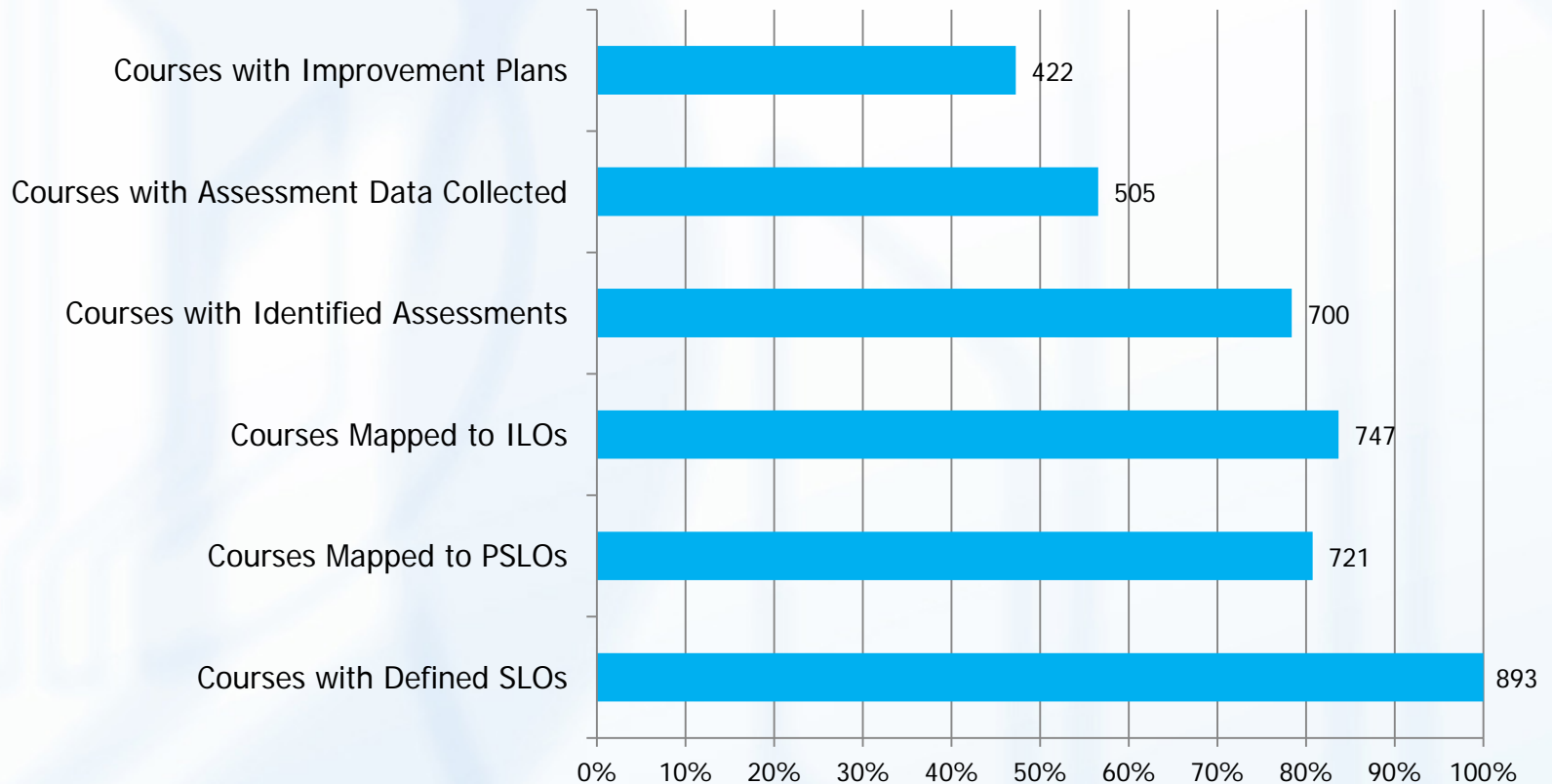
- Elementary Algebra



2011 Local High School Graduates
AHC Math Placement



Assessment of Student Learning Outcomes



Institutional Learning Outcomes

ILO	Exceeds	Meets	Below
Communication	21%	68%	11%
Critical Thinking & Problem Solving	25%	63%	12%
Information & Technology Literacy	51%	36%	13%
Quantitative Literacy	49%	31%	20%
Scientific Literacy	34%	44%	22%
Personal Responsibility & Development	23%	62%	15%
Global Awareness & Cultural Competence	53%	33%	14%

(eLumen data)

Student Success

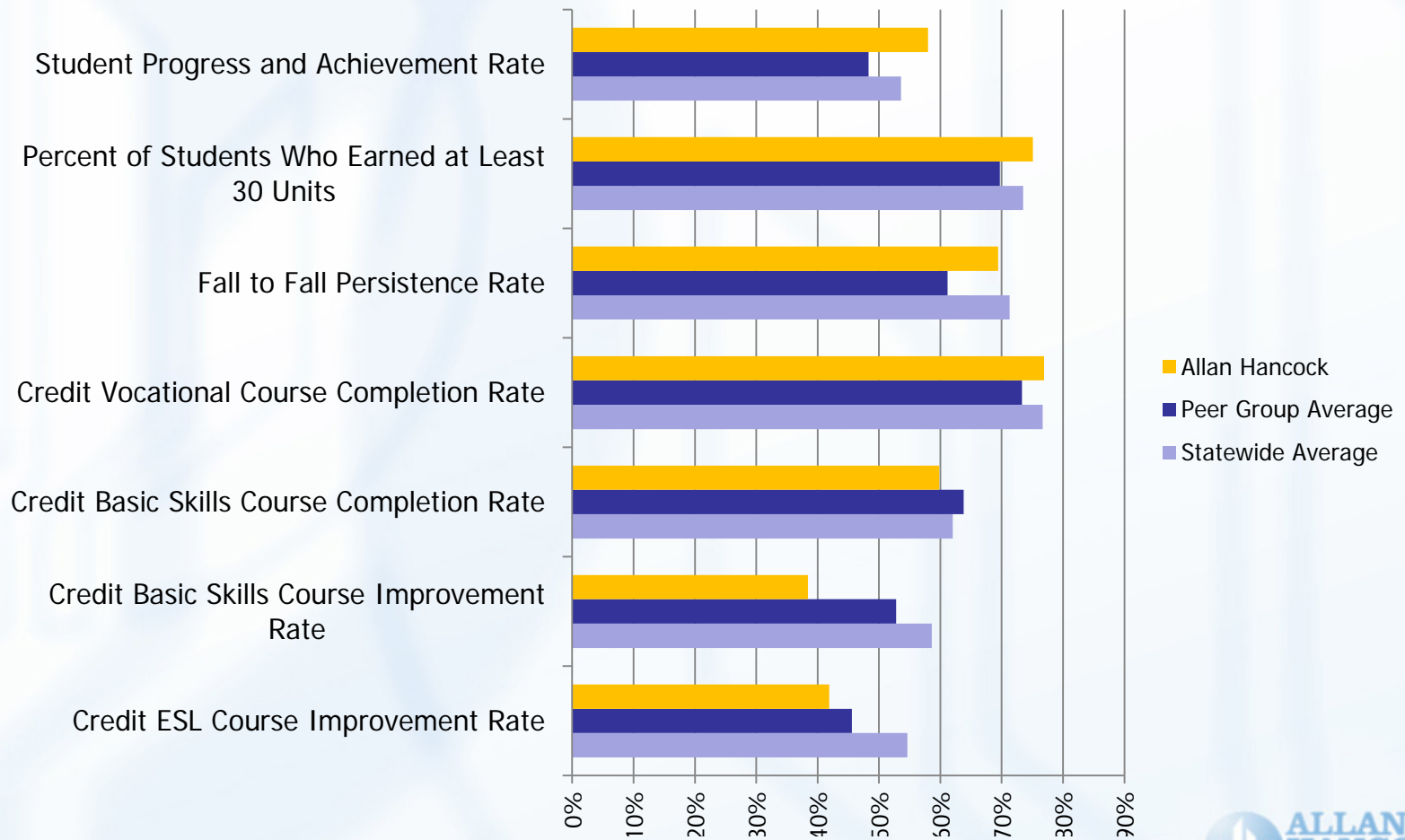
- Successful course completion
- Successful completion of basic skills development
- Successful completion of first collegiate level mathematics course
- Successful completion of first 15 semester units
- Successful completion of first 30 semester units
- Certificate, Degree, and/or Transfer

(Student Success Taskforce)

Course Retention & Success

- Credit course retention (received an official end of term letter grade, not W)
85%
- Credit course success (A, B, C, CR, P)
67%

Accountability Reporting for Community Colleges (ARCC) Performance Indicators



ARCC Performance Indicators

	2002-03 to 2007-08	2003-04 to 2008-09	2004-05 to 2009-10	2005-06 to 2010-11
Student progress and achievement rate	53%	53%	57%	58%
Percent of students who earned at least 30 units	71%	72%	74%	75%

ARCC Performance Indicators

	Fall 2006 to Fall 2007	Fall 2007 to Fall 2008	Fall 2008 to Fall 2009	Fall 2009 to Fall 2010
Persistence rate	70%	71%	70%	69%

ARCC Performance Indicators

	2007-08	2008-09	2009-10	20010-11
Successful course completion rate for credit vocational	79%	78%	79%	77%
Successful course completion for credit basic skills	62%	63%	63%	60%

ARCC Performance Indicators

	2005-06 to 2007-08	2006-07 to 2008-09	2007-08 to 2009-10	2008-09 to 2010-11
ESL improvement rate	52%	48%	45%	42%
Basic skills improvement rate	345	32%	29%	38%

Basic Skills Performance

	<u>Retention</u>	<u>Success</u>
English	87%	64%
ESL	85%	62%
Math	82%	58%

Workforce Development

- Priority sectors our region is concentrating:
 - Small business and tourism
 - Manufacturing
 - Health care
- Emerging sectors for our region:
 - Ag, Water, and Environmental Technologies
 - Information & Communications Technologies / Digital Media

Impact of the California Community Colleges

- State's largest workforce provider, offering associate degrees and short-term job training certificates in more than 175 different fields.
- Train 70 percent of California nurses.
- Train 80 percent of firefighters, law enforcement personnel, and emergency medical technicians.
- 28 percent of University of California graduates and 54 percent of California State University graduates transfer from a community college.
- Students who earn a California Community College degree or certificate nearly double their earnings within three years.