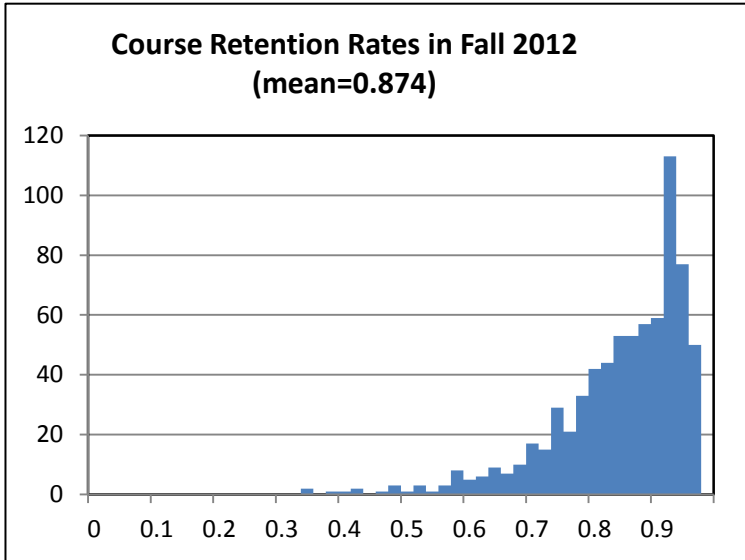


11. Key Performance Indicators

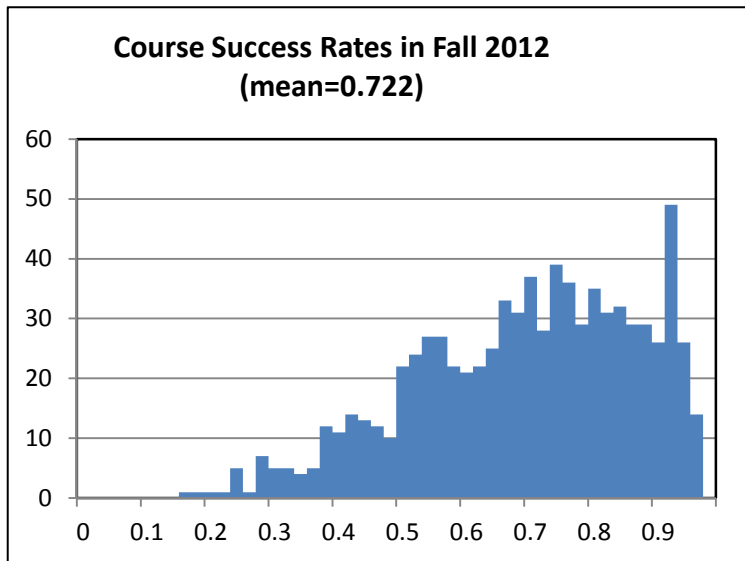
<i>Topic</i>	<i>Page</i>
<i>Retention and Success Rates</i>	<i>11-2</i>
<i>Statewide vs AHC Comparison of Retention and Success Rates</i>	<i>11-3</i>
<i>Retention and Success Rates by Discipline</i>	<i>11-5</i>
<i>Fall to Spring Persistence</i>	<i>11-16</i>
<i>Degrees and Certificates</i>	<i>11-17</i>
<i>Student Right-to-Know Completion and Transfer Rates</i>	<i>11-22</i>
<i>Transfers to CSU</i>	<i>11-23</i>
<i>Performance and Persistence of Transfer Students to AHC</i>	<i>11-25</i>
<i>Basic Skills Enrollment and Performance Indicators</i>	<i>11-26</i>

Retention and Success

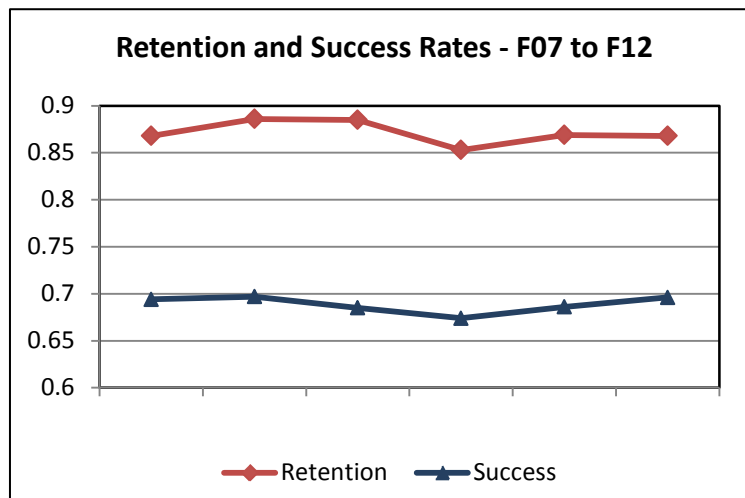
Retention and success rates are a measure of academic performance.



Retention rates are the sum of course enrollments receiving an official end of term letter grade of A, B, C, D, F*, CR, NC, I*, P, or NP divided by course enrollment. Courses with an enrollment of 10 or less were excluded in the histogram.



Successful course completion rates are the sum of course enrollments receiving an official end of term letter grade of A, B, C, CR, or P, divided by course enrollment. Courses with an enrollment of 10 or less were excluded in the histogram.



Term	Enrollment
Fall 2007	28467
Fall 2008	30223
Fall 2009	29912
Fall 2010	32335
Fall 2011	29217
Fall 2012	28559

Statewide vs AHC Comparison of Retention and Success Rates

Retention Rates

		Statewide		AHC		Difference	
Gender		Fall 2011	Fall 2012	Fall 2011	Fall 2012	Fall 2011	Fall 2012
Female	Enrollment	2159649	205099	15667	14732		
	Retention	85%	87%	86%	86%	1.2%	-0.4%
Male	Enrollment	1889446	1813316	13535	13519		
	Retention	85%	86%	88%	88%	2.9%	1.4%
TOTAL	Enrollment	4086357	3896889	29217	28264		
	Retention	85%	87%	87%	87%	2.0%	0.5%

		Statewide		AHC		Difference	
Ethnicity		Fall 2011	Fall 2012	Fall 2011	Fall 2012	Fall 2011	Fall 2012
African-American	Enrollment	321491	294854	880	809		
	Retention	79%	81%	86%	89%	7.4%	7.6%
American Indian	Enrollment	23006	19194	188	177		
	Retention	84%	84%	82%	79%	-1.8%	-5.9%
Asian	Enrollment	576990	542115	1224	1135		
	Retention	87%	88%	88%	90%	1.5%	1.0%
Hispanic	Enrollment	1493337	1525357	14465	14518		
	Retention	84%	86%	86%	86%	1.9%	0.0%
Multi-Ethnicity	Enrollment	132664	148155	1057	1149		
	Retention	84%	85%	88%	86%	3.9%	0.8%
Pacific Islander	Enrollment	23835	20863	136	135		
	Retention	82%	84%	88%	84%	5.7%	-0.8%
Unknown	Enrollment	229550	156826	52	7		
	Retention	85%	88%	85%	100%	-0.7%	12.2%
White	Enrollment	1285484	1189525	11215	10334		
	Retention	87%	88%	88%	89%	1.4%	0.6%
Total	Enrollment	4086357	3896889	29217	28264		
	Retention	85%	87%	87%	87%	2.0%	0.5%

--

The retention rate measures how well an institution is performing in retaining students in the learning process to completion of the course, regardless of the achievement level of students. A high retention rate may reflect, among other factors, a high level of student satisfaction with the instructional material and the absence of personal problems which interfere with college attendance.

Statewide vs AHC Comparison of Retention and Success Rates

Success Rates

		Statewide		AHC		Difference	
Gender		Fall 2011	Fall 2012	Fall 2011	Fall 2012	Fall 2011	Fall 2012
Female	Enrollment	2159649	205099	15667	14732		
	Success	70%	71%	69%	71%	-0.9%	-0.5%
Male	Enrollment	1889446	1813316	13535	13519		
	Success	68%	69%	69%	70%	0.9%	1.3%
TOTAL	Enrollment	4086357	3896889	29217	28264		
	Success	69%	70%	69%	70%	0.0%	0.3%

		Statewide		AHC		Difference	
Ethnicity		Fall 2011	Fall 2012	Fall 2011	Fall 2012	Fall 2011	Fall 2012
African-American	Enrollment	321491	294854	880	809		
	Success	56%	58%	64%	65%	8.2%	7.5%
American Indian	Enrollment	23006	19194	188	177		
	Success	65%	66%	62%	63%	-3.0%	-3.0%
Asian	Enrollment	576990	542115	1224	1135		
	Success	74%	76%	75%	78%	1.1%	2.1%
Hispanic	Enrollment	1493337	1525357	14465	14518		
	Success	65%	67%	64%	67%	-0.6%	0.0%
Multi-Ethnicity	Enrollment	132664	148155	1057	1149		
	Success	66%	67%	70%	70%	3.6%	2.6%
Pacific Islander	Enrollment	23835	20863	136	135		
	Success	63%	65%	70%	67%	6.8%	2.8%
Unknown	Enrollment	229550	156826	52	7		
	Success	72%	74%	75%	100%	3.4%	25.8%
White	Enrollment	1285484	1189525	11215	10334		
	Success	74%	75%	74%	75%	0.1%	0.6%
Total	Enrollment	4086357	3896889	29217	28264		
	Success	69%	70%	69%	70%	0.0%	0.3%



Retention and Success Rates by Discipline

Discipline	Fall 2007	Fall 2008	Fall 2009	Fall 2010	Fall 2011	Fall 2012
------------	-----------	-----------	-----------	-----------	-----------	-----------

Applied Social Sciences - BAS

Administration of Justice (AJ)	# sections	11	12	12	13	11	12
	enrollment	229	344	407	558	457	479
	retention	0.89	0.92	0.89	0.92	0.91	0.91
	success rate	0.80	0.80	0.75	0.78	0.65	0.75

Culinary Arts (CA)	# sections		6	7	8	6
	enrollment		122	127	123	104
	retention		0.93	0.92	0.86	0.94
	success rate		0.72	0.86	0.81	0.81

Early Childhood Studies (ECS)	# sections	39	45	38	35	33	32
	enrollment	818	920	1013	896	877	739
	retention	0.92	0.93	0.91	0.87	0.87	0.91
	success rate	0.78	0.77	0.72	0.73	0.71	0.76

Education (EDUC)	# sections	1	2	2
	enrollment	18	37	27
	retention	1.00	0.89	0.93
	success rate	0.89	0.81	0.70

Family & Consumer Science (FCS)	# sections	25	23	5	6	4
	enrollment	401	488	114	132	108
	retention	0.88	0.88	0.88	0.85	0.87
	success rate	0.72	0.75	0.73	0.67	0.69

Food Science & Nutrition (FSN)	# sections		7	12	13	5
	enrollment		186	235	254	87
	retention		0.87	0.81	0.87	0.86
	success rate		0.67	0.69	0.76	0.75

Human Services (HUSV)	# sections	24	22	27	15	14
	enrollment	364	288	459	312	267
	retention	0.85	0.92	0.88	0.86	0.88
	success rate	0.70	0.71	0.68	0.71	0.73

Business - BBU

Accounting (ACCT)	# sections	17	17	15	14	12	226
	enrollment	375	433	389	368	390	0.92
	retention	0.79	0.79	0.85	0.77	0.84	0.81
	success rate	0.58	0.58	0.60	0.56	0.61	

Retention and Success Rates by Discipline

Discipline		Fall 2007	Fall 2008	Fall 2009	Fall 2010	Fall 2011	Fall 2012
Business (BUS)	# sections	39	37	33	26	19	291
	enrollment	766	968	869	838	693	0.87
	retention	0.83	0.89	0.83	0.83	0.88	0.68
	success rate	0.65	0.72	0.69	0.60	0.59	
Business Information Systems (CBIS)	# sections	33	23	24	26	14	13
	enrollment	453	461	495	449	386	369
	retention	0.85	0.81	0.80	0.76	0.76	0.80
	success rate	0.53	0.53	0.53	0.51	0.50	0.67
Business Office Technology (CBOT)	# sections	42	21	21	20	8	19
	enrollment	478	470	578	435	256	664
	retention	0.74	0.75	0.72	0.75	0.82	0.79
	success rate	0.51	0.54	0.50	0.51	0.60	0.61
Cooperative Work Experience (CWE)	# sections	15	14	9	6	6	17
	enrollment	42	44	79	76	83	391
	retention	0.81	0.95	0.75	0.84	0.87	0.80
	success rate	0.57	0.55	0.57	0.74	0.75	0.58
Entrepreneurship (ENTR)	# sections					3	11
	enrollment					76	351
	retention					0.83	0.84
	success rate					0.42	0.65
Paralegal (PLGL)	# sections					4	5
	enrollment					129	85
	retention					0.76	0.79
	success rate					0.61	0.59
Real Estate (RE)	# sections	5	2	1	1	1	2
	enrollment	107	25	23	29	28	57
	retention	0.89	0.92	0.96	0.90	0.86	0.96
	success rate	0.57	0.88	0.70	0.59	0.61	0.77
Cosmetology - BCS							
Cosmetology (COS)	# sections	26	31	27	18	16	82
	enrollment	271	403	360	324	187	0.8
	retention	0.96	0.95	0.96	0.93	0.96	0.70
	success rate	0.88	0.86	0.66	0.84	0.88	

Retention and Success Rates by Discipline

Discipline	Fall 2007	Fall 2008	Fall 2009	Fall 2010	Fall 2011	Fall 2012
------------	-----------	-----------	-----------	-----------	-----------	-----------

Counseling - BCO

Leadership (LDER)	# sections	2	2	2	2	2
	enrollment	19	23	43	29	35
	retention	0.79	0.96	0.93	0.86	0.94
	success rate	0.63	0.70	0.72	0.83	0.86

Personal Development (PD)	# sections	17	16	13	16	15	91
	enrollment	393	473	409	496	480	0.89
	retention	0.82	0.86	0.87	0.86	0.86	0.87
	success rate	0.55	0.63	0.64	0.62	0.60	

English - BLA

English (ENGL)	# sections	99	88	78	82	71	35
	enrollment	2316	2378	2208	2434	2214	0.83
	retention	0.84	0.87	0.87	0.82	0.83	0.80
	success rate	0.61	0.66	0.64	0.61	0.63	

Reading (READ)	# sections	6	6	6	8	6	427
	enrollment	141	122	140	164	135	0.88
	retention	0.84	0.92	0.79	0.80	0.84	0.67
	success rate	0.48	0.53	0.66	0.66	0.59	

Fine Arts - BFA

Art (ART)	# sections	50	53	46	49	47	2155
	enrollment	878	1017	1010	1058	970	0.85
	retention	0.86	0.90	0.91	0.90	0.91	0.67
	success rate	0.71	0.72	0.75	0.74	0.74	

Dance (DANC)	# sections	40	35	23	23	18	143
	enrollment	753	711	516	615	520	0.9
	retention	0.92	0.92	0.94	0.86	0.91	0.55
	success rate	0.74	0.74	0.82	0.74	0.80	

Drama (DRMA)	# sections	22	16	15	18	16	48
	enrollment	393	392	436	475	490	940
	retention	0.99	0.99	0.96	0.95	0.97	0.90
	success rate	0.95	0.96	0.91	0.90	0.96	0.77

Film (FILM)	# sections	31	22	21	22	20	18
	enrollment	467	473	370	401	385	439
	retention	0.91	0.93	0.92	0.86	0.90	0.91
	success rate	0.74	0.74	0.72	0.71	0.78	0.81

Retention and Success Rates by Discipline

Discipline		Fall 2007	Fall 2008	Fall 2009	Fall 2010	Fall 2011	Fall 2012
Graphics (GRPH)	# sections	5	10	4	7	9	18
	enrollment	104	164	71	138	159	505
	retention	0.93	0.91	0.97	0.88	0.87	0.95
	success rate	0.71	0.75	0.79	0.80	0.79	0.90
Multimedia Arts & Communicatio (MMAC)	# sections	3	11	6	8	6	22
	enrollment	52	69	67	105	87	387
	retention	0.88	0.97	0.90	0.86	0.98	0.85
	success rate	0.77	0.84	0.78	0.79	0.84	0.64
Music (MUS)	# sections	38	40	29	40	29	6
	enrollment	457	567	653	653	582	144
	retention	0.87	0.83	0.86	0.80	0.79	0.90
	success rate	0.70	0.65	0.58	0.59	0.62	0.86
Photography (PHTO)	# sections	19	17	15	9	14	
	enrollment	239	210	196	137	183	
	retention	0.87	0.93	0.90	0.91	0.93	
	success rate	0.77	0.82	0.86	0.82	0.90	
Health Sciences - BHS							
Dental Assisting (DA)	# sections	6	7	6	6	6	70
	enrollment	86	128	145	154	149	0.99
	retention	0.95	0.99	0.99	1.00	0.92	0.86
	success rate	0.90	0.89	0.90	0.99	0.85	
Medical Assisting (MA)	# sections	19	10	8	6	4	546
	enrollment	281	209	195	168	123	0.86
	retention	0.90	0.88	0.93	0.95	0.90	0.67
	success rate	0.79	0.73	0.77	0.93	0.90	
Nursing (NURS)	# sections	18	19	16	16	16	185
	enrollment	545	627	484	461	478	0.93
	retention	0.98	1.00	0.97	0.98	0.97	0.91
	success rate	0.97	0.99	0.96	0.97	0.96	
Industrial Technology - BIT							
Apprenticeship Training (APRN)	# sections	5	5	5	5	5	100
	enrollment	78	73	63	57	55	0.96
	retention	1.00	0.99	1.00	1.00	0.96	0.96
	success rate	0.94	0.95	0.92	0.96	0.89	

Retention and Success Rates by Discipline

Discipline		Fall 2007	Fall 2008	Fall 2009	Fall 2010	Fall 2011	Fall 2012
Architecture (ARCH)	# sections	8	6	5	5	4	123
	enrollment	120	98	94	85	77	0.94
	retention	0.86	0.92	0.94	0.80	0.82	0.93
	success rate	0.73	0.76	0.79	0.69	0.64	
Auto Body (AB)	# sections	7	6	7	13	11	456
	enrollment	90	83	89	133	120	0.98
	retention	0.86	0.90	0.90	0.93	0.90	0.97
	success rate	0.72	0.88	0.83	0.79	0.70	
Automotive Technology (AT)	# sections	10	11	15	12	12	5
	enrollment	213	208	253	276	258	49
	retention	0.79	0.83	0.87	0.86	0.88	1.00
	success rate	0.71	0.73	0.81	0.76	0.82	0.92
Computer Electronics (CEL)	# sections		2	3	3	4	5
	enrollment		7	24	24	77	66
	retention		1.00	0.96	1.00	0.82	0.83
	success rate		1.00	0.75	0.75	0.64	0.68
Computer Science (CS)	# sections				4	11	11
	enrollment				50	120	125
	retention				0.94	0.90	0.92
	success rate				0.76	0.70	0.74
Electronics (EL)	# sections	19	19	12	4	5	11
	enrollment	97	179	106	35	60	266
	retention	0.88	0.93	0.88	0.63	0.80	0.91
	success rate	0.51	0.66	0.71	0.51	0.65	0.82
Engineering Technology (ET)	# sections	2	4	2	2	2	
	enrollment	35	27	49	48	49	
	retention	0.91	0.93	0.94	0.90	0.94	
	success rate	0.80	0.63	0.80	0.85	0.86	
Machine Technology (MT)	# sections	4	2	2	5	5	
	enrollment	25	16	22	90	94	
	retention	0.92	1.00	0.82	0.83	0.89	
	success rate	0.84	0.88	0.77	0.77	0.78	
Welding Technology (WLDT)	# sections	16	12	9	11	9	5
	enrollment	140	134	144	191	147	68
	retention	0.81	0.96	0.91	0.93	0.87	0.90
	success rate	0.74	0.81	0.80	0.80	0.75	0.68

Source: CCCC MIS data

<https://misweb.cccco.edu/dataondemand/>

Key Performance Indicators, 11-9

Retention and Success Rates by Discipline

Discipline		Fall 2007	Fall 2008	Fall 2009	Fall 2010	Fall 2011	Fall 2012
Kinesiology, Rec & Athletics - BPE							
Athletic Training (ATH)	# sections			1	1	1	39
	enrollment			33	36	35	0.95
	retention			0.91	0.92	0.80	0.85
	success rate			0.85	0.78	0.66	
Health Education (HED)	# sections	16	15	16	17	18	
	enrollment	681	641	714	809	827	
	retention	0.92	0.93	0.94	0.90	0.93	
	success rate	0.75	0.78	0.75	0.73	0.78	
Intercollegiate Athletics (PEIA)	# sections	8	7	8	8	7	
	enrollment	155	188	201	184	171	
	retention	0.99	0.96	0.98	0.90	0.96	
	success rate	0.96	0.95	0.96	0.88	0.94	
Physical Education (PE)	# sections	53	46	43	29	25	
	enrollment	1383	1427	1447	1154	1095	
	retention	0.88	0.89	0.89	0.84	0.94	
	success rate	0.64	0.63	0.59	0.60	0.67	
Recreation (REC)	# sections			3	4	4	
	enrollment			115	135	158	
	retention			0.92	0.92	0.94	
	success rate			0.90	0.88	0.85	
Languages and Communication - BLC							
American Sign Language (ASL)	# sections	2	2	1	3	3	
	enrollment	56	59	37	81	64	
	retention	0.89	0.86	0.89	0.86	0.88	
	success rate	0.68	0.61	0.76	0.59	0.73	
English as a Second Language (ESL)	# sections	26	21	17	16	12	
	enrollment	355	260	239	225	161	
	retention	0.93	0.90	0.94	0.91	0.93	
	success rate	0.77	0.70	0.81	0.74	0.78	
French (FRCH)	# sections	3	2	1	1	1	
	enrollment	46	43	27	31	34	
	retention	0.74	0.79	0.93	0.81	0.85	
	success rate	0.67	0.67	0.81	0.68	0.74	

Retention and Success Rates by Discipline

Discipline		Fall 2007	Fall 2008	Fall 2009	Fall 2010	Fall 2011	Fall 2012
Interdisciplinary Studies (IDST)	# sections	2					
	enrollment	30					
	retention	0.87					
	success rate	0.63					
Italian (ITAL)	# sections	6	3	2	2	5	
	enrollment	83	66	52	69	85	
	retention	0.64	0.56	0.58	0.42	0.73	
	success rate	0.45	0.35	0.52	0.32	0.60	
Latin (LATN)	# sections			1	1		
	enrollment			20	21		
	retention			1.00	0.90		
	success rate			0.95	0.86		
Spanish (SPAN)	# sections	15	12	14	13	12	
	enrollment	339	311	354	359	309	
	retention	0.72	0.83	0.87	0.79	0.85	
	success rate	0.61	0.67	0.69	0.64	0.65	
Speech Communication (SPCH)	# sections	27	28	26	28	27	
	enrollment	597	680	666	805	750	
	retention	0.88	0.91	0.91	0.90	0.90	
	success rate	0.77	0.81	0.79	0.78	0.77	
LAP - CLA							
Learning Skills (LS)	# sections	4	5	2	3	3	
	enrollment	70	91	47	28	42	
	retention	0.83	0.91	0.87	0.89	0.98	
	success rate	0.73	0.73	0.74	0.79	0.86	
Life & Physical Sciences - BLP							
Agribusiness (AG)	# sections	14	14	9	14	11	
	enrollment	139	186	195	300	280	
	retention	0.88	0.95	0.97	0.83	0.88	
	success rate	0.76	0.80	0.85	0.75	0.72	
Astronomy (ASTR)	# sections	5	3	3	3	3	
	enrollment	163	182	261	243	271	
	retention	0.81	0.94	0.87	0.89	0.88	
	success rate	0.68	0.85	0.64	0.68	0.62	

Retention and Success Rates by Discipline

Discipline		Fall 2007	Fall 2008	Fall 2009	Fall 2010	Fall 2011	Fall 2012
Biology (BIOL)	# sections	30	32	34	33	28	
	enrollment	710	761	843	969	790	
	retention	0.80	0.81	0.83	0.79	0.81	
	success rate	0.67	0.68	0.67	0.63	0.67	
Chemistry (CHEM)	# sections	16	14	13	14	13	
	enrollment	329	340	341	422	380	
	retention	0.87	0.89	0.90	0.87	0.87	
	success rate	0.72	0.67	0.68	0.68	0.72	
Environmental Studies (ENVS)	# sections	4	3	2	2		
	enrollment	55	60	32	33		
	retention	0.84	0.78	0.97	0.94		
	success rate	0.69	0.58	0.81	0.85		
Geology (GEOL)	# sections	4	3	2	3	3	
	enrollment	70	56	60	71	88	
	retention	0.76	0.93	0.87	0.80	0.88	
	success rate	0.66	0.71	0.72	0.68	0.69	
Physical Science (PHSC)	# sections	4	2	3	2	1	
	enrollment	50	20	62	51	27	
	retention	0.96	0.95	1.00	0.92	0.89	
	success rate	0.90	0.70	0.94	0.82	0.74	
Physics (PHYS)	# sections	9	8	7	8	7	
	enrollment	149	150	171	198	197	
	retention	0.89	0.85	0.85	0.82	0.76	
	success rate	0.72	0.69	0.70	0.66	0.63	
LRC - Library - BLR							
Library Skills (LBRY)	# sections	1	1	1	1	1	
	enrollment	21	22	14	24	22	
	retention	0.86	0.64	0.86	0.58	0.91	
	success rate	0.52	0.55	0.50	0.54	0.73	
Mathematical Sciences - BMS							
Computer Science (CS)	# sections	19	12	16	6	6	
	enrollment	203	202	259	213	220	
	retention	0.83	0.87	0.88	0.89	0.85	
	success rate	0.61	0.64	0.75	0.78	0.64	

Retention and Success Rates by Discipline

Discipline		Fall 2007	Fall 2008	Fall 2009	Fall 2010	Fall 2011	Fall 2012
Engineering (ENGR)	# sections	6	6	5	5	6	
	enrollment	100	114	121	131	159	
	retention	0.85	0.91	0.90	0.90	0.85	
	success rate	0.80	0.76	0.73	0.73	0.81	
Mathematics (MATH)	# sections	105	100	93	93	86	
	enrollment	2678	2807	2753	2963	2788	
	retention	0.82	0.86	0.86	0.83	0.85	
	success rate	0.61	0.63	0.61	0.60	0.64	
Public Safety - BFS							
Emergency Medical Services (EMS)	# sections	29	20	17	21	20	
	enrollment	487	436	455	506	465	
	retention	0.94	0.97	0.95	0.88	0.91	
	success rate	0.77	0.80	0.74	0.74	0.73	
Environmental Technology (ENVT)	# sections	17	8	6	6	15	
	enrollment	232	222	176	153	365	
	retention	0.99	1.00	1.00	0.97	1.00	
	success rate	0.91	0.94	0.95	0.94	0.99	
Fire Technology (FT)	# sections	21	25	21	28	27	
	enrollment	924	1164	1126	1174	832	
	retention	0.91	0.92	0.89	0.86	0.90	
	success rate	0.78	0.76	0.69	0.67	0.77	
Law Enforcement (LE)	# sections	34	31	18	56	26	
	enrollment	570	473	280	774	387	
	retention	0.98	0.99	0.92	0.97	0.98	
	success rate	0.96	0.98	0.90	0.96	0.96	
Wildland Fire Technology (WFT)	# sections	3	6	2	3		
	enrollment	21	52	32	52		
	retention	0.81	0.92	0.81	0.87		
	success rate	0.57	0.79	0.44	0.35		
Wildland Fire Technology Opera (WFTO)	# sections	5	4	6	3	2	
	enrollment	161	76	139	85	30	
	retention	1.00	1.00	1.00	1.00	1.00	
	success rate	1.00	1.00	1.00	1.00	1.00	

Retention and Success Rates by Discipline

Discipline	Fall 2007	Fall 2008	Fall 2009	Fall 2010	Fall 2011	Fall 2012
------------	-----------	-----------	-----------	-----------	-----------	-----------

Social & Behavioral Sciences - BSS

Anthropology (ANTH)	# sections	18	14	14	19	17
	enrollment	426	518	584	822	755
	retention	0.78	0.77	0.83	0.73	0.68
	success rate	0.58	0.50	0.63	0.50	0.44

Economics (ECON)	# sections	16	12	7	19	16
	enrollment	397	362	247	577	511
	retention	0.87	0.88	0.90	0.82	0.83
	success rate	0.60	0.60	0.72	0.59	0.57

Geography (GEOG)	# sections	7	7	6	8	4
	enrollment	194	249	225	284	160
	retention	0.85	0.90	0.81	0.86	0.89
	success rate	0.60	0.80	0.55	0.55	0.73

Global Studies (GBST)	# sections				1	
	enrollment				33	
	retention				0.91	
	success rate				0.55	

History (HIST)	# sections	46	35	44	41	35
	enrollment	1448	1423	1941	1812	1620
	retention	0.87	0.87	0.90	0.87	0.86
	success rate	0.61	0.58	0.57	0.59	0.59

Humanities (HUM)	# sections		8		2	2
	enrollment		133		82	90
	retention		0.95		0.73	0.82
	success rate		0.74		0.46	0.56

International Studies (IS)	# sections		1	3		
	enrollment		1	45		
	retention		1.00	0.89		
	success rate		0.00	0.60		

Philosophy (PHIL)	# sections	18	19	14	16	11
	enrollment	502	612	580	599	402
	retention	0.88	0.90	0.90	0.88	0.87
	success rate	0.75	0.70	0.69	0.71	0.72

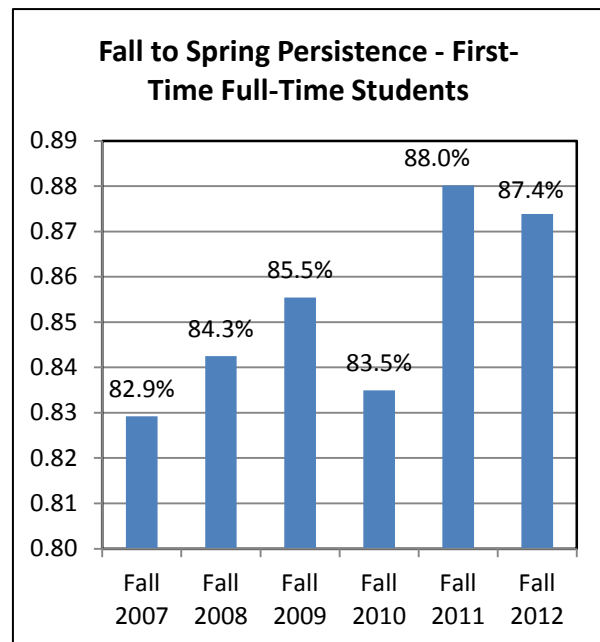
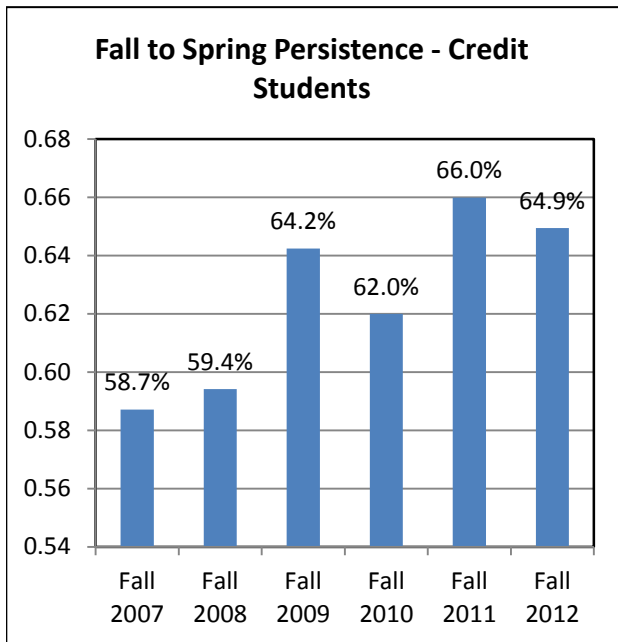
Political Science (POLS)	# sections	18	15	12	14	13
	enrollment	489	509	488	576	537
	retention	0.85	0.88	0.90	0.85	0.90
	success rate	0.71	0.69	0.70	0.71	0.74

Retention and Success Rates by Discipline

Discipline		Fall 2007	Fall 2008	Fall 2009	Fall 2010	Fall 2011	Fall 2012
Psychology (PSY)	# sections	38	40	30	40	37	
	enrollment	1301	1404	1042	1409	1350	
	retention	0.89	0.85	0.89	0.85	0.84	
	success rate	0.71	0.54	0.63	0.59	0.53	
Sociology (SOC)	# sections	21	22	14	17	16	
	enrollment	595	654	530	619	563	
	retention	0.79	0.85	0.85	0.77	0.76	
	success rate	0.58	0.57	0.61	0.56	0.57	

Fall to Spring Persistence

Fall to Spring Persistence is measure of academic performance. Persistence in this report measures the percentage of students enrolled in the fall semester that return in the subsequent spring.



Fall 2012 to Spring 2013 Persistence

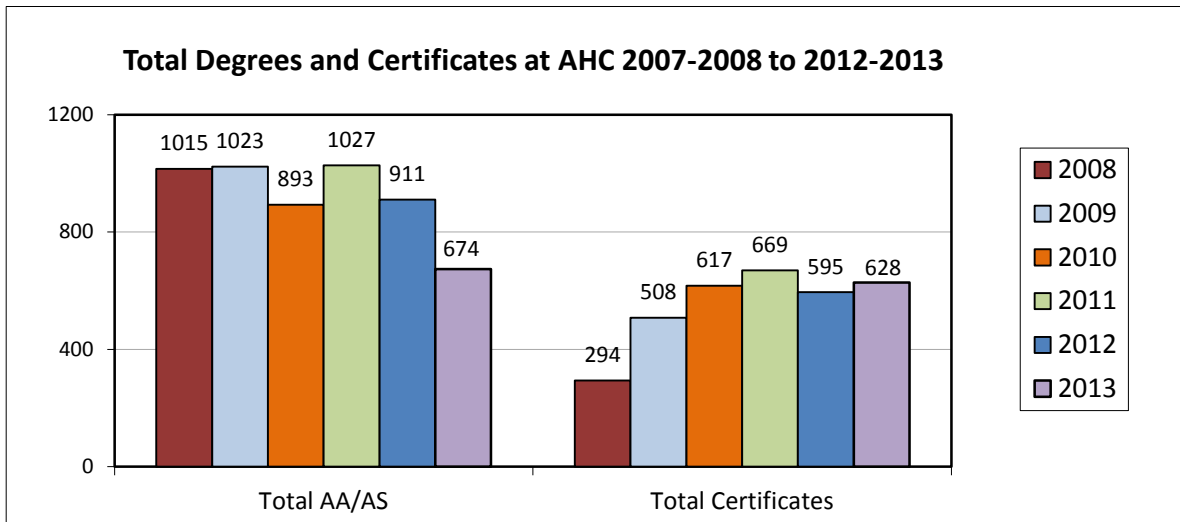
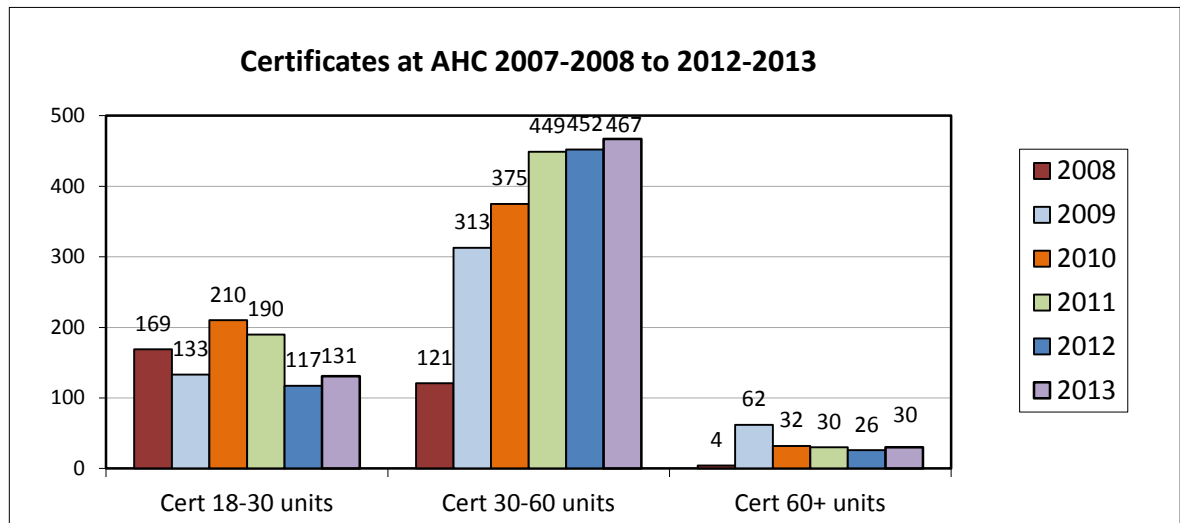
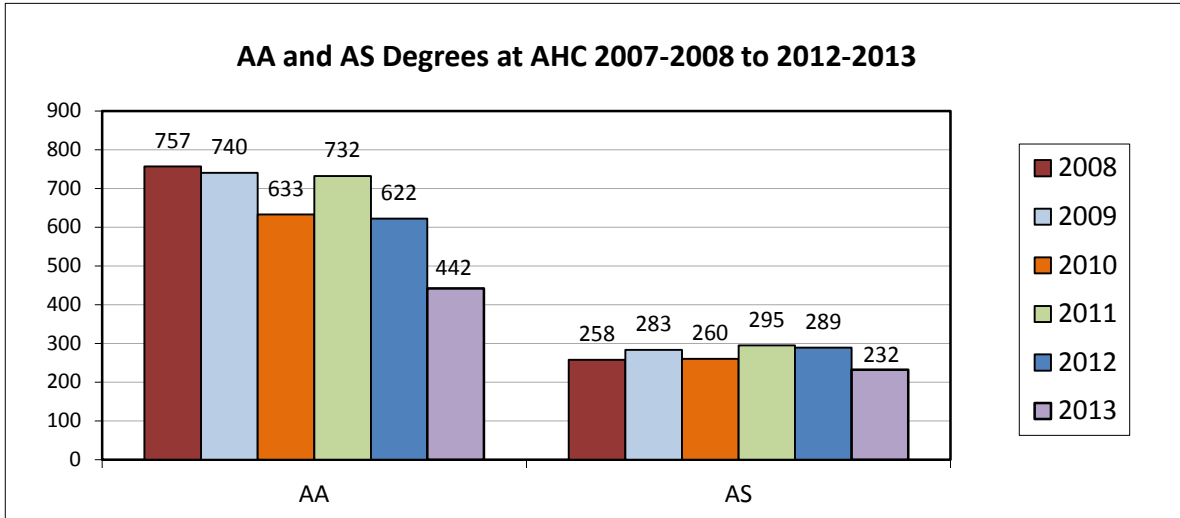
Gender	Credit Students	First-Time Full-Time Students
Female	67.8%	89.9%
Male	61.9%	84.8%
Total	64.9%	87.4%

Students at different stages in their career persist at different rates. First-time full-time students persist at much higher rates than general student body. (Full-time students are those enrolled in 12 units or more in the fall semester.) Also, females historically persist at higher rates than males.

Ethnicity	Credit Students	First-Time Full-Time Students
Afr.-American	61.5%	65.4%
Am. Indian	53.4%	66.7%
Asian	69.7%	93.8%
Hispanic	69.7%	89.8%
Multi-Ethn.	67.2%	87.5%
Pacific Isl.	55.3%	40.0%
Unknown	25.0%	N/A
White	58.9%	87.5%
Total	64.9%	87.4%

Educational Goal	Credit Students	First-Time Full-Time Students
Transfer	74.3%	88.3%
Degree/Cert	62.4%	86.2%
Career	39.5%	95.2%
Basic Skills	47.5%	50.0%
Other	48.7%	82.8%
Total	64.9%	87.4%

Degrees and Certificates at AHC



Degrees and Certificates at AHC

AA Degrees	2007 - 2008	2008 - 2009	2009 - 2010	2010 - 2011	2011 - 2012	2012 - 2013
Agribusiness				2	2	
Art	3		1	1	1	2
Biology	5	2	6	7	14	8
Business Administration	15	22	23	29	29	24
Chemistry	6	6	5	16	9	10
Computer Science			2	4	10	7
Conv Degree/Cert Awarded						
Culinology				1	4	
Dance	1	1		4	2	2
Engineering	8	7	4	15	10	9
English	3	3	5	6	2	1
Environmental Studies	1					
Global Studies						1
International Studies	1		1	1		
Liberal Arts	439	453	415	482	440	319
Liberal Studies			3	1	3	
Mathematics	7	13	9	27	19	15
Music	2		1	1	3	2
Physical Education	2	1	4		1	3
Physics	6	5	5	18	9	11
Psychology	9	20	22	21	21	16
Social Science	7	3	11	16	8	5
Spanish	3	2	4	1	4	
Speech Communication	1	1	4	3	9	1
Transfer Studies	238	201	108	76	22	6
Total	757	740	633	732	622	442

Degrees and Certificates at AHC

AS Degrees	2007 - 2008	2008 - 2009	2009 - 2010	2010 - 2011	2011 - 2012	2012 - 2013
Accounting	8	6	6	13	12	9
Administration Of Justice	27	35	34	32	36	28
Agribusiness	1	4	2	2	4	1
Applied Design Media			1	3		2
Applied Design/Media	5	11	10	10	13	7
Architectural Drafting	2	3	4	4	4	
Auto Body Technology		3	2		1	3
Automotive Technology	4	4	9	8	5	5
Business	20	10	15	13	19	17
Comp Bus Info Systms (CBIS)	2	1		3	1	1
Comp Bus Office Tech (CBOT)	17	14	10	22	9	6
Conv Degree/Cert Awarded	15	11	1			
Cosmetology	3	2	3	2	5	1
Dental Assisting	6	13	7	9	6	7
Early Childhood Studies	23	31	15	24	21	17
Electronics Technology	3	4	3	2	2	5
Emergency Medical Services	2	4		4	1	3
Engineering Technology			1	2		
Entrepreneurship				1		
Environmental Technology						
Family and Consumer Sciences	1	1	3	1	4	1
Film and Video Production				4		2
Fire Technology	39	42	51	51	54	29
Graphic Communication			1			
Human Services	10	4	11	11	11	12
Machine Technology	1					2
Medical Assisting			3	5	1	
Nursing	69	76	66	63	64	63
Paralegal Studies						3
Pharmacy Technology			1			
Recreation Management				1	14	5
Welding Technology		3	1	4	2	3
Wildland Firefighting		1		1		
Total	258	283	260	295	289	232

Degrees and Certificates at AHC

Certificates 60+ units	2007 - 2008	2008 - 2009	2009 - 2010	2010 - 2011	2011 - 2012	2012 - 2013
Drama	4	62	32	30	26	30
Total	4	62	32	30	26	30

Certificates 30-<60 units	2007 - 2008	2008 - 2009	2009 - 2010	2010 - 2011	2011 - 2012	2012 - 2013
Automotive Technology				9	2	5
Comp Bus Info Systms (CBIS)		2				
Conv Degree/Cert Awarded						
CSU Gen Ed Cert		109	177			
Culinary Arts and Management				1		
Dance	1	1			1	
Dental Assisting				29	27	24
Early Childhood Studies	4	5	9	5	8	6
Electronics Technology	1	1				
Film and Video Production			1			
Fire Technology	32	57	41	40	25	25
Human Services	12	10	4	18	16	5
IGETC Gen Ed Cert		52	77			
Medical Assisting				20	26	
Nursing	71	76	66	1	1	30
Transfer Studies				324	346	372
Welding Technology				2		
Total	121	313	375	449	452	467

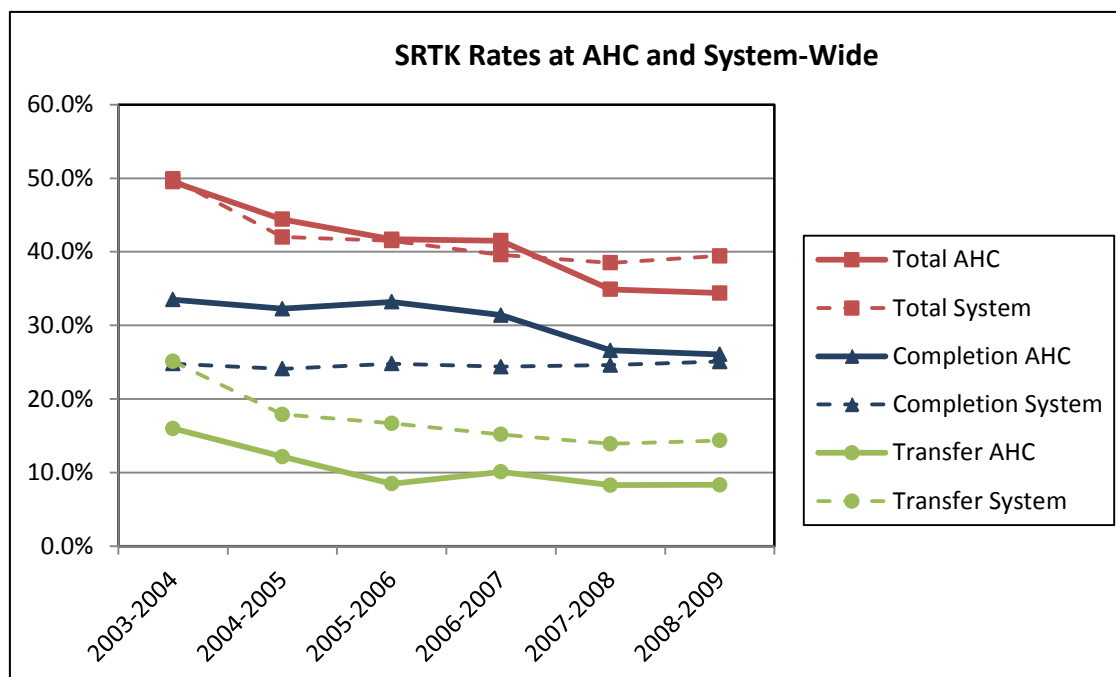
Degrees and Certificates at AHC

Certificates 18-<30 units	2007 - 2008	2008 - 2009	2009 - 2010	2010 - 2011	2011 - 2012	2012 - 2013
Accounting	3	1	2	2		
Agribusiness						
Applied Design/Media						
Auto Body Technology	1	2	2	3	3	6
Automotive Technology				3		
Business	2	1	3	1	2	1
Comp Bus Info Systms (CBIS)					1	
Comp Bus Office Tech (CBOT)	2	7	6	7	4	1
Conv Degree/Cert Awarded	11	10	1			
Cosmetology	101	74	139	124	57	31
Culinary Arts & Management						1
Culinary Arts and Management		1	3	1	3	1
Dental Assisting	18	21	25			
Early Childhood Studies	21	7	5			
Electronics Technology			1	1		3
Environmental Technology	1					
Family and Consumer Sciences	3		1	1	2	
Human Services	4	3	5	9	4	4
Law Enforcement					33	43
Machine Technology						2
Med Assisting-Administrative			3			1
Med Assisting-Clinical			8	4	1	
Medical Assisting				21	2	32
Paralegal Studies						2
Recreation Management					1	2
Sound Technology	2	2	1	2	1	
Transfer Studies		3	4	2		1
Welding Technology		1	1	9	3	
Total	169	133	210	190	117	131

Student Right-to-Know Completion and Transfer Rates

Student Right-to-Know (SRTK) refers to a federally mandated public disclosure of a college's completion and transfer rate.

	Completion		Transfer		Total	
	AHC	System	AHC	System	AHC	System
2003-2004	33.5%	24.8%	16.0%	25.1%	49.5%	49.9%
2004-2005	32.3%	24.1%	12.2%	17.9%	44.4%	42.0%
2005-2006	33.2%	24.8%	8.5%	16.7%	41.7%	41.5%
2006-2007	31.4%	24.4%	10.1%	15.2%	41.5%	39.6%
2007-2008	26.6%	24.6%	8.3%	13.9%	34.9%	38.5%
2008-2009	26.1%	25.1%	8.3%	14.4%	34.4%	39.4%



SRTK is a "cohort" study. The SRTK Cohort is a group of students who are first-time freshmen, enrolled full-time and are degree-seeking. These students are identified in a fall term and their outcomes are measured over a period of time. The SRTK Cohort produces two measures. The first measure is the Completion Rate (the total number of students in the cohort who earn either a degree, a certificate, or who successfully completed a two-year-equivalent transfer-preparatory program). The second measure is the Transfer Rate (the total number of cohort non-completers who were identified as having enrolled in another institution). The tracking period of the cohorts is three (3) years, at which time the SRTK rates are calculated and made public.

SRTK has its merits in that it attempts to provide a standardized measure of college effectiveness nationwide. However, in order to fully understand what SRTK rates mean for a college, one should also know its limitations. First, the cohort group can be quite small compared to the entire Community College population, and is therefore not fully representative of all educational activities at a college. Many Community Colleges do not have the primary mission of producing only transferable students. Additionally, **the Federal methodology lowers the Transfer rate for**

Transfers to CSU

Number of Full-Year Transfers to the California State University Allan Hancock College

Years 2003-04 through 2012-13

Academic Year	CSU	
	Number	% Change
2003-04	290	-6.8%
2004-05	326	12.4%
2005-06	297	-8.9%
2006-07	294	-1.0%
2007-08	297	1.0%
2008-09	211	-29.0%
2009-10	228	8%
2010-11	194	-14.9%
2011-12	242	25%
2012-13	256	6%

After a drop in 2008-2009, AHC transfers to the CSU system seemed to slowly recover.

Some of the more popular CSU transfer destinations include Cal Poly, Northridge, and Fresno. Channel Islands has increased its popularity over the last 3 years.

Number of Full-Year Transfers to the California State University California Community Colleges

Years 2002-03 through 2011-12

Academic Year	CSU	
	Number	% Change
2003-04	48,317	-4.8%
2004-05	53,693	11.1%
2005-06	52,640	-2.0%
2006-07	54,379	3.3%
2007-08	54,970	1.1%
2008-09	49,768	-9.5%
2009-10	37,651	-24.3%
2010-11	39,143	4.0%
2011-12	37,911	-3.1%
2012-13	41,215	8.7%

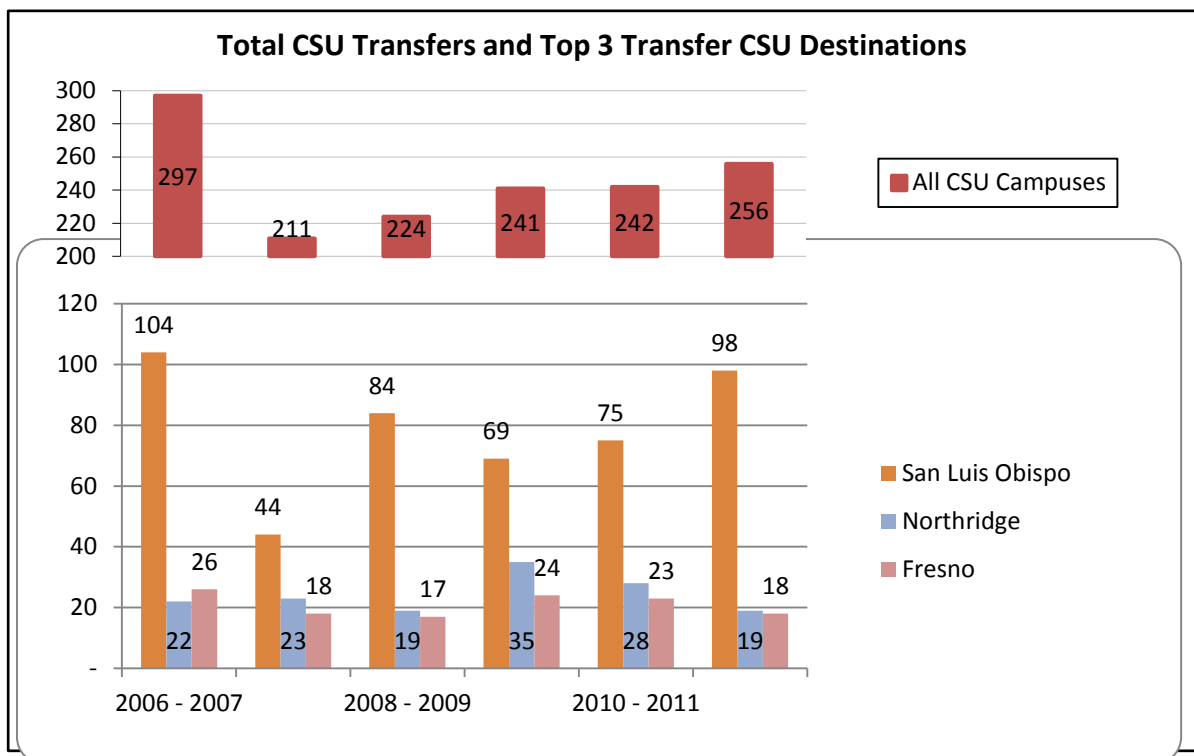
UC transfer data is no longer available as of 2011. The website that provided the data was funded by the State of CA and is no longer in operation. CSU data comes from a website funded by the CSU system.

AHC Historical Transfer Data



Transfers to CSU

CSU Campus Destination	2006 - 2007	2007 - 2008	2008 - 2009	2009 - 2010	2010 - 2011	2011-2012
Bakersfield	10	7	7	7	5	5
Channel Islands	8	5	7	11	15	18
Chico	12	13	11	6	10	12
Dominguez Hills	4	6	3	5	4	3
East Bay	1	6	4	7	6	4
Fresno	26	18	17	24	23	18
Fullerton	11	12	7	6	4	10
Humboldt	8	8	1	5	3	4
Long Beach	24	9	8	15	15	13
Los Angeles	5	5	3	8	6	6
Maritime Academy	-	-	-	-	-	1
Monterey Bay	4	4	7	6	9	6
Northridge	22	23	19	35	28	19
Pomona	3	2	1	2	-	5
Sacramento	3	9	11	9	7	4
San Bernardino	5	1	2	-	-	-
San Diego	27	11	2	5	5	6
San Francisco	10	15	11	7	12	7
San Jose	7	12	11	11	10	14
San Luis Obispo	104	44	84	69	75	98
San Marcos	1	-	5	-	2	-
Sonoma	2	-	1	2	-	1
Stanislaus	-	1	2	1	3	2
Total	297	211	224	241	242	256



Performance and Persistence of AHC Transfer Students in CSU System

2009-10

		Pre-admission GPA
AHC		3.06
Systemwide		3.00

	Enrolled Fall 2009	Continuation Fall 2010		CSU GPA	
		Number	Rate	Number	Average
AHC	219	191	87.2%	191	2.97
Upper Division	216	189	87.5%	189	2.97
Lower Division	3	2	66.7%	2	2.92

Systemwide	35,655	30,481	85.5%	30,171	2.98
Upper Division	34,191	29,348	85.8%	29,065	2.98
Lower Division	1,464	1,133	77.4%	1,106	2.87

2010-11

		Pre-admission GPA
AHC		3.19
Systemwide		3.05

	Enrolled Fall 2010	Continuation Fall 2011		CSU GPA	
		Number	Rate	Number	Average
AHC	194	172	89.0%	171	2.94
Upper Division	188	167	89.0%	166	2.95
Lower Division	6	5	83.0%	5	2.72

Systemwide	39,143	34,425	88.0%	34,121	3.03
Upper Division	38,613	34,020	88.0%	33,725	3.03
Lower Division	530	405	76.0%	396	2.88

2011-12

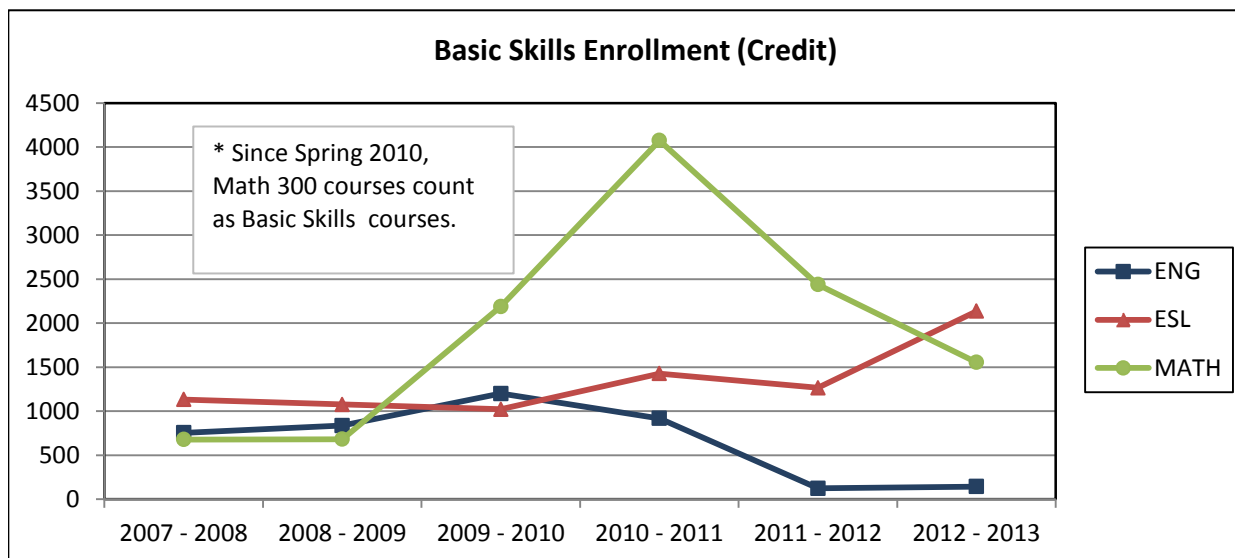
		Pre-admission GPA
AHC		3.13
Systemwide		3.04

	Enrolled Fall 2011	Continuation Fall 2012		CSU GPA	
		Number	Rate	Number	Average
AHC	242	214	88.0%	212	2.99
Upper Division	242	214	88.0%	212	2.99
Lower Division	0	0	0.0%	0	0

Systemwide	37,911	32,986	87.0%	32,624	3.03
Upper Division	37,172	32,384	87.0%	32,030	3.03
Lower Division	739	602	81.0%	594	2.85

Basic Skills Enrollment and Performance Indicators

The mission of the California Community College system includes pre-collegiate basic skills education. Credit and noncredit courses are offered to facilitate transition towards associate and transfer level courses for students lacking requisite skills. The three primary areas of basic skills instruction include English (reading and writing), ESL (English as a second language), and mathematics.

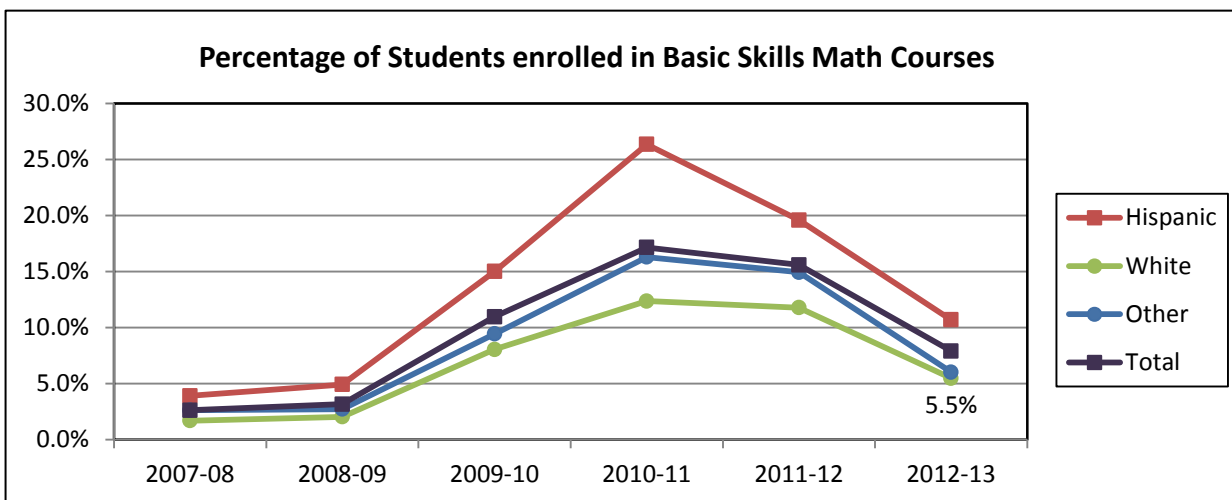
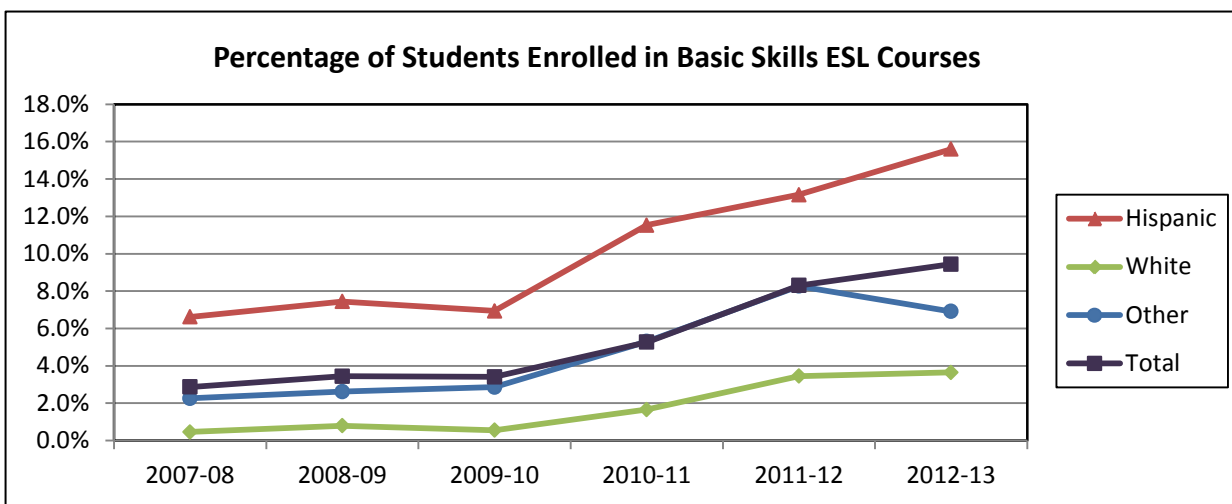
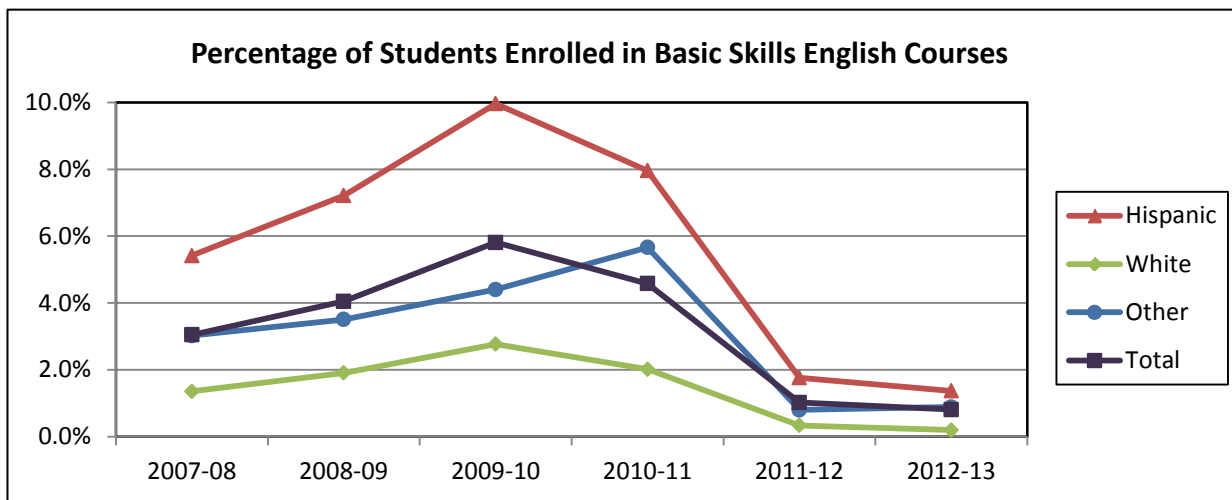


2012-2013 Retention and Success for the 3 Primary Basic Skills Categories (English, ESL, and Math)

Gender	English		ESL		Math	
	Retention	Success	Retention	Success	Retention	Success
Female	86.2%	57.5%	85.1%	61.6%	80.5%	57.1%
Male	89.3%	50.0%	100.0%	100.0%	84.7%	55.8%
Total	87.4%	72.0%	86.5%	67.7%	82.2%	93.1%

Ethnicity	English		ESL		Math	
	Retention Rate	Success Rate	Retention Rate	Success Rate	Retention Rate	Success Rate
Afr.-Amer.	83.3%	33.3%	75.0%	53.1%	76.5%	41.2%
Am. Indian	100.0%	0.0%	80.0%	50.0%	84.6%	76.9%
Asian	100.0%	85.7%	92.3%	75.0%	83.3%	66.7%
Hispanic	88.1%	53.2%	87.1%	68.2%	81.8%	56.0%
Multi-Ethn.	80.0%	80.0%	78.6%	66.7%	82.0%	52.0%
Pacific Isl.			100.0%	83.3%	50.0%	50.0%
Unknown			100.0%	100.0%		
White	80.0%	53.3%	83.6%	64.5%	84.0%	58.9%
Total	87.4%	54.5%	86.5%	67.7%	82.2%	56.6%

Basic Skills Enrollment and Performance Indicators



Note that since Spring 2010, Math 300 courses count as Basic Skills which explains the sharp increase in enrolled students.