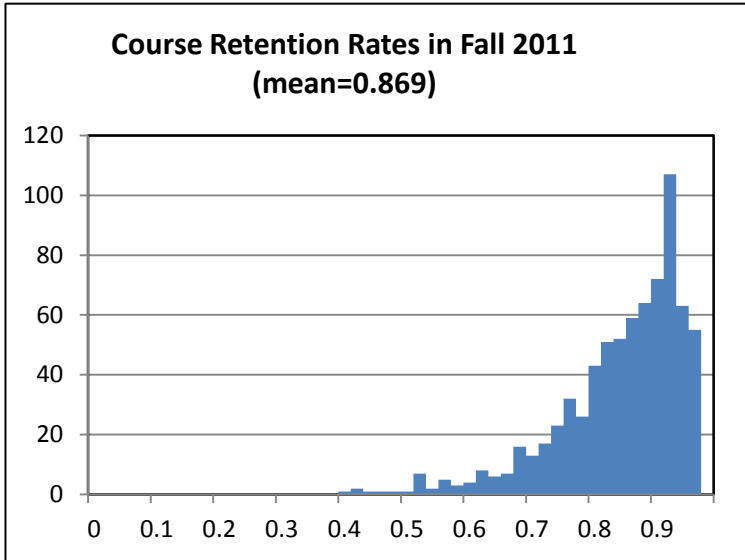


11. Key Performance Indicators

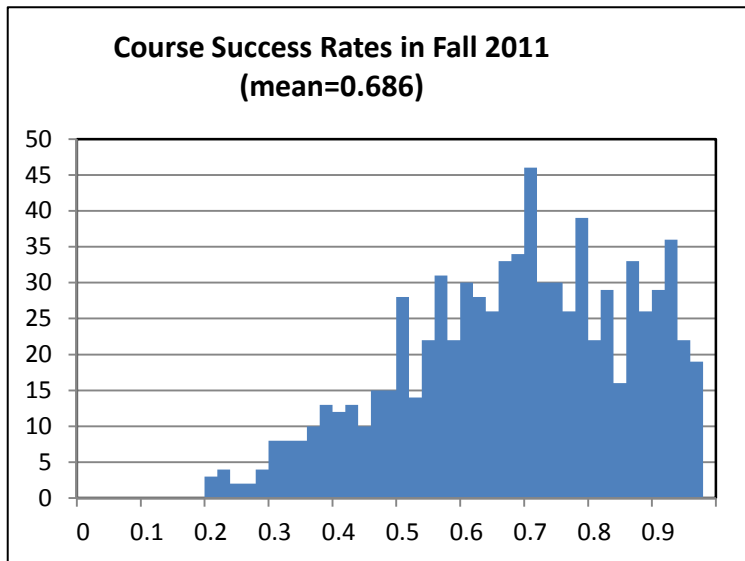
<i>Topic</i>	<i>Page</i>
<i>Retention and Success Rates</i>	<i>11-2</i>
<i>Statewide vs AHC Comparison of Retention and Success Rates</i>	<i>11-3</i>
<i>Retention and Success Rates by Discipline</i>	<i>11-5</i>
<i>Fall to Spring Persistence</i>	<i>11-16</i>
<i>Degrees and Certificates</i>	<i>11-17</i>
<i>Student Right-to-Know Completion and Transfer Rates</i>	<i>11-21</i>
<i>Transfers to CSU</i>	<i>11-22</i>
<i>Performance and Persistence of Transfer Students to AHC</i>	<i>11-24</i>
<i>Basic Skills Enrollment and Performance Indicators</i>	<i>11-25</i>

Retention and Success

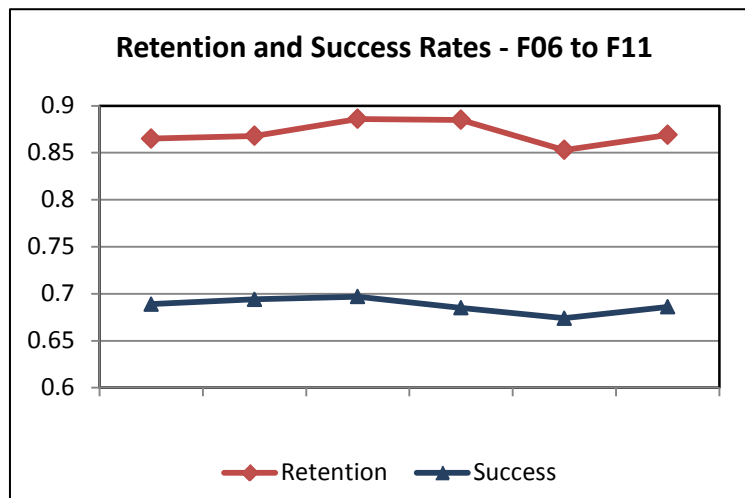
Retention and success rates are a measure of academic performance.



Retention rates are the sum of course enrollments receiving an official end of term letter grade of A, B, C, D, F*, CR, NC, I*, P, or NP divided by course enrollment. Courses with an enrollment of 10 or less were excluded in the histogram.



Successful course completion rates are the sum of course enrollments receiving an official end of term letter grade of A, B, C, CR, or P, divided by course enrollment. Courses with an enrollment of 10 or less were excluded in the histogram.



Term	Enrollment
Fall 2006	27137
Fall 2007	28467
Fall 2008	30223
Fall 2009	29912
Fall 2010	32335
Fall 2011	29217

Statewide vs AHC Comparison of Retention and Success Rates

(State website not updated for Fall 2011 as of 1/2013)

Retention Rates

		Statewide		AHC		Difference	
Gender		Fall 2009	Fall 2010	Fall 2009	Fall 2010	Fall 2009	Fall 2010
Female	Enrollment	2322024	2270560	16126	17099		
	Retention	85%	85%	89%	85%	4.2%	0.3%
Male	Enrollment	2002849	1988092	13583	15043		
	Retention	85%	85%	88%	86%	3.3%	0.6%
TOTAL	Enrollment	4324873	4258652	29912	32335		
	Retention	85%	85%	89%	85%	3.8%	0.4%

		Statewide		AHC		Difference	
Ethnicity		Fall 2009	Fall 2010	Fall 2009	Fall 2010	Fall 2009	Fall 2010
African-American	Enrollment	342674	348913	1030	890		
	Retention	79%	79%	87%	83%	7.6%	3.7%
American Indian	Enrollment	33992	28315	281	437		
	Retention	82%	83%	89%	76%	6.5%	-6.5%
Asian	Enrollment	619065	617751	1351	1618		
	Retention	86%	86%	89%	87%	3.1%	0.1%
Hispanic	Enrollment	1354593	1475447	12844	13744		
	Retention	83%	84%	87%	84%	3.6%	0.5%
Multi-Ethnicity	Enrollment	56476	105675	505	388		
	Retention	83%	83%	89%	87%	6.3%	3.6%
Pacific Islander	Enrollment	35301	29309	69	227		
	Retention	82%	82%	97%	82%	14.8%	-0.1%
Unknown	Enrollment	548018	314373	2193	1493		
	Retention	85%	85%	90%	88%	4.5%	2.7%
White	Enrollment	1427135	1417488	11639	13538		
	Retention	86%	86%	90%	86%	3.9%	0.2%
Total	Enrollment	4417254	4337271	29912	32335		
	Retention	84%	85%	89%	85%	4.0%	0.7%

Historically, AHC had higher retention rates than the statewide average. However, the difference in retention rates between AHC and statewide numbers shrank to nearly 0 in Fall 2010. Hopefully, this trend will be reversed in the coming years.

The retention rate measures how well an institution is performing in retaining students in the learning process to completion of the course, regardless of the achievement level of students. A high retention rate may reflect, among other factors, a high level of student satisfaction with the instructional material and the absence of personal problems which interfere with college attendance.

Statewide vs AHC Comparison of Retention and Success Rates

(State website not updated for Fall 2011 as of 1/2013)

Success Rates

		Statewide		AHC		Difference	
Gender		Fall 2009	Fall 2010	Fall 2009	Fall 2010	Fall 2009	Fall 2010
Female	Enrollment	2348637	2290566	16126	17099		
	Success	68%	69%	70%	68%	2.3%	-1.1%
Male	Enrollment	2027778	2006285	13583	15043		
	Success	66%	67%	67%	67%	0.5%	-0.3%
TOTAL	Enrollment	4417254	4337271	29912	32335		
	Success	67%	68%	68%	67%	1.5%	-0.7%

		Statewide		AHC		Difference	
Ethnicity		Fall 2009	Fall 2010	Fall 2009	Fall 2010	Fall 2009	Fall 2010
African-American	Enrollment	342674	348913	1030	890		
	Success	54%	55%	58%	60%	4.0%	5.3%
American Indian	Enrollment	33992	28315	281	437		
	Success	63%	64%	65%	53%	1.9%	-11.6%
Asian	Enrollment	619065	617751	1351	1618		
	Success	73%	74%	73%	72%	-0.2%	-2.2%
Hispanic	Enrollment	1354593	1475447	12844	13744		
	Success	63%	64%	64%	64%	1.6%	-0.8%
Multi-Ethnicity	Enrollment	56476	105675	505	388		
	Success	63%	64%	64%	60%	0.7%	-4.4%
Pacific Islander	Enrollment	35301	29309	69	227		
	Success	62%	63%	67%	64%	4.6%	1.1%
Unknown	Enrollment	548018	314373	2193	1493		
	Success	68%	71%	74%	75%	5.6%	4.3%
White	Enrollment	1427135	1417488	11639	13538		
	Success	71%	73%	73%	71%	1.3%	-1.5%
Total	Enrollment	4417254	4337271	29912	32335		
	Success	67%	68%	68%	67%	1.5%	-0.7%

Historically, AHC success rates were higher than the statewide average across all ethnic, gender, and age groups. However, this trend reversed in Fall 2010.

Retention and Success Rates by Discipline

Discipline		Fall 2006	Fall 2007	Fall 2008	Fall 2009	Fall 2010	Fall 2011
Applied Social Sciences - BAS							
Administration of Justice (AJ)	# sections	11	11	12	12	13	11
	enrollment	269	229	344	407	558	457
	retention	0.91	0.89	0.92	0.89	0.92	0.91
	success rate	0.77	0.80	0.80	0.75	0.78	0.65
Culinary Arts (CA)	# sections				6	7	8
	enrollment				122	127	123
	retention				0.93	0.92	0.86
	success rate				0.72	0.86	0.81
Early Childhood Studies (ECS)	# sections	45	39	45	38	35	33
	enrollment	873	818	920	1013	896	877
	retention	0.93	0.92	0.93	0.91	0.87	0.87
	success rate	0.82	0.78	0.77	0.72	0.73	0.71
Education (EDUC)	# sections	1	1	2	2		
	enrollment	20	18	37	27		
	retention	0.95	1.00	0.89	0.93		
	success rate	0.75	0.89	0.81	0.70		
Family & Consumer Science (FCS)	# sections	22	25	23	5	6	4
	enrollment	347	401	488	114	132	108
	retention	0.88	0.88	0.88	0.88	0.85	0.87
	success rate	0.72	0.72	0.75	0.73	0.67	0.69
Food Science & Nutrition (FSN)	# sections				7	12	13
	enrollment				186	235	254
	retention				0.87	0.81	0.87
	success rate				0.67	0.69	0.76
Human Services (HUSV)	# sections	20	24	22	27	15	14
	enrollment	260	364	288	459	312	267
	retention	0.84	0.85	0.92	0.88	0.86	0.88
	success rate	0.65	0.70	0.71	0.68	0.71	0.73
Business - BBU							
Accounting (ACCT)	# sections	16	17	17	15	14	12
	enrollment	399	375	433	389	368	390
	retention	0.83	0.79	0.79	0.85	0.77	0.84
	success rate	0.54	0.58	0.58	0.60	0.56	0.61

Retention and Success Rates by Discipline

Discipline		Fall 2006	Fall 2007	Fall 2008	Fall 2009	Fall 2010	Fall 2011
Business (BUS)	# sections	35	39	37	33	26	19
	enrollment	780	766	968	869	838	693
	retention	0.84	0.83	0.89	0.83	0.83	0.88
	success rate	0.63	0.65	0.72	0.69	0.60	0.59
Business Information Systems (CBIS)	# sections	30	33	23	24	26	14
	enrollment	450	453	461	495	449	386
	retention	0.81	0.85	0.81	0.80	0.76	0.76
	success rate	0.57	0.53	0.53	0.53	0.51	0.50
Business Office Technology (CBOT)	# sections	47	42	21	21	20	8
	enrollment	488	478	470	578	435	256
	retention	0.75	0.74	0.75	0.72	0.75	0.82
	success rate	0.52	0.51	0.54	0.50	0.51	0.60
Cooperative Work Experience (CWE)	# sections	17	15	14	9	6	6
	enrollment	43	42	44	79	76	83
	retention	0.63	0.81	0.95	0.75	0.84	0.87
	success rate	0.37	0.57	0.55	0.57	0.74	0.75
Entrepreneurship (ENTR)	# sections						3
	enrollment						76
	retention						0.83
	success rate						0.42
Paralegal (PLGL)	# sections						4
	enrollment						129
	retention						0.76
	success rate						0.61
Real Estate (RE)	# sections	8	5	2	1	1	1
	enrollment	161	107	25	23	29	28
	retention	0.84	0.89	0.92	0.96	0.90	0.86
	success rate	0.64	0.57	0.88	0.70	0.59	0.61
Cosmetology - BCS							
Cosmetology (COS)	# sections	32	26	31	27	18	16
	enrollment	405	271	403	360	324	187
	retention	0.97	0.96	0.95	0.96	0.93	0.96
	success rate	0.65	0.88	0.86	0.66	0.84	0.88

Retention and Success Rates by Discipline

Discipline	Fall 2006	Fall 2007	Fall 2008	Fall 2009	Fall 2010	Fall 2011
------------	-----------	-----------	-----------	-----------	-----------	-----------

Counseling - BCO

Leadership (LDER)	# sections	1	2	2	2	2
	enrollment	12	19	23	43	29
	retention	1.00	0.79	0.96	0.93	0.86
	success rate	0.75	0.63	0.70	0.72	0.83

Personal Development (PD)	# sections	16	17	16	13	16
	enrollment	319	393	473	409	496
	retention	0.90	0.82	0.86	0.87	0.86
	success rate	0.64	0.55	0.63	0.64	0.62

English - BLA

English (ENGL)	# sections	94	99	88	78	82
	enrollment	2222	2316	2378	2208	2434
	retention	0.81	0.84	0.87	0.87	0.82
	success rate	0.58	0.61	0.66	0.64	0.61

Reading (READ)	# sections	6	6	6	6	8
	enrollment	120	141	122	140	164
	retention	0.87	0.84	0.92	0.79	0.80
	success rate	0.48	0.48	0.53	0.66	0.66

Fine Arts - BFA

Art (ART)	# sections	46	50	53	46	49
	enrollment	866	878	1017	1010	1058
	retention	0.86	0.86	0.90	0.91	0.90
	success rate	0.72	0.71	0.72	0.75	0.74

Dance (DANC)	# sections	37	40	35	23	23
	enrollment	743	753	711	516	615
	retention	0.88	0.92	0.92	0.94	0.86
	success rate	0.70	0.74	0.74	0.82	0.74

Drama (DRMA)	# sections	26	22	16	15	18
	enrollment	344	393	392	436	475
	retention	0.95	0.99	0.99	0.96	0.95
	success rate	0.90	0.95	0.96	0.91	0.90

Film (FILM)	# sections	20	31	22	21	22
	enrollment	321	467	473	370	401
	retention	0.93	0.91	0.93	0.92	0.86
	success rate	0.81	0.74	0.74	0.72	0.71

Retention and Success Rates by Discipline

Discipline		Fall 2006	Fall 2007	Fall 2008	Fall 2009	Fall 2010	Fall 2011
Graphics (GRPH)	# sections	10	5	10	4	7	9
	enrollment	166	104	164	71	138	159
	retention	0.93	0.93	0.91	0.97	0.88	0.87
	success rate	0.82	0.71	0.75	0.79	0.80	0.79
Multimedia Arts & Communicatio (MMAC)	# sections	5	3	11	6	8	6
	enrollment	56	52	69	67	105	87
	retention	0.96	0.88	0.97	0.90	0.86	0.98
	success rate	0.82	0.77	0.84	0.78	0.79	0.84
Music (MUS)	# sections	38	38	40	29	40	29
	enrollment	515	457	567	653	653	582
	retention	0.85	0.87	0.83	0.86	0.80	0.79
	success rate	0.64	0.70	0.65	0.58	0.59	0.62
Photography (PHTO)	# sections	19	19	17	15	9	14
	enrollment	245	239	210	196	137	183
	retention	0.87	0.87	0.93	0.90	0.91	0.93
	success rate	0.79	0.77	0.82	0.86	0.82	0.90
Health Sciences - BHS							
Dental Assisting (DA)	# sections	6	6	7	6	6	6
	enrollment	96	86	128	145	154	149
	retention	0.97	0.95	0.99	0.99	1.00	0.92
	success rate	0.93	0.90	0.89	0.90	0.99	0.85
Medical Assisting (MA)	# sections	10	19	10	8	6	4
	enrollment	157	281	209	195	168	123
	retention	0.85	0.90	0.88	0.93	0.95	0.90
	success rate	0.82	0.79	0.73	0.77	0.93	0.90
Nursing (NURS)	# sections	18	18	19	16	16	16
	enrollment	469	545	627	484	461	478
	retention	0.99	0.98	1.00	0.97	0.98	0.97
	success rate	0.99	0.97	0.99	0.96	0.97	0.96
Industrial Technology - BIT							
Apprenticeship Training (APRN)	# sections	5	5	5	5	5	5
	enrollment	90	78	73	63	57	55
	retention	1.00	1.00	0.99	1.00	1.00	0.96
	success rate	0.88	0.94	0.95	0.92	0.96	0.89

Retention and Success Rates by Discipline

Discipline		Fall 2006	Fall 2007	Fall 2008	Fall 2009	Fall 2010	Fall 2011
Architecture (ARCH)	# sections	5	8	6	5	5	4
	enrollment	71	120	98	94	85	77
	retention	0.87	0.86	0.92	0.94	0.80	0.82
	success rate	0.75	0.73	0.76	0.79	0.69	0.64
Auto Body (AB)	# sections	7	7	6	7	13	11
	enrollment	80	90	83	89	133	120
	retention	0.95	0.86	0.90	0.90	0.93	0.90
	success rate	0.85	0.72	0.88	0.83	0.79	0.70
Automotive Technology (AT)	# sections	11	10	11	15	12	12
	enrollment	199	213	208	253	276	258
	retention	0.80	0.79	0.83	0.87	0.86	0.88
	success rate	0.68	0.71	0.73	0.81	0.76	0.82
Computer Electronics (CEL)	# sections	1		2	3	3	
	enrollment	14		7	24	24	
	retention	1.00		1.00	0.96	1.00	
	success rate	0.71		1.00	0.75	0.75	
Computer Science (CS)	# sections					4	
	enrollment					50	
	retention					0.94	
	success rate					0.76	
Electronics (EL)	# sections	23	19	19	12	4	5
	enrollment	148	97	179	106	35	60
	retention	0.87	0.88	0.93	0.88	0.63	0.80
	success rate	0.66	0.51	0.66	0.71	0.51	0.65
Engineering Technology (ET)	# sections	4	2	4	2	2	2
	enrollment	54	35	27	49	48	49
	retention	0.85	0.91	0.93	0.94	0.90	0.94
	success rate	0.76	0.80	0.63	0.80	0.85	0.86
Machine Technology (MT)	# sections	5	4	2	2	5	5
	enrollment	23	25	16	22	90	94
	retention	0.87	0.92	1.00	0.82	0.83	0.89
	success rate	0.78	0.84	0.88	0.77	0.77	0.78
Welding Technology (WLDT)	# sections	18	16	12	9	11	9
	enrollment	198	140	134	144	191	147
	retention	0.89	0.81	0.96	0.91	0.93	0.87
	success rate	0.75	0.74	0.81	0.80	0.80	0.75

Retention and Success Rates by Discipline

Discipline		Fall 2006	Fall 2007	Fall 2008	Fall 2009	Fall 2010	Fall 2011
Kinesiology, Rec & Athletics - BPE							
Athletic Training (ATH)	# sections				1	1	1
	enrollment				33	36	35
	retention				0.91	0.92	0.80
	success rate				0.85	0.78	0.66
Health Education (HED)	# sections	16	16	15	16	17	18
	enrollment	559	681	641	714	809	827
	retention	0.89	0.92	0.93	0.94	0.90	0.93
	success rate	0.74	0.75	0.78	0.75	0.73	0.78
Intercollegiate Athletics (PEIA)	# sections	7	8	7	8	8	7
	enrollment	168	155	188	201	184	171
	retention	0.95	0.99	0.96	0.98	0.90	0.96
	success rate	0.91	0.96	0.95	0.96	0.88	0.94
Physical Education (PE)	# sections	61	53	46	43	29	25
	enrollment	1236	1383	1427	1447	1154	1095
	retention	0.87	0.88	0.89	0.89	0.84	0.94
	success rate	0.69	0.64	0.63	0.59	0.60	0.67
Recreation (REC)	# sections				3	4	4
	enrollment				115	135	158
	retention				0.92	0.92	0.94
	success rate				0.90	0.88	0.85
Languages and Communication - BLC							
American Sign Language (ASL)	# sections	3	2	2	1	3	3
	enrollment	81	56	59	37	81	64
	retention	0.81	0.89	0.86	0.89	0.86	0.88
	success rate	0.73	0.68	0.61	0.76	0.59	0.73
English as a Second Language (ESL)	# sections	18	26	21	17	16	12
	enrollment	235	355	260	239	225	161
	retention	0.88	0.93	0.90	0.94	0.91	0.93
	success rate	0.66	0.77	0.70	0.81	0.74	0.78
French (FRCH)	# sections	3	3	2	1	1	1
	enrollment	57	46	43	27	31	34
	retention	0.79	0.74	0.79	0.93	0.81	0.85
	success rate	0.75	0.67	0.67	0.81	0.68	0.74
Interdisciplinary Studies (IDST)	# sections	1	2				
	enrollment	16	30				
	retention	0.81	0.87				
	success rate	0.50	0.63				

Retention and Success Rates by Discipline

Discipline		Fall 2006	Fall 2007	Fall 2008	Fall 2009	Fall 2010	Fall 2011
Italian (ITAL)	# sections	4	6	3	2	2	5
	enrollment	59	83	66	52	69	85
	retention	0.71	0.64	0.56	0.58	0.42	0.73
	success rate	0.51	0.45	0.35	0.52	0.32	0.60
Latin (LATN)	# sections				1	1	
	enrollment				20	21	
	retention				1.00	0.90	
	success rate				0.95	0.86	
Spanish (SPAN)	# sections	15	15	12	14	13	12
	enrollment	329	339	311	354	359	309
	retention	0.71	0.72	0.83	0.87	0.79	0.85
	success rate	0.57	0.61	0.67	0.69	0.64	0.65
Speech Communication (SPCH)	# sections	28	27	28	26	28	27
	enrollment	568	597	680	666	805	750
	retention	0.94	0.88	0.91	0.91	0.90	0.90
	success rate	0.83	0.77	0.81	0.79	0.78	0.77
LAP - CLA							
Learning Skills (LS)	# sections	6	4	5	2	3	3
	enrollment	107	70	91	47	28	42
	retention	0.86	0.83	0.91	0.87	0.89	0.98
	success rate	0.82	0.73	0.73	0.74	0.79	0.86
Life & Physical Sciences - BLP							
Agribusiness (AG)	# sections	9	14	14	9	14	11
	enrollment	102	139	186	195	300	280
	retention	0.88	0.88	0.95	0.97	0.83	0.88
	success rate	0.75	0.76	0.80	0.85	0.75	0.72
Astronomy (ASTR)	# sections	5	5	3	3	3	3
	enrollment	214	163	182	261	243	271
	retention	0.78	0.81	0.94	0.87	0.89	0.88
	success rate	0.61	0.68	0.85	0.64	0.68	0.62
Biology (BIOL)	# sections	31	30	32	34	33	28
	enrollment	724	710	761	843	969	790
	retention	0.84	0.80	0.81	0.83	0.79	0.81
	success rate	0.71	0.67	0.68	0.67	0.63	0.67

Retention and Success Rates by Discipline

Discipline		Fall 2006	Fall 2007	Fall 2008	Fall 2009	Fall 2010	Fall 2011
Chemistry (CHEM)	# sections	17	16	14	13	14	13
	enrollment	332	329	340	341	422	380
	retention	0.92	0.87	0.89	0.90	0.87	0.87
	success rate	0.79	0.72	0.67	0.68	0.68	0.72
Environmental Studies (ENVS)	# sections	3	4	3	2	2	
	enrollment	40	55	60	32	33	
	retention	0.75	0.84	0.78	0.97	0.94	
	success rate	0.58	0.69	0.58	0.81	0.85	
Geology (GEOL)	# sections	4	4	3	2	3	3
	enrollment	66	70	56	60	71	88
	retention	0.88	0.76	0.93	0.87	0.80	0.88
	success rate	0.80	0.66	0.71	0.72	0.68	0.69
Physical Science (PHSC)	# sections	4	4	2	3	2	1
	enrollment	54	50	20	62	51	27
	retention	0.81	0.96	0.95	1.00	0.92	0.89
	success rate	0.63	0.90	0.70	0.94	0.82	0.74
Physics (PHYS)	# sections	8	9	8	7	8	7
	enrollment	151	149	150	171	198	197
	retention	0.90	0.89	0.85	0.85	0.82	0.76
	success rate	0.82	0.72	0.69	0.70	0.66	0.63
LRC - Library - BLR							
Library Skills (LBRY)	# sections	1	1	1	1	1	1
	enrollment	38	21	22	14	24	22
	retention	0.79	0.86	0.64	0.86	0.58	0.91
	success rate	0.63	0.52	0.55	0.50	0.54	0.73
Mathematical Sciences - BMS							
Computer Science (CS)	# sections	11	19	12	16	6	6
	enrollment	136	203	202	259	213	220
	retention	0.82	0.83	0.87	0.88	0.89	0.85
	success rate	0.57	0.61	0.64	0.75	0.78	0.64
Engineering (ENGR)	# sections	8	6	6	5	5	6
	enrollment	129	100	114	121	131	159
	retention	0.87	0.85	0.91	0.90	0.90	0.85
	success rate	0.83	0.80	0.76	0.73	0.73	0.81

Retention and Success Rates by Discipline

Discipline		Fall 2006	Fall 2007	Fall 2008	Fall 2009	Fall 2010	Fall 2011
Mathematics (MATH)	# sections	97	105	100	93	93	86
	enrollment	2529	2678	2807	2753	2963	2788
	retention	0.82	0.82	0.86	0.86	0.83	0.85
	success rate	0.57	0.61	0.63	0.61	0.60	0.64
Public Safety - BFS							
Emergency Medical Services (EMS)	# sections	18	29	20	17	21	20
	enrollment	418	487	436	455	506	465
	retention	0.98	0.94	0.97	0.95	0.88	0.91
	success rate	0.83	0.77	0.80	0.74	0.74	0.73
Environmental Technology (ENVT)	# sections	12	17	8	6	6	15
	enrollment	253	232	222	176	153	365
	retention	1.00	0.99	1.00	1.00	0.97	1.00
	success rate	0.94	0.91	0.94	0.95	0.94	0.99
Fire Technology (FT)	# sections	26	21	25	21	28	27
	enrollment	685	924	1164	1126	1174	832
	retention	0.93	0.91	0.92	0.89	0.86	0.90
	success rate	0.83	0.78	0.76	0.69	0.67	0.77
Law Enforcement (LE)	# sections	28	34	31	18	56	26
	enrollment	423	570	473	280	774	387
	retention	0.99	0.98	0.99	0.92	0.97	0.98
	success rate	0.97	0.96	0.98	0.90	0.96	0.96
Wildland Fire Technology (WFT)	# sections	7	3	6	2	3	
	enrollment	69	21	52	32	52	
	retention	0.96	0.81	0.92	0.81	0.87	
	success rate	0.86	0.57	0.79	0.44	0.35	
Wildland Fire Technology Opera (WFTO)	# sections	8	5	4	6	3	2
	enrollment	262	161	76	139	85	30
	retention	0.99	1.00	1.00	1.00	1.00	1.00
	success rate	0.99	1.00	1.00	1.00	1.00	1.00
Social & Behavioral Sciences - BSS							
Anthropology (ANTH)	# sections	16	18	14	14	19	17
	enrollment	407	426	518	584	822	755
	retention	0.72	0.78	0.77	0.83	0.73	0.68
	success rate	0.56	0.58	0.50	0.63	0.50	0.44

Retention and Success Rates by Discipline

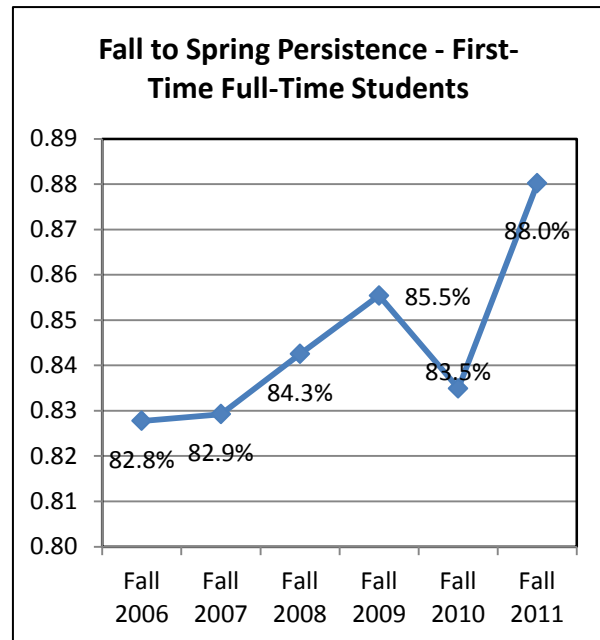
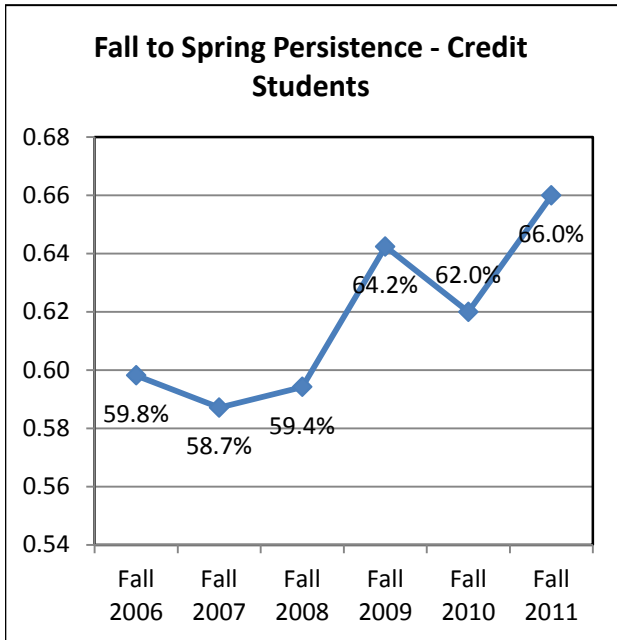
Discipline		Fall 2006	Fall 2007	Fall 2008	Fall 2009	Fall 2010	Fall 2011
Economics (ECON)	# sections	13	16	12	7	19	16
	enrollment	391	397	362	247	577	511
	retention	0.87	0.87	0.88	0.90	0.82	0.83
	success rate	0.60	0.60	0.60	0.72	0.59	0.57
Geography (GEOG)	# sections	7	7	7	6	8	4
	enrollment	159	194	249	225	284	160
	retention	0.85	0.85	0.90	0.81	0.86	0.89
	success rate	0.60	0.60	0.80	0.55	0.55	0.73
Global Studies (GBST)	# sections						1
	enrollment						33
	retention						0.91
	success rate						0.55
History (HIST)	# sections	38	46	35	44	41	35
	enrollment	1175	1448	1423	1941	1812	1620
	retention	0.84	0.87	0.87	0.90	0.87	0.86
	success rate	0.60	0.61	0.58	0.57	0.59	0.59
Humanities (HUM)	# sections	7		8		2	2
	enrollment	119		133		82	90
	retention	0.90		0.95		0.73	0.82
	success rate	0.66		0.74		0.46	0.56
International Studies (IS)	# sections			1	3		
	enrollment			1	45		
	retention			1.00	0.89		
	success rate			0.00	0.60		
Philosophy (PHIL)	# sections	19	18	19	14	16	11
	enrollment	478	502	612	580	599	402
	retention	0.85	0.88	0.90	0.90	0.88	0.87
	success rate	0.67	0.75	0.70	0.69	0.71	0.72
Political Science (POLS)	# sections	19	18	15	12	14	13
	enrollment	504	489	509	488	576	537
	retention	0.84	0.85	0.88	0.90	0.85	0.90
	success rate	0.75	0.71	0.69	0.70	0.71	0.74
Psychology (PSY)	# sections	38	38	40	30	40	37
	enrollment	1190	1301	1404	1042	1409	1350
	retention	0.89	0.89	0.85	0.89	0.85	0.84
	success rate	0.67	0.71	0.54	0.63	0.59	0.53

Retention and Success Rates by Discipline

Discipline		Fall 2006	Fall 2007	Fall 2008	Fall 2009	Fall 2010	Fall 2011
Sociology (SOC)	# sections	22	21	22	14	17	16
	enrollment	651	595	654	530	619	563
	retention	0.83	0.79	0.85	0.85	0.77	0.76
	success rate	0.62	0.58	0.57	0.61	0.56	0.57

Fall to Spring Persistence

Fall to Spring Persistence is measure of academic performance. Persistence in this report measures the percentage of students enrolled in the fall semester that return in the subsequent spring.



Fall 2010 to Spring 2011 Persistence

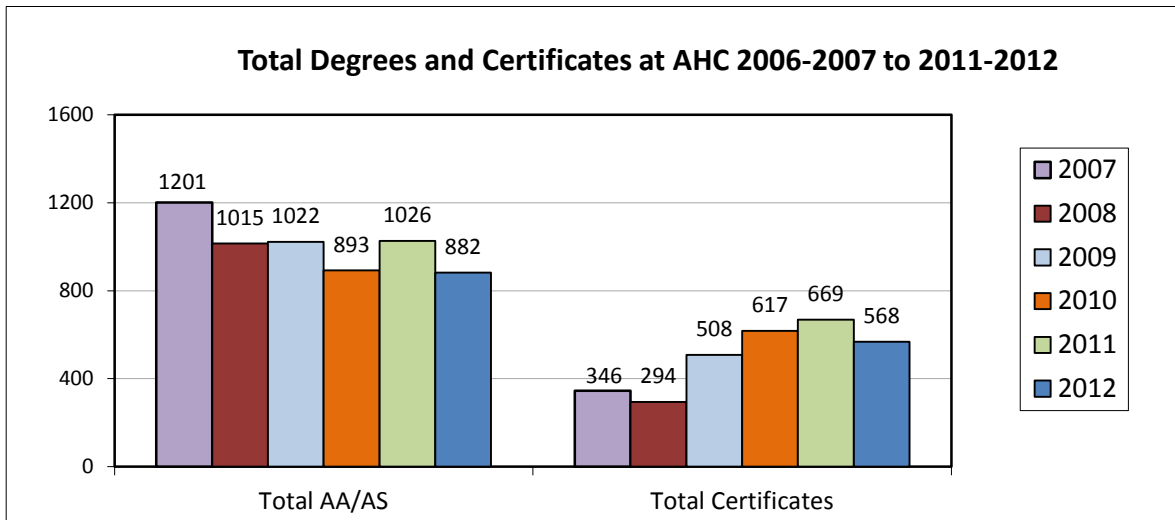
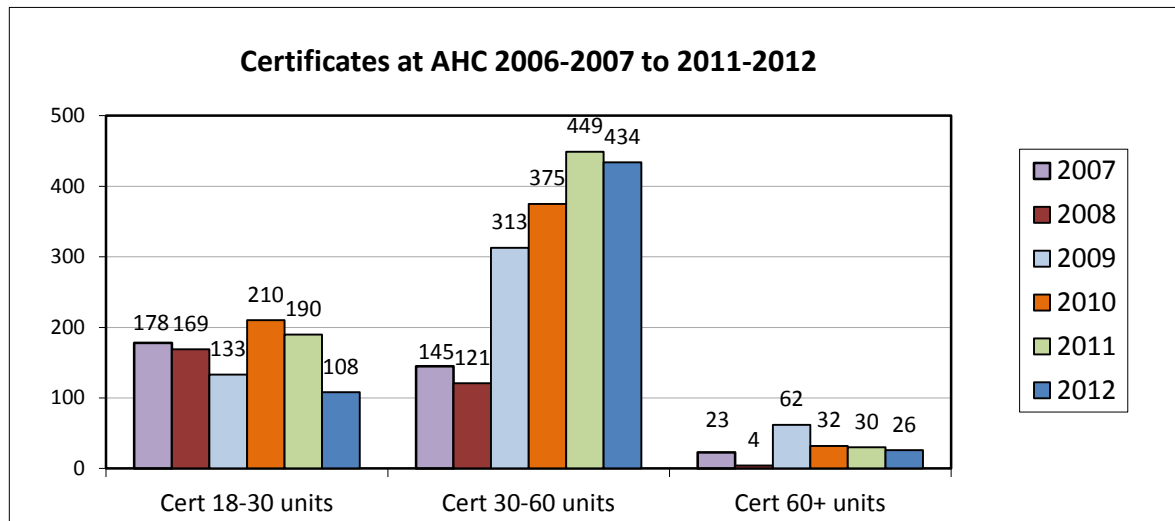
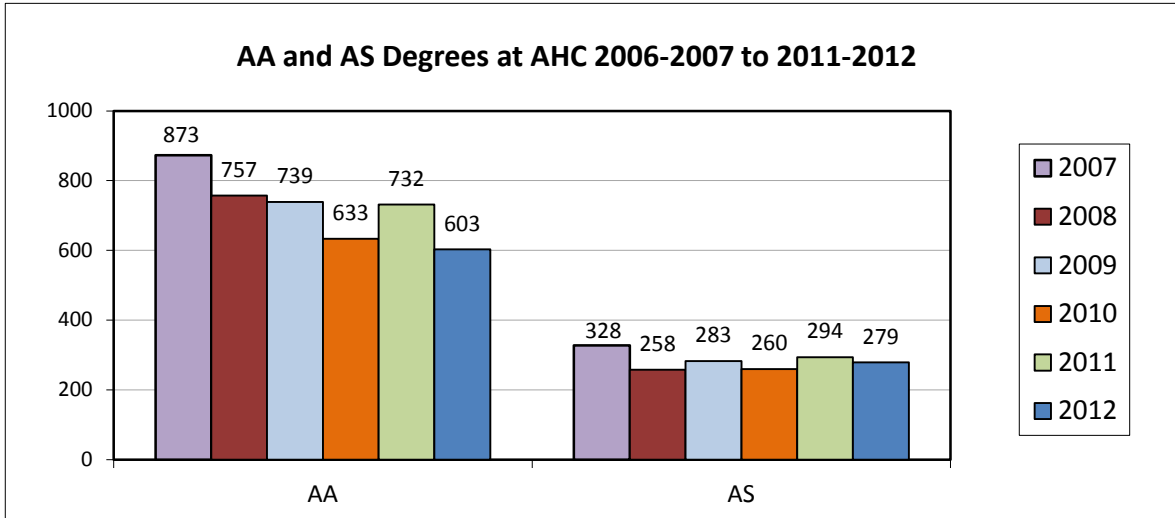
Gender	Credit Students	First-Time Full-Time Students
Female	68.4%	89.7%
Male	63.4%	86.3%
Total	66.0%	88.0%

Students at different stages in their career persist at different rates. First-time full-time students persist at much higher rates than general student body. (Full-time students are those enrolled in 12 units or more in the fall semester.) Also, females historically persist at higher rates than males.

Ethnicity	Credit Students	First-Time Full-Time Students
Afr.-American	60.6%	80.0%
Am. Indian	57.1%	100.0%
Asian	68.3%	94.4%
Hispanic	70.3%	88.9%
Multi-Ethn.	72.3%	84.6%
Pacific Isl.	66.7%	83.3%
Unknown	19.0%	N/A
White	61.3%	84.6%
Total	66.0%	88.0%

Educational Goal	Credit Students	First-Time Full-Time Students
Transfer	76.5%	90.0%
Degree/Cert	62.8%	84.0%
Career	51.7%	69.7%
Basic Skills	57.7%	91.7%
Other	64.6%	86.7%
Total	66.0%	88.0%

Degrees and Certificates at AHC



Degrees and Certificates at AHC

Whereas the number of awarded AA/AS degrees remained relatively stable in the last 6 years (with a peak in 2006-2007 and a low in 2009-2010), the number of awarded Certificates has been increasing. This is due to an increase in CSU Gen Ed/IGETC Gen Ed/Transfer Studies Certificates in the last 3 years.

AA Degrees	2006 - 2007	2007 - 2008	2008 - 2009	2009 - 2010	2010 - 2011	2011 - 2012
Agribusiness	0	0	0	0	2	2
Art	3	3	0	1	1	1
Biology	3	5	2	6	7	14
Business Administration	15	15	22	23	29	29
Chemistry	8	6	6	5	16	9
Computer Science	2	0	0	2	4	10
Culinology	0	0	0	0	1	4
Dance	3	1	1	0	4	2
Engineering	6	8	7	4	15	10
English	2	3	3	5	6	2
Environmental Studies	0	1	0	0	0	0
International Studies	0	1	0	1	1	0
Liberal Arts	490	439	452	415	482	424
Liberal Studies	0	0	0	3	1	3
Mathematics	17	7	13	9	27	19
Music	4	2	0	1	1	3
Physical Education	0	2	1	4	0	1
Physics	8	6	5	5	18	9
Psychology	14	9	20	22	21	20
Social Science	10	7	3	11	16	7
Spanish	0	3	2	4	1	4
Speech Communication	5	1	1	4	3	8
Transfer Studies	283	238	201	108	76	22
Total	873	757	739	633	732	603

Degrees and Certificates at AHC

AS Degrees	2006 - 2007	2007 - 2008	2008 - 2009	2009 - 2010	2010 - 2011	2011 - 2012
Accounting	10	8	6	6	13	12
Administration Of Justice	38	27	35	34	32	36
Agribusiness	0	1	4	2	2	4
Applied Design Media	0	0	0	1	3	0
Applied Design/Media	18	5	11	10	10	13
Architectural Drafting	3	2	3	4	4	4
Auto Body Technology	0	0	3	2	0	1
Automotive Technology	7	4	4	9	8	5
Business	20	20	10	15	13	17
Comp Bus Info Systms (CBIS)	1	2	1	0	3	1
Comp Bus Office Tech (CBOT)	8	17	14	10	22	9
Conv Degree/Cert Awarded	29	15	11	1	0	0
Cosmetology	3	3	2	3	2	5
Dental Assisting	6	6	13	7	9	6
Early Childhood Studies	37	23	31	15	24	20
Electronics Technology	4	3	4	3	2	0
Emergency Medical Services	3	2	4	0	4	1
Engineering Technology	0	0	0	1	2	0
Family and Consumer Science	2	1	1	3	1	4
Film and Video Production	0	0	0	0	4	0
Fire Technology	60	39	42	51	51	50
Graphic Communication	0	0	0	1	0	0
Human Services	14	10	4	11	11	11
Machine Technology	1	1	0	0	0	0
Medical Assisting	0	0	0	3	5	1
Nursing	63	69	76	66	63	64
Pharmacy Technology	0	0	0	1	0	0
Recreation Management	0	0	0	0	1	13
Welding Technology	0	0	3	1	4	2
Wildland Firefighting	1	0	1	0	1	0
Total	328	258	283	260	294	279

Certificates 60+ units	2006 - 2007	2007 - 2008	2008 - 2009	2009 - 2010	2010 - 2011	2011 - 2012
Drama	23	4	62	32	30	26
Total	23	4	62	32	30	26

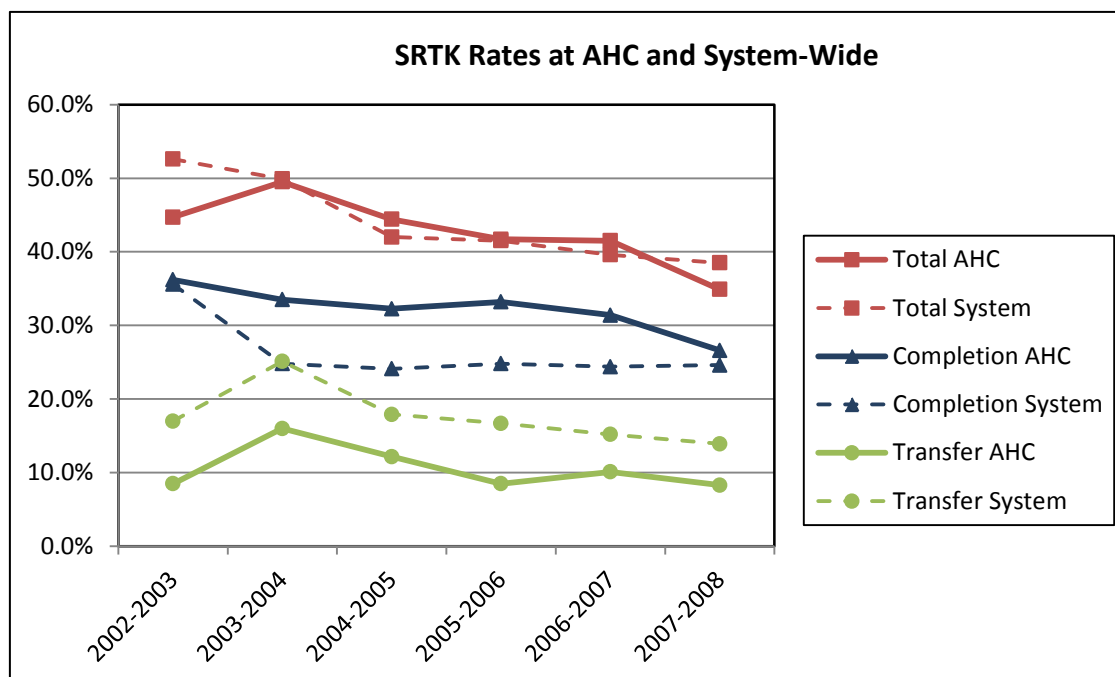
Degrees and Certificates at AHC

Certificates 30-<60 units	2006 - 2007	2007 - 2008	2008 - 2009	2009 - 2010	2010 - 2011	2011 - 2012
Automotive Technology	4	0	0	0	9	1
Comp Bus Info Systms (CBIS)	1	0	2	0	0	0
Conv Degree/Cert Awarded	6	0	0	0	0	0
CSU Gen Ed Cert	0	0	109	177	0	0
Culinary Arts and Managemen	0	0	0	0	1	0
Dance	0	1	1	0	0	0
Dental Assisting	0	0	0	0	29	26
Early Childhood Studies	4	4	5	9	5	4
Electronics Technology	0	1	1	0	0	0
Film and Video Production	0	0	0	1	0	0
Fire Technology	53	32	57	41	40	25
Human Services	15	12	10	4	18	8
IGETC Gen Ed Cert	0	0	52	77	0	0
Medical Assisting	0	0	0	0	20	22
Nursing	62	71	76	66	1	1
Transfer Studies	0	0	0	0	324	347
Welding Technology	0	0	0	0	2	0
Total	145	121	313	375	449	434
Certificates 18-<30 units	2006 - 2007	2007 - 2008	2008 - 2009	2009 - 2010	2010 - 2011	2011 - 2012
Accounting	1	3	1	2	2	0
Agribusiness	1	0	0	0	0	0
Auto Body Technology	0	1	2	2	3	1
Automotive Technology	0	0	0	0	3	0
Business	3	2	1	3	1	1
Comp Bus Office Tech (CBOT)	2	2	7	6	7	3
Conv Degree/Cert Awarded	22	11	10	1	0	0
Cosmetology	94	101	74	139	124	57
Culinary Arts and Managemen	3	0	1	3	1	2
Dental Assisting	23	18	21	25	0	0
Early Childhood Studies	11	21	7	5	0	0
Electronics Technology	0	0	0	1	1	0
Environmental Technology	0	1	0	0	0	0
Family and Consumer Science	0	3	0	1	1	1
Human Services	15	4	3	5	9	3
Law Enforcement	0	0	0	0	0	33
Med Assisting-Administrative	0	0	0	3	0	0
Med Assisting-Clinical	0	0	0	8	4	1
Medical Assisting	0	0	0	0	21	2
Sound Technology	3	2	2	1	2	1
Transfer Studies	0	0	3	4	2	0
Welding Technology	0	0	1	1	9	3
Total	178	169	133	210	190	108

Student Right-to-Know Completion and Transfer Rates

Student Right-to-Know (SRTK) refers to a federally mandated public disclosure of a college's completion and transfer rate.

	Completion		Transfer		Total	
	AHC	System	AHC	System	AHC	System
2002-2003	36.2%	35.6%	8.5%	17.0%	44.7%	52.6%
2003-2004	33.5%	24.8%	16.0%	25.1%	49.5%	49.9%
2004-2005	32.3%	24.1%	12.2%	17.9%	44.4%	42.0%
2005-2006	33.2%	24.8%	8.5%	16.7%	41.7%	41.5%
2006-2007	31.4%	24.4%	10.1%	15.2%	41.5%	39.6%
2007-2008	26.6%	24.6%	8.3%	13.9%	34.9%	38.5%



SRTK is a "cohort" study. The SRTK Cohort is a group of students who are first-time freshmen, enrolled full-time and are degree-seeking. These students are identified in a fall term and their outcomes are measured over a period of time. The SRTK Cohort produces two measures. The first measure is the Completion Rate (the total number of students in the cohort who earn either a degree, a certificate, or who successfully completed a two-year-equivalent transfer-preparatory program). The second measure is the Transfer Rate (the total number of cohort non-completers who were identified as having enrolled in another institution). The tracking period of the cohorts is three (3) years, at which time the SRTK rates are calculated and made public.

SRTK has its merits in that it attempts to provide a standardized measure of college effectiveness nationwide. However, in order to fully understand what SRTK rates mean for a college, one should also know its limitations. First, the cohort group can be quite small compared to the entire Community College population, and is therefore not fully representative of all educational activities at a college. Many Community Colleges do not have the primary mission of producing only transferable students. Additionally, **the Federal methodology lowers the Transfer rate for**

Transfers to CSU

Number of Full-Year Transfers to the California State University Allan Hancock College

Years 2002-03 through 2011-12

Academic Year	CSU	
	Number	% Change
2002-03	311	-1.9%
2003-04	290	-6.8%
2004-05	326	12.4%
2005-06	297	-8.9%
2006-07	294	-1.0%
2007-08	297	1.0%
2008-09	211	-29.0%
2009-10	228	8%
2010-11	194	-14.9%
2011-12	242	25%

After a drop in 2008-2009, AHC transfers to the CSU system seemed to slowly recover.

Some of the more popular CSU transfer destinations include Cal Poly, Northridge, and Fresno. San Diego State has lost its popularity over the last 3 years.

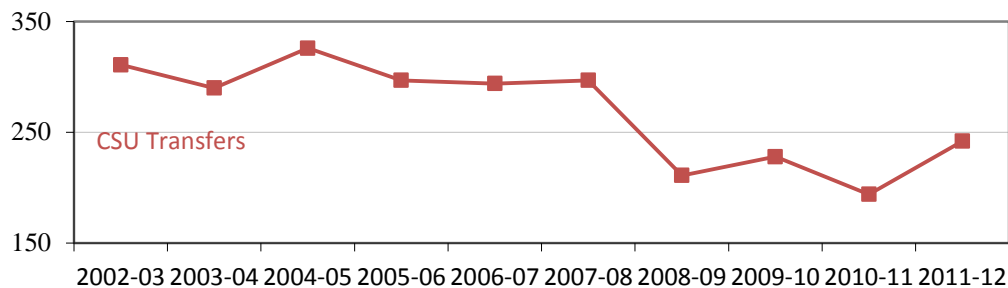
Number of Full-Year Transfers to the California State University California Community Colleges

Years 2002-03 through 2011-12

Academic Year	CSU	
	Number	% Change
2002-03	50,744	0.6%
2003-04	48,317	-4.8%
2004-05	53,693	11.1%
2005-06	52,640	-2.0%
2006-07	54,379	3.3%
2007-08	54,970	1.1%
2008-09	49,768	-9.5%
2009-10	37,651	-24.3%
2010-11	39,143	4.0%
2011-12	37,911	-3.1%

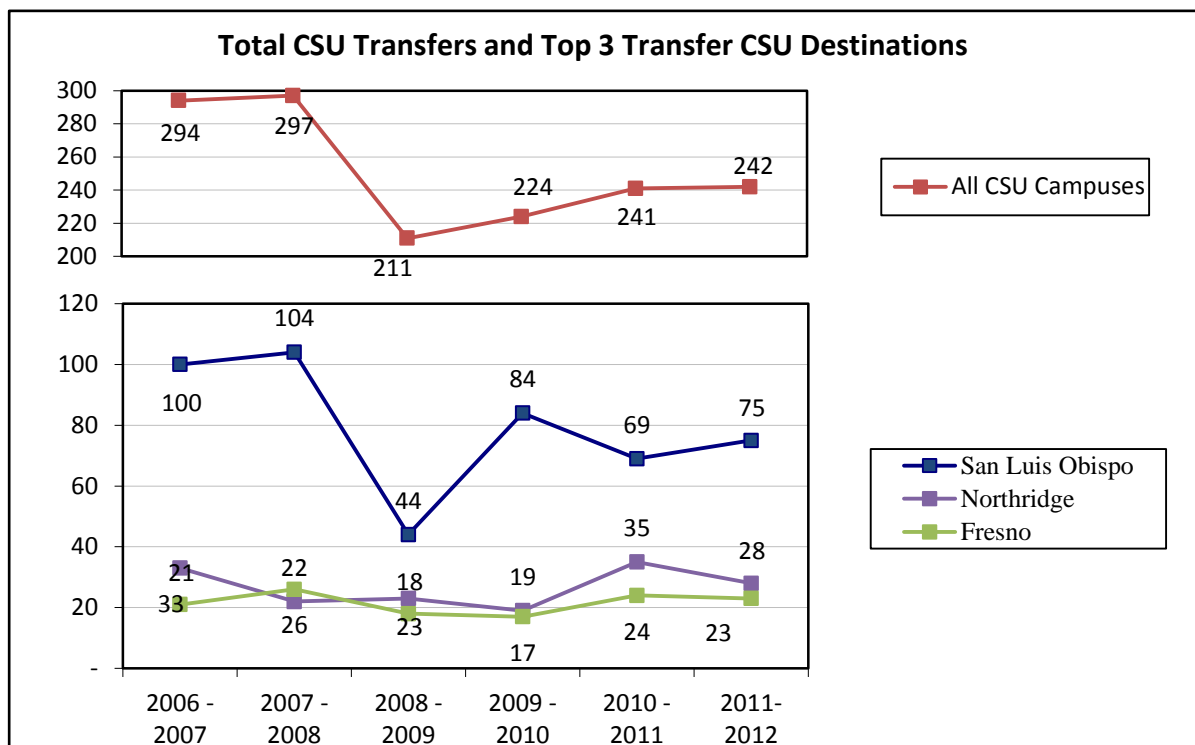
UC transfer data is no longer available as of 2011. The website the provided the data was funded by the State of CA and is no longer in operation.

AHC Historical Transfer Data



Transfers to CSU

CSU Campus Destination	2006 - 2007	2007 - 2008	2008 - 2009	2009 - 2010	2010 - 2011	2011-2012
Bakersfield	3	10	7	7	7	5
Channel Islands	12	8	5	7	11	15
Chico	9	12	13	11	6	10
Dominguez Hills	2	4	6	3	5	4
East Bay	2	1	6	4	7	6
Fresno	21	26	18	17	24	23
Fullerton	11	11	12	7	6	4
Humboldt	7	8	8	1	5	3
Long Beach	20	24	9	8	15	15
Los Angeles	4	5	5	3	8	6
Maritime Academy	-	-	-	-	-	-
Monterey Bay	7	4	4	7	6	9
Northridge	33	22	23	19	35	28
Pomona	6	3	2	1	2	-
Sacramento	6	3	9	11	9	7
San Bernardino	1	5	1	2	-	-
San Diego	23	27	11	2	5	5
San Francisco	11	10	15	11	7	12
San Jose	12	7	12	11	11	10
San Luis Obispo	100	104	44	84	69	75
San Marcos	-	1	-	5	-	2
Sonoma	2	2	-	1	2	-
Stanislaus	2	-	1	2	1	3
Total	294	297	211	224	241	242



Performance and Persistence of AHC Transfer Students at AHC

2008-09

		Pre-admission GPA
AHC		3.03
Systemwide		3.03

	Enrolled Fall 2008	Continuation Fall 2009		CSU GPA	
		Number	Rate	Number	Average
AHC	165	145	87.9%	143	2.92
Upper Division	156	137	87.8%	135	2.93
Lower Division	9	8	88.9%	8	2.59

Systemwide	33,278	28,238	84.9%	27,840	2.98
Upper Division	31,390	26,781	85.3%	26,417	2.99
Lower Division	1,888	1,457	77.2%	1,423	2.78

2009-10

		Pre-admission GPA
AHC		3.06
Systemwide		3.00

	Enrolled Fall 2009	Continuation Fall 2010		CSU GPA	
		Number	Rate	Number	Average
AHC	219	191	87.2%	191	2.97
Upper Division	216	189	87.5%	189	2.97
Lower Division	3	2	66.7%	2	2.92

Systemwide	35,655	30,481	85.5%	30,171	2.98
Upper Division	34,191	29,348	85.8%	29,065	2.98
Lower Division	1,464	1,133	77.4%	1,106	2.87

2010-11

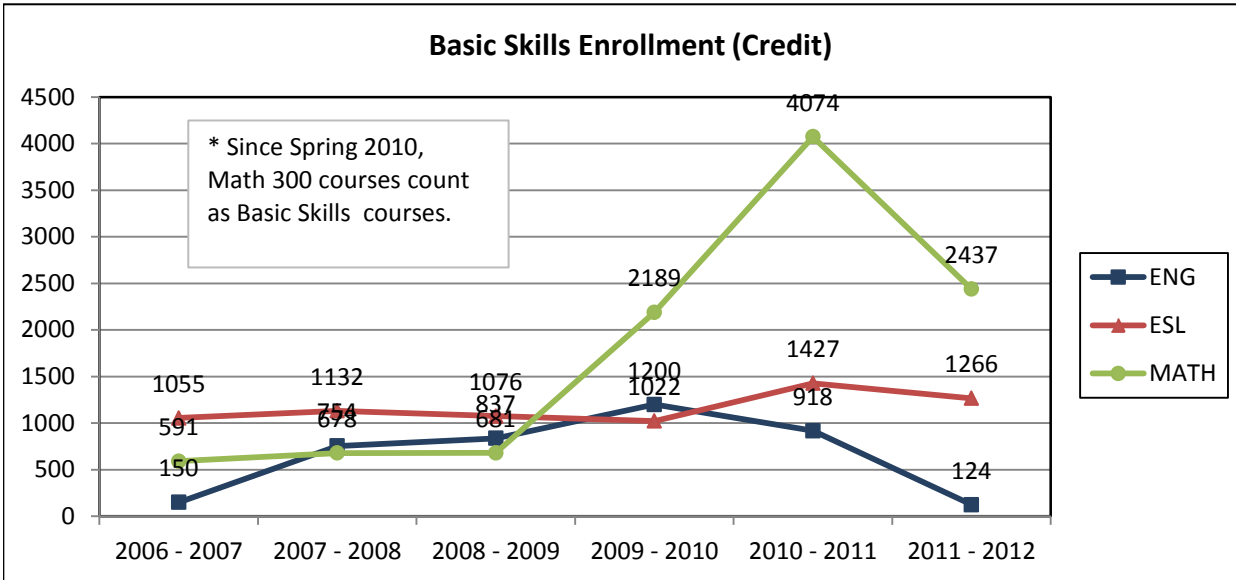
		Pre-admission GPA
AHC		3.19
Systemwide		3.05

	Enrolled Fall 2010	Continuation Fall 2011		CSU GPA	
		Number	Rate	Number	Average
AHC	194	172	89.0%	171	2.94
Upper Division	188	167	89.0%	166	2.95
Lower Division	6	5	83.0%	5	2.72

Systemwide	39,143	34,425	88.0%	34,121	3.03
Upper Division	38,613	34,020	88.0%	33,725	3.03
Lower Division	530	405	76.0%	396	2.88

Basic Skills Enrollment and Performance Indicators

The mission of the California Community College system includes pre-collegiate basic skills education. Credit and noncredit courses are offered to facilitate transition towards associate and transfer level courses for students lacking requisite skills. The three primary areas of basic skills instruction include English (reading and writing), ESL (English as a second language), and mathematics.



2010-2011 Retention and Success for the 3 Primary Basic Skills Categories (English, ESL, and Math)

Gender	English		ESL		Math	
	Retention	Success	Retention	Success	Retention	Success
Female	86.6%	56.7%	85.3%	59.8%	87.2%	65.2%
Male	86.0%	50.9%	50.0%	50.0%	85.7%	65.1%
Total	89.4%	67.3%	87.8%	64.3%	86.6%	65.2%

Ethnicity	English		ESL		Math	
	Retention Rate	Success Rate	Retention Rate	Success Rate	Retention Rate	Success Rate
Afr.-Amer.	100.0%	100.0%	91.4%	79.0%	86.5%	61.9%
Am. Indian	100.0%	100.0%	88.5%	64.3%	90.9%	63.6%
Asian	100.0%	75.0%	80.0%	54.3%	82.4%	70.6%
Hispanic	86.3%	50.5%	100.0%	100.0%	75.0%	50.0%
Multi-Ethn.	60.0%	60.0%	84.2%	63.9%	86.2%	70.2%
Pacific Isl.	88.9%	61.1%	87.8%	64.3%	86.6%	65.2%
Unknown	86.3%	54.0%	87.7%	61.3%	100.0%	100.0%
White	87.5%	40.6%	75.0%	41.7%	100.0%	100.0%
Total	100.0%	50.0%	89.3%	80.0%	0.0%	0.0%