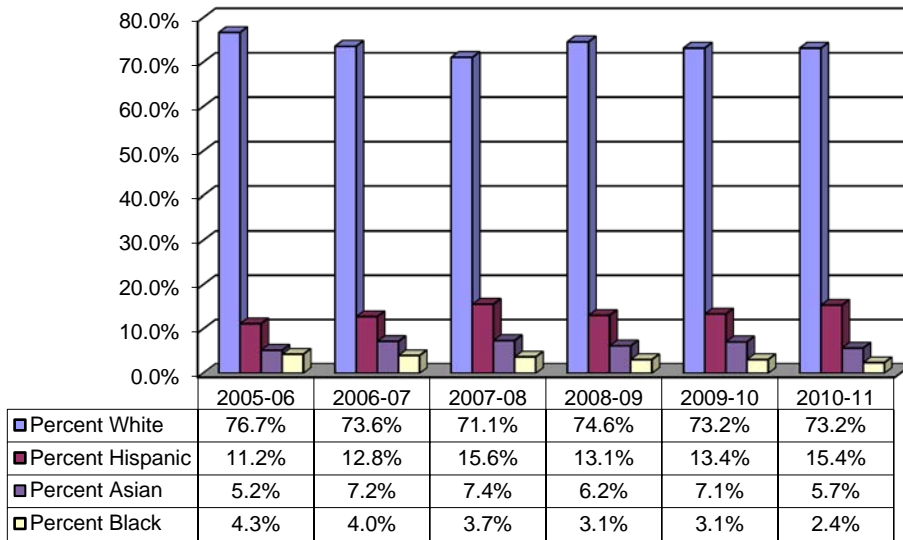


## 13. Staff

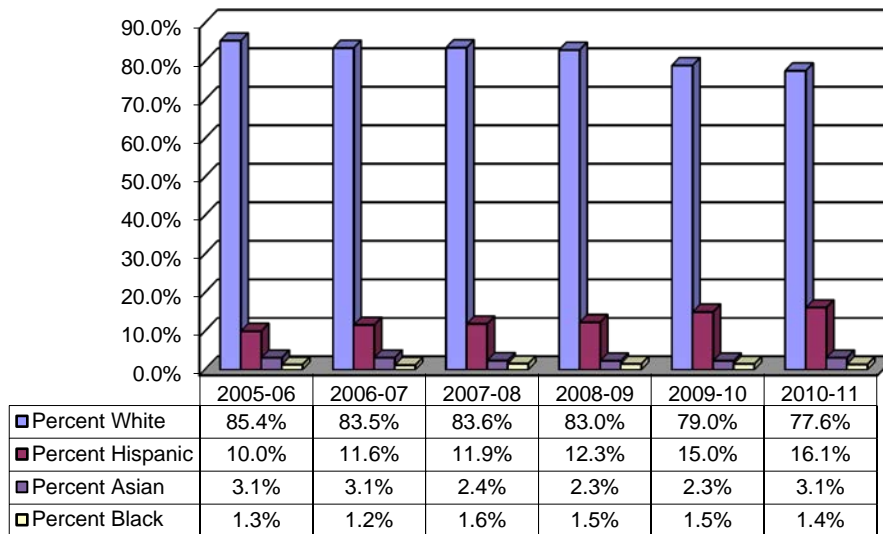
<b>Topic</b>	<b>Page</b>
<i>Staff Employee Historical Ethnicity</i>	<i>13-2</i>
<i>AHC Staff by Ethnicity</i>	<i>13-4</i>
<i>AHC Staff by Age</i>	<i>13-5</i>
<i>AHC Staff by Gender</i>	<i>13-6</i>
<i>Staff Employee Statistical Totals, Historical Comparison</i>	<i>13-7</i>
<i>Staff Employee Statistical Totals, 2009-2010</i>	<i>13-8</i>
<i>Staff Employee Statistical Totals, 2009-2010: New Hires Only</i>	<i>13-10</i>
<i>Staff Employee Statistical Totals, 2010-2011</i>	<i>13-12</i>
<i>Staff Employee Statistical Totals, 2010-2011: New Hires Only</i>	<i>13-14</i>

## Staff Employee Historical Ethnicity Data

### Full-time Faculty



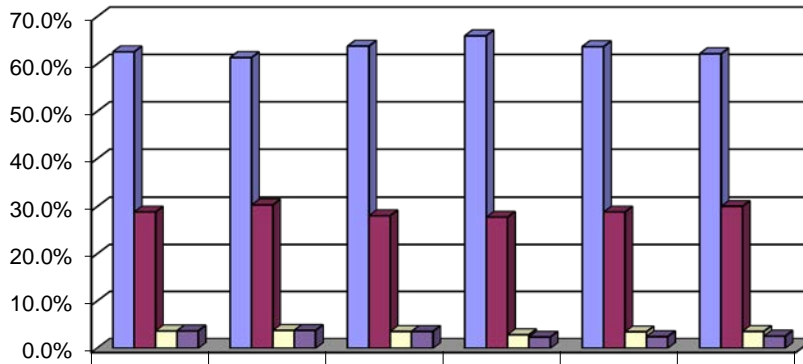
### Part-time Faculty



Among all employee groups at Allan Hancock, the largest ethnic groups are White, Hispanic, Asian and Black. The percent of representation of each ethnic group varies by employee group and over time. Data for full and part-time faculty shows that full-time faculty are increasingly more non-white (26.8%) while 22.4% of part-time faculty are non-white. Noncredit faculty are the most diverse with 32.9% non-white. The percent of full-time faculty that are Hispanic increased from 11.5% in 2003-04 to 15.4% in 2010-11.

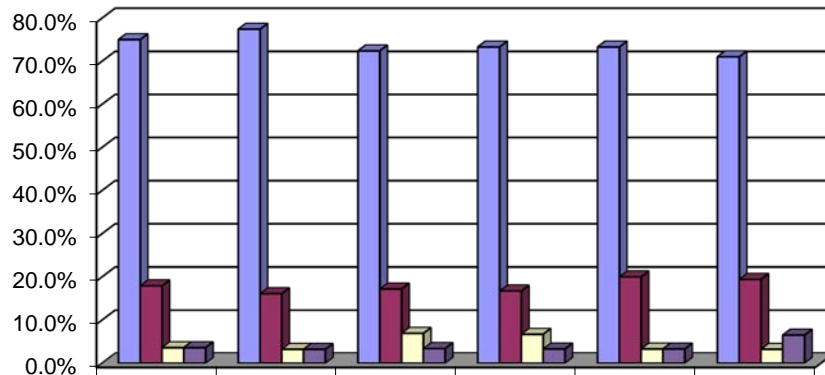
## Staff Employee Historical Ethnicity Data

### Full-time Classified



	2005-06	2006-07	2007-08	2008-09	2009-10	2010-11
■ Percent White	62.6%	61.4%	63.8%	66.0%	63.7%	62.2%
■ Percent Hispanic	28.9%	30.4%	28.1%	27.8%	28.9%	30.1%
■ Percent Black	3.7%	3.8%	3.6%	2.9%	3.5%	3.6%
■ Percent Asian	3.7%	3.8%	3.6%	2.4%	2.5%	2.6%

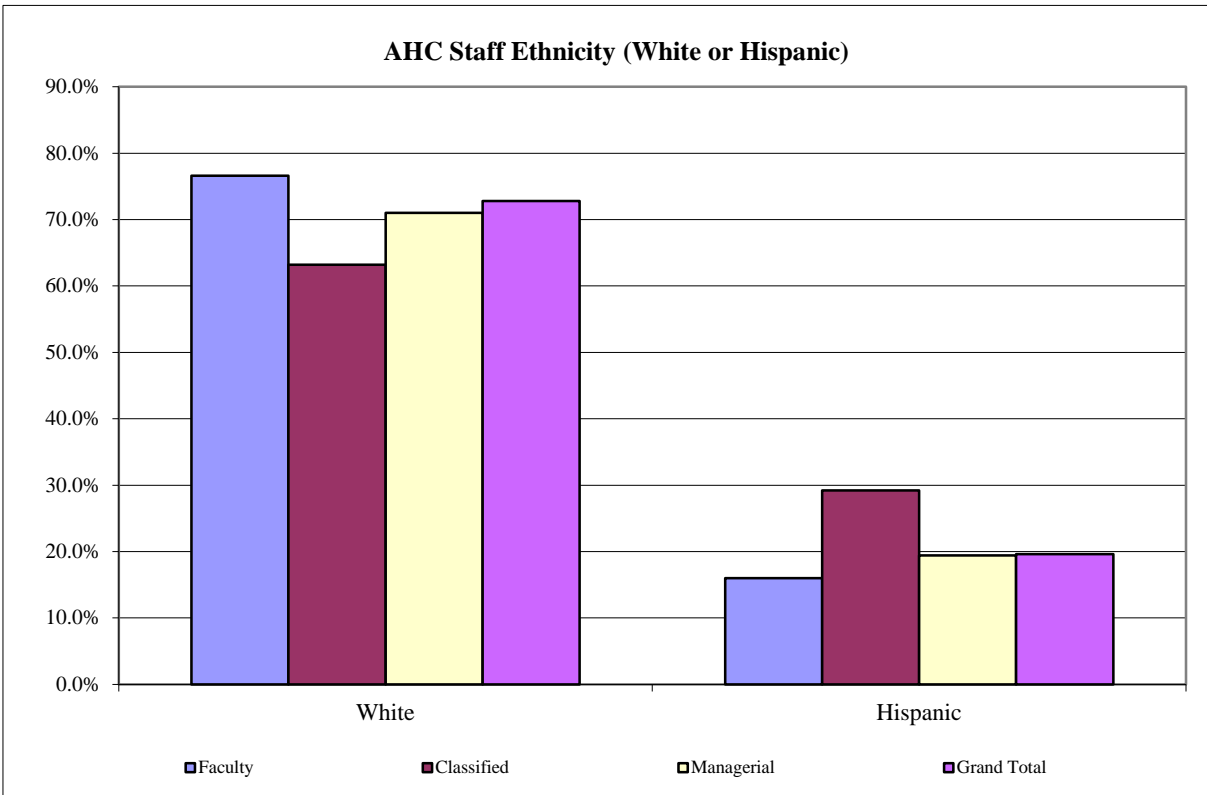
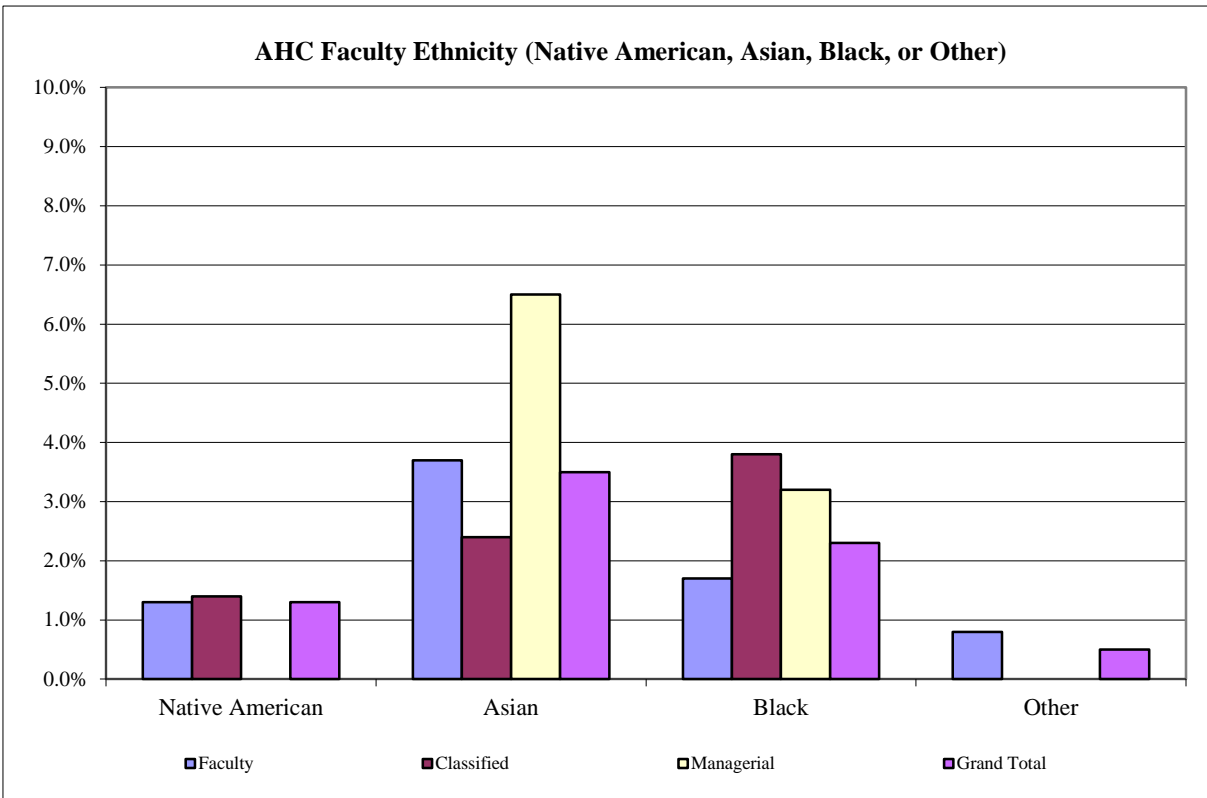
### Managerial



	2005-06	2006-07	2007-08	2008-09	2009-10	2010-11
■ Percent White	75.0%	77.4%	72.4%	73.3%	73.3%	71.0%
■ Percent Hispanic	17.9%	16.1%	17.2%	16.7%	20.0%	19.4%
■ Percent Black	3.6%	3.2%	6.9%	6.7%	3.3%	3.2%
■ Percent Asian	3.6%	3.2%	3.4%	3.3%	3.3%	6.5%

More diversity is found among the full-time classified employees than among faculty. Classified employees were 30.1% Hispanic and 3.6% black at the time of the snap shot. Approximately 29% of the managerial staff are.

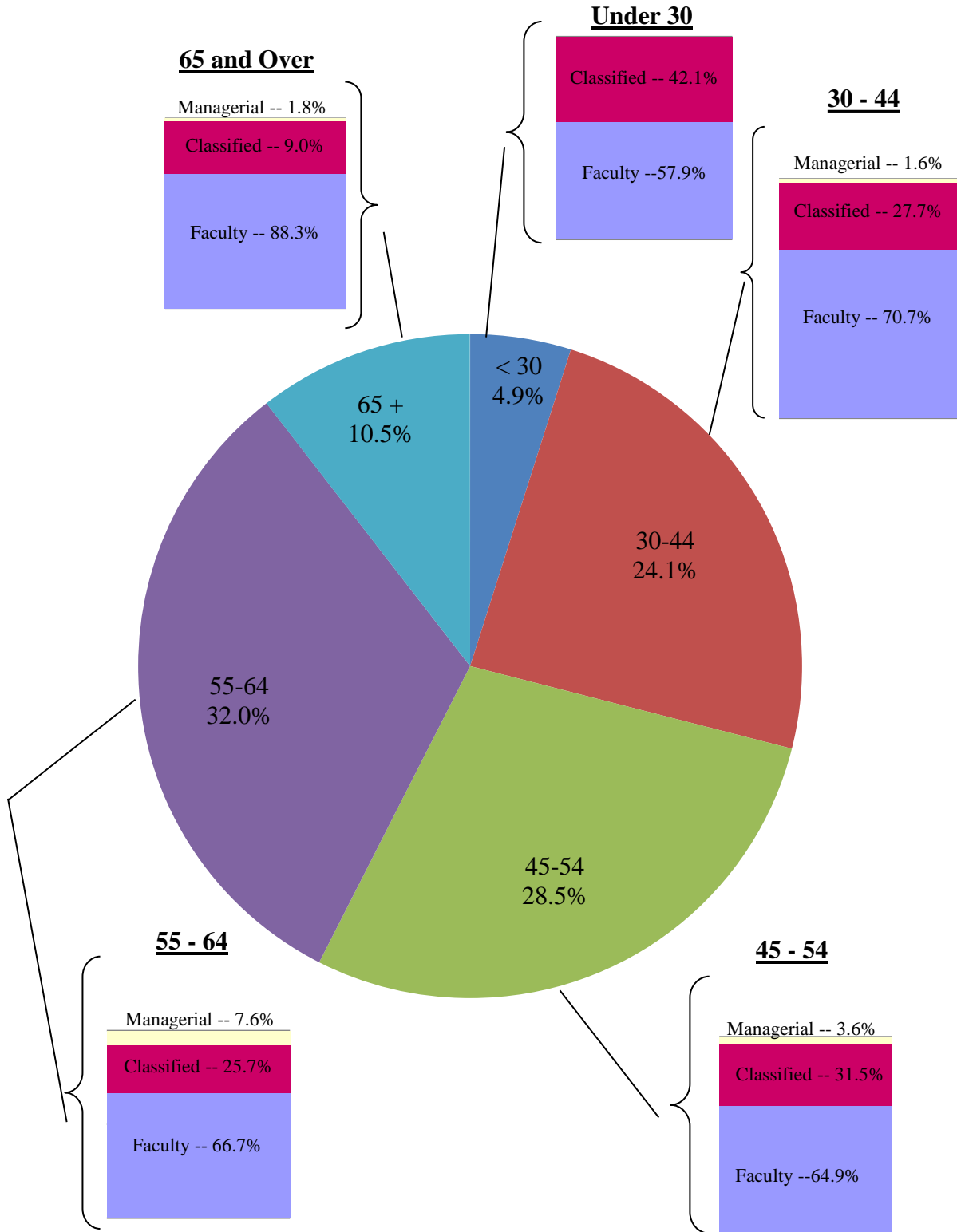
## AHC Staff by Ethnicity: 2010 to 2011



*\*This report includes staff data from Nov. 1 to Oct. 31*

## AHC Staff by Age: 2010 to 2011

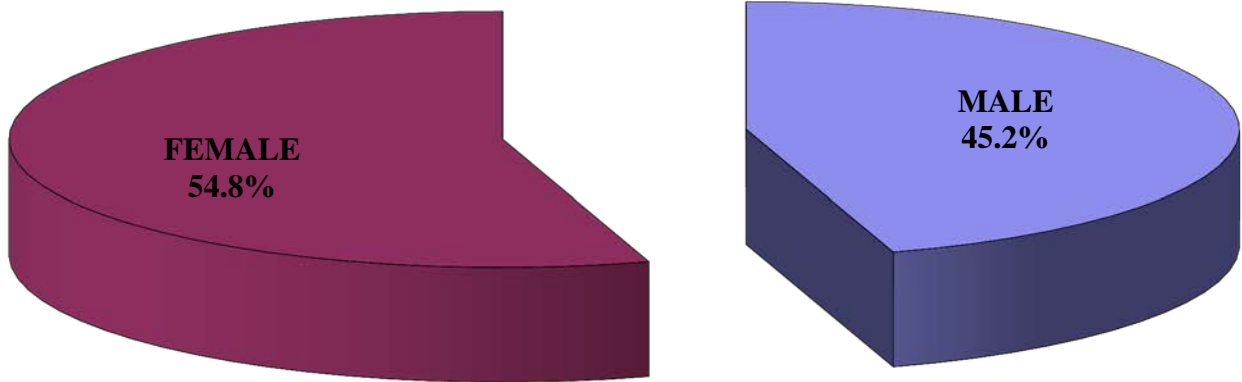
Note: The pie chart represents all AHC Staff. The small bar charts represent the percent of employee classification within each age group



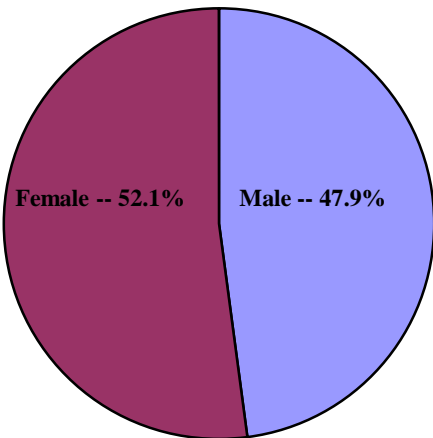
\*This report includes staff data from Nov. 1 to Oct. 31

# AHC Staff by Gender: 2010 to 2011

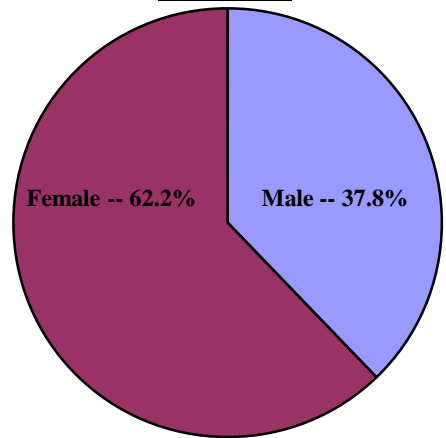
## All AHC Staff



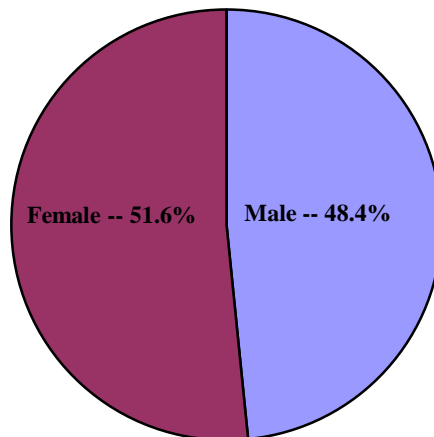
## Faculty



## Classified



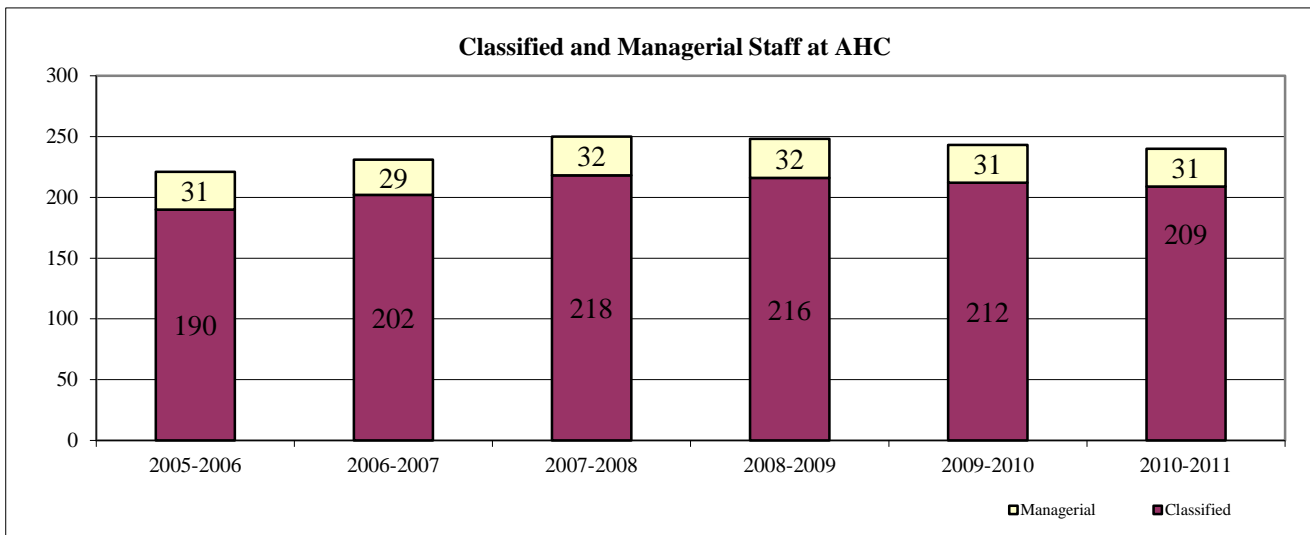
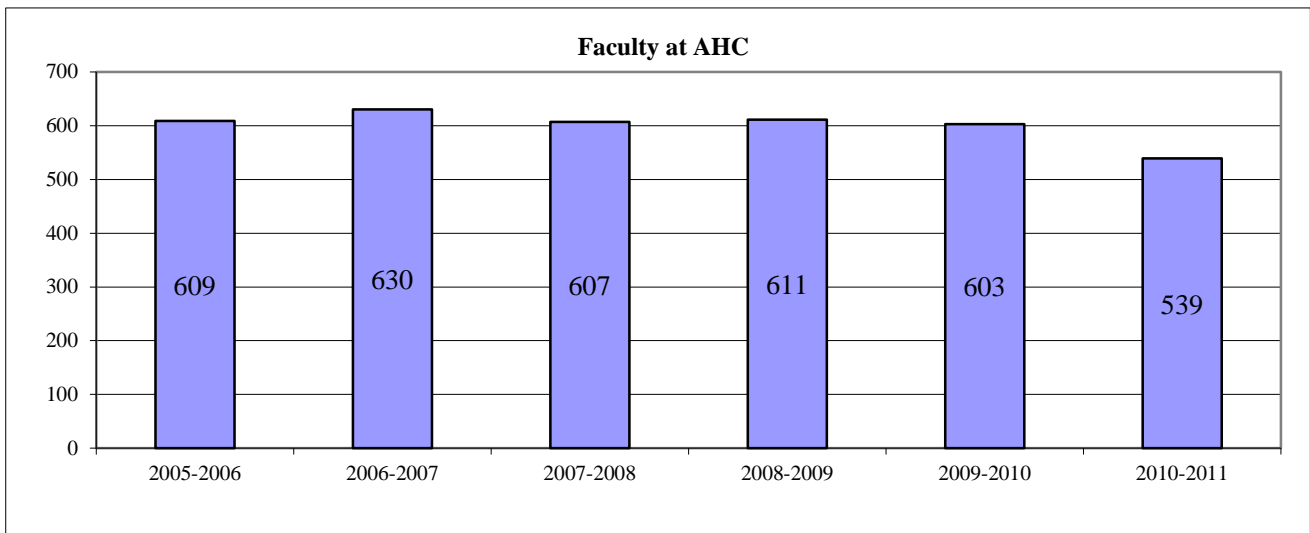
## Managerial



*\*This report includes staff data from Nov. 1 to Oct. 31*

## Staff Employee Statistical Totals: Historical Comparison

	2005-2006	2006-2007	2007-2008	2008-2009	2009-2010	2010-2011
<b>Faculty</b>						
Full Time	124	131	132	130	123	122
Part Time	387	395	362	385	385	335
Non-Credit Teaching	98	104	113	96	95	82
<i>Sub-Total:</i>	609	630	607	611	603	539
<b>Classified</b>						
Full Time Classified	184	196	213	209	201	196
Part Time Classified	6	6	5	7	11	13
<i>Sub-Total:</i>	190	202	218	216	212	209
<b>Managerial</b>	31	29	32	32	31	31
<b>Grand Total:</b>	<b>830</b>	<b>861</b>	<b>857</b>	<b>859</b>	<b>846</b>	<b>779</b>



\*This report includes staff data from Nov. 1 to Oct. 31

## Staff Employee Statistical Totals: 2009 to 2010

	COUNT	NEW HIRES	Age				
			< 30	30-44	45-54	55-64	65 +
Faculty							
Full Time	126	18	2	33	40	45	7
Part Time	381	82	18	97	112	100	54
Non-Credit Teaching	96	16	9	16	17	32	21
<i>Sub-Total:</i>	<b>603</b>	<b>116</b>	<b>29</b>	<b>146</b>	<b>169</b>	<b>177</b>	<b>82</b>
Classified							
Full Time Classified	201	20	16	52	72	54	7
Part Time Classified	11	6	0	6	2	3	0
<i>Sub-Total:</i>	<b>212</b>	<b>26</b>	<b>16</b>	<b>58</b>	<b>74</b>	<b>57</b>	<b>7</b>
Managerial	<b>31</b>	<b>3</b>	<b>0</b>	<b>2</b>	<b>11</b>	<b>17</b>	<b>1</b>
<b>Grand Total:</b>	<b>846</b>	<b>145</b>	<b>45</b>	<b>206</b>	<b>254</b>	<b>251</b>	<b>90</b>

PERCENT OF EMPLOYMENT CLASSIFICATION							
	% OF TOTAL		< 30	30-44	45-54	55-64	65 +
Faculty							
Full Time	14.9%		1.6%	26.2%	31.7%	35.7%	5.6%
Part Time	45.0%		4.7%	25.5%	29.4%	26.2%	14.2%
Non-Credit Teaching	11.3%		9.4%	16.7%	17.7%	33.3%	21.9%
<i>Sub-Total:</i>	<b>71.3%</b>		<b>4.8%</b>	<b>24.2%</b>	<b>28.0%</b>	<b>29.4%</b>	<b>13.6%</b>
Classified							
Full Time Classified	23.8%		8.0%	25.9%	35.8%	26.9%	3.5%
Part Time Classified	1.3%		0.0%	54.5%	18.2%	27.3%	0.0%
<i>Sub-Total:</i>	<b>25.1%</b>		<b>7.5%</b>	<b>27.4%</b>	<b>34.9%</b>	<b>26.9%</b>	<b>3.3%</b>
Managerial	<b>3.7%</b>		<b>0.0%</b>	<b>1.0%</b>	<b>4.3%</b>	<b>6.8%</b>	<b>1.1%</b>
<b>Grand Total:</b>	<b>100.0%</b>		<b>5.3%</b>	<b>24.3%</b>	<b>30.0%</b>	<b>29.7%</b>	<b>10.6%</b>

\*This report includes staff data from Nov. 1 to Oct. 31



## Staff Employee Statistical Totals: 2009 to 2010

	Ethnicity						Gender	
	NATIVE	ASIAN	BLACK	WHITE	HISPANIC	OTHER	MALE	FEMALE
Faculty								
Full Time	3	9	4	92	18	0	58	69
Part Time	4	10	7	312	42	6	206	175
Non-Credit Teaching	0	1	0	64	30	1	30	65
<i>Sub-Total:</i>	<b>7</b>	<b>20</b>	<b>11</b>	<b>468</b>	<b>90</b>	<b>7</b>	<b>294</b>	<b>309</b>
Classified								
Full Time Classified	3	5	7	128	58	0	68	133
Part Time Classified	0	1	0	8	2	0	5	6
<i>Sub-Total:</i>	<b>3</b>	<b>6</b>	<b>7</b>	<b>136</b>	<b>60</b>	<b>0</b>	<b>73</b>	<b>139</b>
Managerial	<b>0</b>	<b>1</b>	<b>1</b>	<b>23</b>	<b>6</b>	<b>0</b>	<b>16</b>	<b>15</b>
<b>Grand Total:</b>	<b>10</b>	<b>27</b>	<b>19</b>	<b>627</b>	<b>156</b>	<b>7</b>	<b>383</b>	<b>463</b>

PERCENT OF EMPLOYMENT CLASSIFICATION								
	NATIVE	ASIAN	BLACK	WHITE	HISPANIC	OTHER	MALE	FEMALE
Faculty								
Full Time	2.4%	7.1%	3.2%	73.0%	14.3%	0.0%	46.0%	54.8%
Part Time	1.0%	2.6%	1.8%	81.9%	11.0%	1.6%	54.1%	45.9%
Non-Credit Teaching	0.0%	1.0%	0.0%	66.7%	31.3%	1.0%	31.3%	67.7%
<i>Sub-Total:</i>	<b>1.2%</b>	<b>3.3%</b>	<b>1.8%</b>	<b>77.6%</b>	<b>14.9%</b>	<b>1.2%</b>	<b>48.8%</b>	<b>51.2%</b>
Classified								
Full Time Classified	1.5%	2.5%	3.5%	63.7%	28.9%	0.0%	33.8%	66.2%
Part Time Classified	0.0%	9.1%	0.0%	72.7%	18.2%	0.0%	45.5%	54.5%
<i>Sub-Total:</i>	<b>1.4%</b>	<b>2.8%</b>	<b>3.3%</b>	<b>64.2%</b>	<b>28.3%</b>	<b>0.0%</b>	<b>34.4%</b>	<b>65.6%</b>
Managerial	<b>0.0%</b>	<b>3.7%</b>	<b>5.3%</b>	<b>3.7%</b>	<b>3.8%</b>	<b>0.0%</b>	<b>4.2%</b>	<b>3.2%</b>
<b>Grand Total:</b>	<b>1.2%</b>	<b>3.2%</b>	<b>2.2%</b>	<b>74.1%</b>	<b>18.4%</b>	<b>0.8%</b>	<b>45.3%</b>	<b>54.7%</b>

\*This report includes staff data from Nov. 1 to Oct. 31

## Staff Employee Statistical Totals: 2009 to 2010

	NEW HIRES	Age				
		< 30	30-44	45-54	55-64	65 +
Faculty						
Full Time	18	0	6	9	3	0
Part Time	82	16	29	21	10	6
Non-Credit Teaching	16	8	4	3	1	0
<i>Faculty Sub-Total:</i>	<b>116</b>	<b>24</b>	<b>39</b>	<b>33</b>	<b>14</b>	<b>6</b>
Classified						
Full Time Classified	20	6	5	7	2	0
Part Time Classified	6	0	4	1	1	0
<i>Classified Sub-Total:</i>	<b>26</b>	<b>6</b>	<b>9</b>	<b>8</b>	<b>3</b>	<b>0</b>
Managerial	<b>3</b>	<b>0</b>	<b>0</b>	<b>0</b>	<b>3</b>	<b>0</b>
<b>Grand Total:</b>	<b>145</b>	<b>30</b>	<b>48</b>	<b>41</b>	<b>20</b>	<b>6</b>

PERCENT OF EMPLOYMENT CLASSIFICATION						
	% OF TOTAL	< 30	30-44	45-54	55-64	65 +
Faculty						
Full Time	12.4%	0.0%	33.3%	50.0%	16.7%	0.0%
Part Time	56.6%	19.5%	35.4%	25.6%	12.2%	7.3%
Non-Credit Teaching	11.0%	50.0%	25.0%	18.8%	6.3%	0.0%
<i>Faculty Sub-Total:</i>	<b>80.0%</b>	<b>20.7%</b>	<b>33.6%</b>	<b>28.4%</b>	<b>12.1%</b>	<b>5.2%</b>
Classified						
Full Time Classified	13.8%	30.0%	25.0%	35.0%	10.0%	0.0%
Part Time Classified	4.1%	0.0%	66.7%	16.7%	16.7%	0.0%
<i>Classified Sub-Total:</i>	<b>17.9%</b>	<b>23.1%</b>	<b>34.6%</b>	<b>30.8%</b>	<b>11.5%</b>	<b>0.0%</b>
Managerial	<b>2.1%</b>	<b>0.0%</b>	<b>0.0%</b>	<b>0.0%</b>	<b>15.0%</b>	<b>0.0%</b>
<b>Grand Total:</b>	<b>100.0%</b>	<b>20.7%</b>	<b>33.1%</b>	<b>28.3%</b>	<b>13.8%</b>	<b>4.1%</b>

\*This report includes staff data from Nov. 1 to Oct. 31

## Staff Employee Statistical Totals: 2009 to 2010

	Ethnicity						Gender	
	NATIVE	ASIAN	BLACK	WHITE	HISPANIC	OTHER	MALE	FEMALE
Faculty								
Full Time	0	3	0	12	2	1	7	11
Part Time	0	2	1	60	13	6	42	40
Non-Credit Teaching	0	1	0	9	6	0	3	13
<i>Faculty Sub-Total:</i>	<b>0</b>	<b>6</b>	<b>1</b>	<b>81</b>	<b>21</b>	<b>7</b>	<b>52</b>	<b>64</b>
Classified								
Full Time Classified	2	0	1	9	8	0	6	14
Part Time Classified	0	1	0	4	1	0	3	3
<i>Classified Sub-Total:</i>	<b>2</b>	<b>1</b>	<b>1</b>	<b>13</b>	<b>9</b>	<b>0</b>	<b>9</b>	<b>17</b>
Managerial	<b>0</b>	<b>0</b>	<b>0</b>	<b>3</b>	<b>0</b>	<b>0</b>	<b>1</b>	<b>2</b>
<b>Grand Total:</b>	<b>2</b>	<b>7</b>	<b>2</b>	<b>97</b>	<b>30</b>	<b>7</b>	<b>62</b>	<b>83</b>

PERCENT OF EMPLOYMENT CLASSIFICATION								
	NATIVE	ASIAN	BLACK	WHITE	HISPANIC	OTHER	MALE	FEMALE
Faculty								
Full Time	0.0%	16.7%	0.0%	66.7%	11.1%	5.6%	38.9%	61.1%
Part Time	0.0%	2.4%	1.2%	73.2%	15.9%	7.3%	51.2%	48.8%
Non-Credit Teaching	0.0%	6.3%	0.0%	56.3%	37.5%	0.0%	18.8%	81.3%
<i>Faculty Sub-Total:</i>	<b>0.0%</b>	<b>5.2%</b>	<b>0.9%</b>	<b>69.8%</b>	<b>18.1%</b>	<b>6.0%</b>	<b>44.8%</b>	<b>55.2%</b>
Classified								
Full Time Classified	10.0%	0.0%	5.0%	45.0%	40.0%	0.0%	30.0%	70.0%
Part Time Classified	0.0%	16.7%	0.0%	66.7%	16.7%	0.0%	50.0%	50.0%
<i>Classified Sub-Total:</i>	<b>7.7%</b>	<b>3.8%</b>	<b>3.8%</b>	<b>50.0%</b>	<b>34.6%</b>	<b>0.0%</b>	<b>34.6%</b>	<b>65.4%</b>
Managerial	<b>0.0%</b>	<b>0.0%</b>	<b>0.0%</b>	<b>3.1%</b>	<b>0.0%</b>	<b>0.0%</b>	<b>1.6%</b>	<b>2.4%</b>
<b>Grand Total:</b>	<b>1.4%</b>	<b>4.8%</b>	<b>1.4%</b>	<b>66.9%</b>	<b>20.7%</b>	<b>4.8%</b>	<b>42.8%</b>	<b>57.2%</b>

\*This report includes staff data from Nov. 1 to Oct. 31

## Staff Employee Statistical Totals: 2010 to 2011

	COUNT	NEW HIRES	Age				
			< 30	30-44	45-54	55-64	65 +
Faculty							
Full Time	122	14	2	32	43	40	5
Part Time	335	104	17	85	87	96	50
Non-Credit Teaching	82	19	3	16	14	30	19
<i>Sub-Total:</i>	<b>539</b>	<b>137</b>	<b>22</b>	<b>133</b>	<b>144</b>	<b>166</b>	<b>74</b>
Classified							
Full Time Classified	196	11	15	50	65	59	7
Part Time Classified	13	7	1	2	5	5	0
<i>Sub-Total:</i>	<b>209</b>	<b>18</b>	<b>16</b>	<b>52</b>	<b>70</b>	<b>64</b>	<b>7</b>
Managerial	<b>31</b>	<b>3</b>	<b>0</b>	<b>3</b>	<b>8</b>	<b>19</b>	<b>1</b>
<b>Grand Total:</b>	<b>779</b>	<b>158</b>	<b>38</b>	<b>188</b>	<b>222</b>	<b>249</b>	<b>82</b>

PERCENT OF EMPLOYMENT CLASSIFICATION							
	% OF TOTAL		< 30	30-44	45-54	55-64	65 +
Faculty							
Full Time	15.7%		1.6%	26.2%	35.2%	32.8%	4.1%
Part Time	43.0%		5.1%	25.4%	26.0%	28.7%	14.9%
Non-Credit Teaching	10.5%		3.7%	19.5%	17.1%	36.6%	23.2%
<i>Sub-Total:</i>	<b>69.2%</b>		<b>4.1%</b>	<b>24.7%</b>	<b>26.7%</b>	<b>30.8%</b>	<b>13.7%</b>
Classified							
Full Time Classified	25.2%		7.7%	25.5%	33.2%	30.1%	3.6%
Part Time Classified	1.7%		7.7%	15.4%	38.5%	38.5%	0.0%
<i>Sub-Total:</i>	<b>26.8%</b>		<b>7.7%</b>	<b>24.9%</b>	<b>33.5%</b>	<b>30.6%</b>	<b>3.3%</b>
Managerial	<b>4.0%</b>		<b>0.0%</b>	<b>1.6%</b>	<b>3.6%</b>	<b>7.6%</b>	<b>1.2%</b>
<b>Grand Total:</b>	<b>100.0%</b>		<b>4.9%</b>	<b>24.1%</b>	<b>28.5%</b>	<b>32.0%</b>	<b>10.5%</b>

\*This report includes staff data from Nov. 1 to Oct. 31

## Staff Employee Statistical Totals: 2010 to 2011

	Ethnicity						Gender	
	NATIVE	ASIAN	BLACK	WHITE	HISPANIC	OTHER	MALE	FEMALE
Faculty								
Full Time	3	7	3	89	19	1	54	68
Part Time	4	13	5	269	42	2	175	160
Non-Credit Teaching	0	0	1	55	25	1	29	53
<i>Sub-Total:</i>	<b>7</b>	<b>20</b>	<b>9</b>	<b>413</b>	<b>86</b>	<b>4</b>	<b>258</b>	<b>281</b>
Classified								
Full Time Classified	3	5	7	122	59	0	75	121
Part Time Classified	0	0	1	10	2	0	4	9
<i>Sub-Total:</i>	<b>3</b>	<b>5</b>	<b>8</b>	<b>132</b>	<b>61</b>	<b>0</b>	<b>79</b>	<b>130</b>
Managerial	<b>0</b>	<b>2</b>	<b>1</b>	<b>22</b>	<b>6</b>	<b>0</b>	<b>15</b>	<b>16</b>
<b>Grand Total:</b>	<b>10</b>	<b>27</b>	<b>18</b>	<b>567</b>	<b>153</b>	<b>4</b>	<b>352</b>	<b>427</b>

PERCENT OF EMPLOYMENT CLASSIFICATION								
	NATIVE	ASIAN	BLACK	WHITE	HISPANIC	OTHER	MALE	FEMALE
Faculty								
Full Time	2.5%	5.7%	2.5%	73.0%	15.6%	0.8%	44.3%	55.7%
Part Time	1.2%	3.9%	1.5%	80.3%	12.5%	0.6%	52.2%	47.8%
Non-Credit Teaching	0.0%	0.0%	1.2%	67.1%	30.5%	1.2%	35.4%	64.6%
<i>Sub-Total:</i>	<b>1.3%</b>	<b>3.7%</b>	<b>1.7%</b>	<b>76.6%</b>	<b>16.0%</b>	<b>0.7%</b>	<b>47.9%</b>	<b>52.1%</b>
Classified								
Full Time Classified	1.5%	2.6%	3.6%	62.2%	30.1%	0.0%	38.3%	61.7%
Part Time Classified	0.0%	0.0%	7.7%	76.9%	15.4%	0.0%	30.8%	69.2%
<i>Sub-Total:</i>	<b>1.4%</b>	<b>2.4%</b>	<b>3.8%</b>	<b>63.2%</b>	<b>29.2%</b>	<b>0.0%</b>	<b>37.8%</b>	<b>62.2%</b>
Managerial	<b>0.0%</b>	<b>7.4%</b>	<b>5.6%</b>	<b>3.9%</b>	<b>3.9%</b>	<b>0.0%</b>	<b>4.3%</b>	<b>3.7%</b>
<b>Grand Total:</b>	<b>1.3%</b>	<b>3.5%</b>	<b>2.3%</b>	<b>72.8%</b>	<b>19.6%</b>	<b>0.5%</b>	<b>45.2%</b>	<b>54.8%</b>

\*This report includes staff data from Nov. 1 to Oct. 31

## Staff Employee Statistical Totals: 2010 to 2011

	NEW HIRES	Age				
		< 30	30-44	45-54	55-64	65 +
Faculty						
Full Time	14	2	5	3	4	0
Part Time	104	14	42	20	19	9
Non-Credit Teaching	19	3	6	5	4	1
<i>Faculty Sub-Total:</i>	137	19	53	28	27	10
Classified						
Full Time Classified	11	2	7	1	1	0
Part Time Classified	7	1	2	2	2	0
<i>Classified Sub-Total:</i>	18	3	9	3	3	0
Managerial	3	0	0	0	3	0
<b>Grand Total:</b>	<b>158</b>	<b>22</b>	<b>62</b>	<b>31</b>	<b>33</b>	<b>10</b>

PERCENT OF EMPLOYMENT CLASSIFICATION						
	% OF TOTAL	< 30	30-44	45-54	55-64	65 +
Faculty						
Full Time	8.9%	14.3%	35.7%	21.4%	28.6%	0.0%
Part Time	65.8%	13.5%	40.4%	19.2%	18.3%	8.7%
Non-Credit Teaching	12.0%	15.8%	31.6%	26.3%	21.1%	5.3%
<i>Faculty Sub-Total:</i>	86.7%	13.9%	38.7%	20.4%	19.7%	7.3%
Classified						
Full Time Classified	7.0%	18.2%	63.6%	9.1%	9.1%	0.0%
Part Time Classified	4.4%	14.3%	28.6%	28.6%	28.6%	0.0%
<i>Classified Sub-Total:</i>	11.4%	16.7%	50.0%	16.7%	16.7%	0.0%
Managerial	1.9%	0.0%	0.0%	0.0%	9.1%	0.0%
<b>Grand Total:</b>	<b>100.0%</b>	<b>13.9%</b>	<b>39.2%</b>	<b>19.6%</b>	<b>20.9%</b>	<b>6.3%</b>

\*This report includes staff data from Nov. 1 to Oct. 31

## Staff Employee Statistical Totals: 2010 to 2011

	Ethnicity						Gender	
	NATIVE	ASIAN	BLACK	WHITE	HISPANIC	OTHER	MALE	FEMALE
Faculty								
Full Time	0	0	0	11	2	1	7	7
Part Time	1	5	1	74	22	1	49	55
Non-Credit Teaching	0	0	1	11	6	1	5	14
<i>Faculty Sub-Total:</i>	1	5	2	96	30	3	61	76
Classified								
Full Time Classified	0	0	1	5	5	0	7	4
Part Time Classified	0	0	1	5	1	0	2	5
<i>Classified Sub-Total:</i>	0	0	2	10	6	0	9	9
Managerial	0	1	0	1	1	0	1	2
<b>Grand Total:</b>	<b>1</b>	<b>6</b>	<b>4</b>	<b>107</b>	<b>37</b>	<b>3</b>	<b>71</b>	<b>87</b>

PERCENT OF EMPLOYMENT CLASSIFICATION								
	NATIVE	ASIAN	BLACK	WHITE	HISPANIC	OTHER	MALE	FEMALE
Faculty								
Full Time	0.0%	0.0%	0.0%	78.6%	14.3%	7.1%	50.0%	50.0%
Part Time	1.0%	4.8%	1.0%	71.2%	21.2%	1.0%	47.1%	52.9%
Non-Credit Teaching	0.0%	0.0%	5.3%	57.9%	31.6%	5.3%	26.3%	73.7%
<i>Faculty Sub-Total:</i>	0.7%	3.6%	1.5%	70.1%	21.9%	2.2%	44.5%	55.5%
Classified								
Full Time Classified	0.0%	0.0%	9.1%	45.5%	45.5%	0.0%	63.6%	36.4%
Part Time Classified	0.0%	0.0%	14.3%	71.4%	14.3%	0.0%	28.6%	71.4%
<i>Classified Sub-Total:</i>	0.0%	0.0%	11.1%	55.6%	33.3%	0.0%	50.0%	50.0%
Managerial	0.0%	16.7%	0.0%	0.9%	2.7%	0.0%	1.4%	2.3%
<b>Grand Total:</b>	<b>0.6%</b>	<b>3.8%</b>	<b>2.5%</b>	<b>67.7%</b>	<b>23.4%</b>	<b>1.9%</b>	<b>44.9%</b>	<b>55.1%</b>

\*This report includes staff data from Nov. 1 to Oct. 31