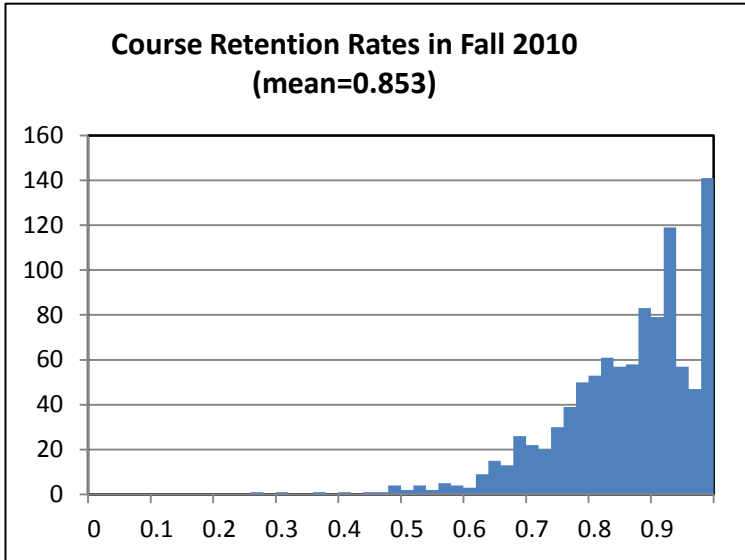


## ***11. Key Performance Indicators***

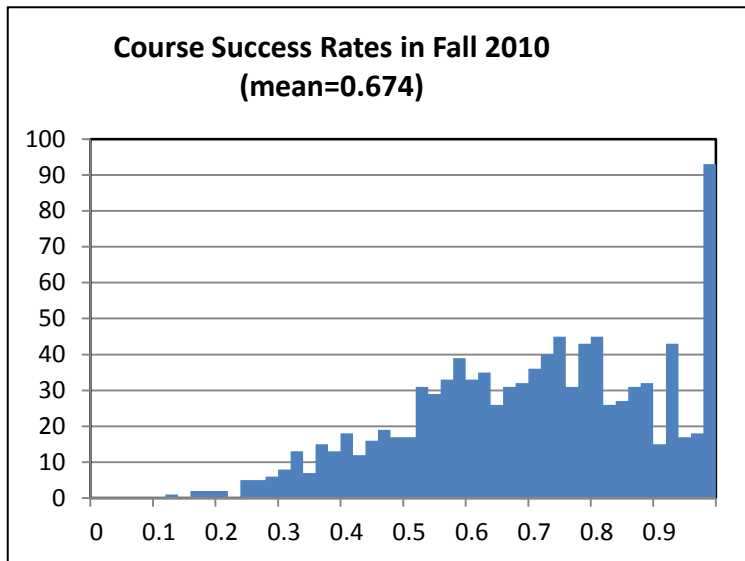
<b><i>Topic</i></b>	<b><i>Page</i></b>
<i>Retention and Success Rates</i>	<i>11-2</i>
<i>Statewide vs AHC Comparison of Retention and Success Rates</i>	<i>11-3</i>
<i>Retention and Success Rates by Discipline</i>	<i>11-5</i>
<i>Fall to Spring Persistence</i>	<i>11-15</i>
<i>Degrees and Certificates</i>	<i>11-16</i>
<i>Student Right-to-Know Completion and Transfer Rates</i>	<i>11-20</i>
<i>Transfers to UC and CSU</i>	<i>11-21</i>
<i>Performance and Persistence of Transfer Students to AHC</i>	<i>11-24</i>
<i>Basic Skills Enrollment and Performance Indicators</i>	<i>11-25</i>

## Retention and Success

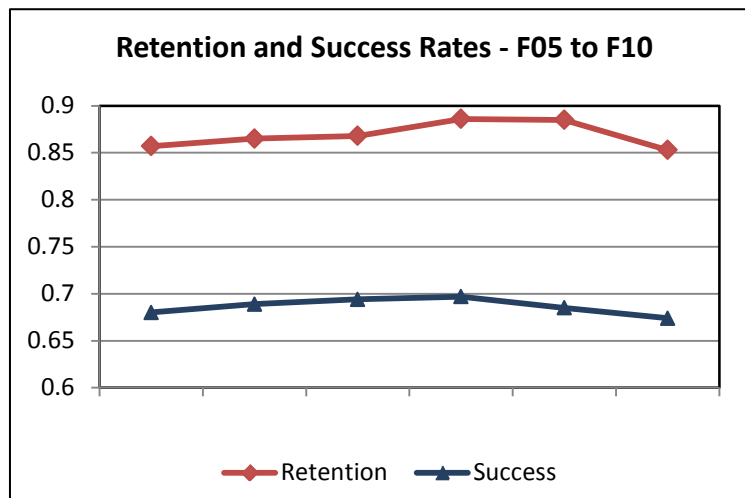
Retention and success rates are a measure of academic performance.



Retention rates are the sum of course enrollments receiving an official end of term letter grade of A, B, C, D, F\*, CR, NC, I\*, P, or NP divided by course enrollment. Courses with an enrollment of 10 or less were excluded in the histogram.



Successful course completion rates are the sum of course enrollments receiving an official end of term letter grade of A, B, C, CR, or P, divided by course enrollment. Courses with an enrollment of 10 or less were excluded in the histogram.



Term	Enrollment
Fall 2005	27873
Fall 2006	27137
Fall 2007	28467
Fall 2008	30223
Fall 2009	29912
Fall 2010	32335

## Statewide vs AHC Comparison of Retention and Success Rates

### Retention Rates

		Statewide		AHC		Difference	
Gender		Fall 2009	Fall 2010	Fall 2009	Fall 2010	Fall 2009	Fall 2010
Female	Enrollment	2322024	2270560	16126	17099		
	Retention	85%	85%	89%	85%	4.2%	0.3%
Male	Enrollment	2002849	1988092	13583	15043		
	Retention	85%	85%	88%	86%	3.3%	0.6%
TOTAL	Enrollment	4324873	4258652	29912	32335		
	Retention	85%	85%	89%	85%	3.8%	0.4%

		Statewide		AHC		Difference	
Ethnicity		Fall 2009	Fall 2010	Fall 2009	Fall 2010	Fall 2009	Fall 2010
African-American	Enrollment	342674	348913	1030	890		
	Retention	79%	79%	87%	83%	7.6%	3.7%
American Indian	Enrollment	33992	28315	281	437		
	Retention	82%	83%	89%	76%	6.5%	-6.5%
Asian	Enrollment	619065	617751	1351	1618		
	Retention	86%	86%	89%	87%	3.1%	0.1%
Hispanic	Enrollment	1354593	1475447	12844	13744		
	Retention	83%	84%	87%	84%	3.6%	0.5%
Multi-Ethnicity	Enrollment	56476	105675	505	388		
	Retention	83%	83%	89%	87%	6.3%	3.6%
Pacific Islander	Enrollment	35301	29309	69	227		
	Retention	82%	82%	97%	82%	14.8%	-0.1%
Unknown	Enrollment	548018	314373	2193	1493		
	Retention	85%	85%	90%	88%	4.5%	2.7%
White	Enrollment	1427135	1417488	11639	13538		
	Retention	86%	86%	90%	86%	3.9%	0.2%
Total	Enrollment	4417254	4337271	29912	32335		
	Retention	84%	85%	89%	85%	4.0%	0.7%

Historically, AHC had higher retention rates than the statewide average. However, the difference in retention rates between AHC and statewide numbers shrank to nearly 0 in Fall 2010. Hopefully, this trend will be reversed in the coming years.

The retention rate measures how well an institution is performing in retaining students in the learning process to completion of the course, regardless of the achievement level of students. A high retention rate may reflect, among other factors, a high level of student satisfaction with the instructional material and the absence of personal problems which interfere with college attendance.

## Statewide vs AHC Comparison of Retention and Success Rates

### Success Rates

		Statewide		AHC		Difference	
Gender		Fall 2009	Fall 2010	Fall 2009	Fall 2010	Fall 2009	Fall 2010
Female	Enrollment	2348637	2290566	16126	17099		
	Success	68%	69%	70%	68%	2.3%	-1.1%
Male	Enrollment	2027778	2006285	13583	15043		
	Success	66%	67%	67%	67%	0.5%	-0.3%
TOTAL	Enrollment	4417254	4337271	29912	32335		
	Success	67%	68%	68%	67%	1.5%	-0.7%

		Statewide		AHC		Difference	
Ethnicity		Fall 2009	Fall 2010	Fall 2009	Fall 2010	Fall 2009	Fall 2010
African-American	Enrollment	342674	348913	1030	890		
	Success	54%	55%	58%	60%	4.0%	5.3%
American Indian	Enrollment	33992	28315	281	437		
	Success	63%	64%	65%	53%	1.9%	-11.6%
Asian	Enrollment	619065	617751	1351	1618		
	Success	73%	74%	73%	72%	-0.2%	-2.2%
Hispanic	Enrollment	1354593	1475447	12844	13744		
	Success	63%	64%	64%	64%	1.6%	-0.8%
Multi-Ethnicity	Enrollment	56476	105675	505	388		
	Success	63%	64%	64%	60%	0.7%	-4.4%
Pacific Islander	Enrollment	35301	29309	69	227		
	Success	62%	63%	67%	64%	4.6%	1.1%
Unknown	Enrollment	548018	314373	2193	1493		
	Success	68%	71%	74%	75%	5.6%	4.3%
White	Enrollment	1427135	1417488	11639	13538		
	Success	71%	73%	73%	71%	1.3%	-1.5%
Total	Enrollment	4417254	4337271	29912	32335		
	Success	67%	68%	68%	67%	1.5%	-0.7%

Historically, AHC success rates were higher than the statewide average across all ethnic, gender, and age groups. However, this trend reversed in Fall 2010.

## Retention and Success Rates by Discipline

Discipline	Fall 2005	Fall 2006	Fall 2007	Fall 2008	Fall 2009	Fall 2010
------------	-----------	-----------	-----------	-----------	-----------	-----------

### Applied Social Sciences - BAS

Administration of Justice (AJ)	# sections	15	11	11	12	12	13
	enrollment	289	269	229	344	407	558
	retention	0.93	0.91	0.89	0.92	0.89	0.92
	success rate	0.81	0.77	0.80	0.80	0.75	0.78

Culinary Arts (CA)	# sections				6	7
	enrollment				122	127
	retention				0.93	0.92
	success rate				0.72	0.86

Early Childhood Studies (ECS)	# sections	49	45	39	45	38	35
	enrollment	787	873	818	920	1013	896
	retention	0.93	0.93	0.92	0.93	0.91	0.87
	success rate	0.81	0.82	0.78	0.77	0.72	0.73

Education (EDUC)	# sections	1	1	1	2	2
	enrollment	18	20	18	37	27
	retention	0.83	0.95	1.00	0.89	0.93
	success rate	0.56	0.75	0.89	0.81	0.70

Family & Consumer Science (FCS)	# sections	22	22	25	23	5	6
	enrollment	361	347	401	488	114	132
	retention	0.83	0.88	0.88	0.88	0.88	0.85
	success rate	0.73	0.72	0.72	0.75	0.73	0.67

Food Science & Nutrition (FSN)	# sections				7	12
	enrollment				186	235
	retention				0.87	0.81
	success rate				0.67	0.69

Human Services (HUSV)	# sections	20	20	24	22	27	15
	enrollment	272	260	364	288	459	312
	retention	0.90	0.84	0.85	0.92	0.88	0.86
	success rate	0.72	0.65	0.70	0.71	0.68	0.71

### Business - BBU

Accounting (ACCT)	# sections	15	16	17	17	15	14
	enrollment	340	399	375	433	389	368
	retention	0.78	0.83	0.79	0.79	0.85	0.77
	success rate	0.62	0.54	0.58	0.58	0.60	0.56

## Retention and Success Rates by Discipline

Discipline		Fall 2005	Fall 2006	Fall 2007	Fall 2008	Fall 2009	Fall 2010
Business (BUS)	# sections	52	35	39	37	33	26
	enrollment	1162	780	766	968	869	838
	retention	0.91	0.84	0.83	0.89	0.83	0.83
	success rate	0.76	0.63	0.65	0.72	0.69	0.60
Business Information Systems (CBIS)	# sections	31	30	33	23	24	26
	enrollment	490	450	453	461	495	449
	retention	0.80	0.81	0.85	0.81	0.80	0.76
	success rate	0.54	0.57	0.53	0.53	0.53	0.51
Business Office Technology (CBOT)	# sections	37	47	42	21	21	20
	enrollment	402	488	478	470	578	435
	retention	0.71	0.75	0.74	0.75	0.72	0.75
	success rate	0.45	0.52	0.51	0.54	0.50	0.51
Cooperative Work Experience (CWE)	# sections	13	17	15	14	9	6
	enrollment	32	43	42	44	79	76
	retention	0.72	0.63	0.81	0.95	0.75	0.84
	success rate	0.50	0.37	0.57	0.55	0.57	0.74
Real Estate (RE)	# sections	8	8	5	2	1	1
	enrollment	222	161	107	25	23	29
	retention	0.90	0.84	0.89	0.92	0.96	0.90
	success rate	0.72	0.64	0.57	0.88	0.70	0.59
<b>Cosmetology - BCS</b>							
Cosmetology (COS)	# sections	18	32	26	31	27	18
	enrollment	223	405	271	403	360	324
	retention	0.96	0.97	0.96	0.95	0.96	0.93
	success rate	0.82	0.65	0.88	0.86	0.66	0.84
<b>Counseling - BCO</b>							
Leadership (LDER)	# sections	1	1	2	2	2	2
	enrollment	15	12	19	23	43	29
	retention	0.93	1.00	0.79	0.96	0.93	0.86
	success rate	0.93	0.75	0.63	0.70	0.72	0.83
Personal Development (PD)	# sections	12	16	17	16	13	16
	enrollment	350	319	393	473	409	496
	retention	0.86	0.90	0.82	0.86	0.87	0.86
	success rate	0.56	0.64	0.55	0.63	0.64	0.62

## Retention and Success Rates by Discipline

Discipline		Fall 2005	Fall 2006	Fall 2007	Fall 2008	Fall 2009	Fall 2010
<b>English - BLA</b>							
English (ENGL)	# sections	102	94	99	88	78	82
	enrollment	2314	2222	2316	2378	2208	2434
	retention	0.81	0.81	0.84	0.87	0.87	0.82
	success rate	0.60	0.58	0.61	0.66	0.64	0.61
Reading (READ)	# sections	7	6	6	6	6	8
	enrollment	137	120	141	122	140	164
	retention	0.84	0.87	0.84	0.92	0.79	0.80
	success rate	0.50	0.48	0.48	0.53	0.66	0.66
<b>Fine Arts - BFA</b>							
Art (ART)	# sections	47	46	50	53	46	49
	enrollment	916	866	878	1017	1010	1058
	retention	0.87	0.86	0.86	0.90	0.91	0.90
	success rate	0.69	0.72	0.71	0.72	0.75	0.74
Dance (DANC)	# sections	40	37	40	35	23	23
	enrollment	872	743	753	711	516	615
	retention	0.90	0.88	0.92	0.92	0.94	0.86
	success rate	0.74	0.70	0.74	0.74	0.82	0.74
Drama (DRMA)	# sections	22	26	22	16	15	18
	enrollment	389	344	393	392	436	475
	retention	0.96	0.95	0.99	0.99	0.96	0.95
	success rate	0.92	0.90	0.95	0.96	0.91	0.90
Film (FILM)	# sections	27	20	31	22	21	22
	enrollment	390	321	467	473	370	401
	retention	0.86	0.93	0.91	0.93	0.92	0.86
	success rate	0.71	0.81	0.74	0.74	0.72	0.71
Graphics (GRPH)	# sections	7	10	5	10	4	7
	enrollment	87	166	104	164	71	138
	retention	0.91	0.93	0.93	0.91	0.97	0.88
	success rate	0.79	0.82	0.71	0.75	0.79	0.80
Multimedia Arts & Communicatio (MMAC)	# sections	3	5	3	11	6	8
	enrollment	39	56	52	69	67	105
	retention	0.87	0.96	0.88	0.97	0.90	0.86
	success rate	0.77	0.82	0.77	0.84	0.78	0.79

## Retention and Success Rates by Discipline

Discipline	Fall 2005	Fall 2006	Fall 2007	Fall 2008	Fall 2009	Fall 2010
------------	-----------	-----------	-----------	-----------	-----------	-----------

Music (MUS)	# sections	35	38	38	40	29	40
	enrollment	621	515	457	567	653	653
	retention	0.83	0.85	0.87	0.83	0.86	0.80
	success rate	0.66	0.64	0.70	0.65	0.58	0.59

Photography (PHTO)	# sections	18	19	19	17	15	9
	enrollment	207	245	239	210	196	137
	retention	0.88	0.87	0.87	0.93	0.90	0.91
	success rate	0.81	0.79	0.77	0.82	0.86	0.82

### Health Sciences - BHS

Dental Assisting (DA)	# sections	6	6	6	7	6	6
	enrollment	116	96	86	128	145	154
	retention	0.97	0.97	0.95	0.99	0.99	1.00
	success rate	0.94	0.93	0.90	0.89	0.90	0.99

Medical Assisting (MA)	# sections	7	10	19	10	8	6
	enrollment	177	157	281	209	195	168
	retention	0.82	0.85	0.90	0.88	0.93	0.95
	success rate	0.74	0.82	0.79	0.73	0.77	0.93

Nursing (NURS)	# sections	23	18	18	19	16	16
	enrollment	538	469	545	627	484	461
	retention	0.96	0.99	0.98	1.00	0.97	0.98
	success rate	0.94	0.99	0.97	0.99	0.96	0.97

### Industrial Technology - BIT

Apprenticeship Training (APRN)	# sections	5	5	5	5	5	5
	enrollment	87	90	78	73	63	57
	retention	1.00	1.00	1.00	0.99	1.00	1.00
	success rate	0.92	0.88	0.94	0.95	0.92	0.96

Architecture (ARCH)	# sections	5	5	8	6	5	5
	enrollment	80	71	120	98	94	85
	retention	0.93	0.87	0.86	0.92	0.94	0.80
	success rate	0.74	0.75	0.73	0.76	0.79	0.69

Auto Body (AB)	# sections	8	7	7	6	7	13
	enrollment	82	80	90	83	89	133
	retention	0.87	0.95	0.86	0.90	0.90	0.93
	success rate	0.78	0.85	0.72	0.88	0.83	0.79



## Retention and Success Rates by Discipline

Discipline		Fall 2005	Fall 2006	Fall 2007	Fall 2008	Fall 2009	Fall 2010
Automotive Technology (AT)	# sections	9	11	10	11	15	12
	enrollment	182	199	213	208	253	276
	retention	0.86	0.80	0.79	0.83	0.87	0.86
	success rate	0.67	0.68	0.71	0.73	0.81	0.76
Computer Electronics (CEL)	# sections		1		2	3	3
	enrollment		14		7	24	24
	retention		1.00		1.00	0.96	1.00
	success rate		0.71		1.00	0.75	0.75
Computer Science (CS)	# sections						4
	enrollment						50
	retention						0.94
	success rate						0.76
Electronics (EL)	# sections	9	23	19	19	12	4
	enrollment	70	148	97	179	106	35
	retention	0.97	0.87	0.88	0.93	0.88	0.63
	success rate	0.57	0.66	0.51	0.66	0.71	0.51
Engineering Technology (ET)	# sections	3	4	2	4	2	2
	enrollment	31	54	35	27	49	48
	retention	1.00	0.85	0.91	0.93	0.94	0.90
	success rate	0.94	0.76	0.80	0.63	0.80	0.85
Machine Technology (MT)	# sections	4	5	4	2	2	5
	enrollment	18	23	25	16	22	90
	retention	0.94	0.87	0.92	1.00	0.82	0.83
	success rate	0.83	0.78	0.84	0.88	0.77	0.77
Welding Technology (WLDT)	# sections	17	18	16	12	9	11
	enrollment	172	198	140	134	144	191
	retention	0.94	0.89	0.81	0.96	0.91	0.93
	success rate	0.81	0.75	0.74	0.81	0.80	0.80
<b>Kinesiology, Rec &amp; Athletics - BPE</b>							
Athletic Training (ATH)	# sections					1	1
	enrollment					33	36
	retention					0.91	0.92
	success rate					0.85	0.78
Health Education (HED)	# sections	17	16	16	15	16	17
	enrollment	554	559	681	641	714	809
	retention	0.90	0.89	0.92	0.93	0.94	0.90
	success rate	0.73	0.74	0.75	0.78	0.75	0.73

Source: CCCC MIS data

<https://misweb.cccco.edu/dataondemand/>

Key Performance Indicators, 11-9

## Retention and Success Rates by Discipline

Discipline		Fall 2005	Fall 2006	Fall 2007	Fall 2008	Fall 2009	Fall 2010
Intercollegiate Athletics (PEIA)	# sections	9	7	8	7	8	8
	enrollment	182	168	155	188	201	184
	retention	0.94	0.95	0.99	0.96	0.98	0.90
	success rate	0.91	0.91	0.96	0.95	0.96	0.88
Physical Education (PE)	# sections	61	61	53	46	43	29
	enrollment	1390	1236	1383	1427	1447	1154
	retention	0.86	0.87	0.88	0.89	0.89	0.84
	success rate	0.67	0.69	0.64	0.63	0.59	0.60
Recreation (REC)	# sections					3	4
	enrollment					115	135
	retention					0.92	0.92
	success rate					0.90	0.88
<b>Languages and Communication - BLC</b>							
American Sign Language (ASL)	# sections	3	3	2	2	1	3
	enrollment	83	81	56	59	37	81
	retention	0.84	0.81	0.89	0.86	0.89	0.86
	success rate	0.71	0.73	0.68	0.61	0.76	0.59
English as a Second Language (ESL)	# sections	20	18	26	21	17	16
	enrollment	278	235	355	260	239	225
	retention	0.90	0.88	0.93	0.90	0.94	0.91
	success rate	0.68	0.66	0.77	0.70	0.81	0.74
French (FRCH)	# sections	2	3	3	2	1	1
	enrollment	29	57	46	43	27	31
	retention	0.72	0.79	0.74	0.79	0.93	0.81
	success rate	0.66	0.75	0.67	0.67	0.81	0.68
Interdisciplinary Studies (IDST)	# sections		1	2			
	enrollment		16	30			
	retention		0.81	0.87			
	success rate		0.50	0.63			
Italian (ITAL)	# sections	5	4	6	3	2	2
	enrollment	89	59	83	66	52	69
	retention	0.64	0.71	0.64	0.56	0.58	0.42
	success rate	0.48	0.51	0.45	0.35	0.52	0.32
Latin (LATN)	# sections					1	1
	enrollment					20	21
	retention					1.00	0.90
	success rate					0.95	0.86

## Retention and Success Rates by Discipline

Discipline		Fall 2005	Fall 2006	Fall 2007	Fall 2008	Fall 2009	Fall 2010
Spanish (SPAN)	# sections	13	15	15	12	14	13
	enrollment	329	329	339	311	354	359
	retention	0.79	0.71	0.72	0.83	0.87	0.79
	success rate	0.65	0.57	0.61	0.67	0.69	0.64
Speech Communication (SPCH)	# sections	28	28	27	28	26	28
	enrollment	606	568	597	680	666	805
	retention	0.89	0.94	0.88	0.91	0.91	0.90
	success rate	0.78	0.83	0.77	0.81	0.79	0.78
<b>LAP - CLA</b>							
Learning Skills (LS)	# sections	9	6	4	5	2	3
	enrollment	134	107	70	91	47	28
	retention	0.84	0.86	0.83	0.91	0.87	0.89
	success rate	0.72	0.82	0.73	0.73	0.74	0.79
<b>Life &amp; Physical Sciences - BLP</b>							
Agribusiness (AG)	# sections	15	9	14	14	9	14
	enrollment	124	102	139	186	195	300
	retention	0.89	0.88	0.88	0.95	0.97	0.83
	success rate	0.81	0.75	0.76	0.80	0.85	0.75
Astronomy (ASTR)	# sections	5	5	5	3	3	3
	enrollment	206	214	163	182	261	243
	retention	0.78	0.78	0.81	0.94	0.87	0.89
	success rate	0.62	0.61	0.68	0.85	0.64	0.68
Biology (BIOL)	# sections	28	31	30	32	34	33
	enrollment	659	724	710	761	843	969
	retention	0.87	0.84	0.80	0.81	0.83	0.79
	success rate	0.76	0.71	0.67	0.68	0.67	0.63
Chemistry (CHEM)	# sections	16	17	16	14	13	14
	enrollment	312	332	329	340	341	422
	retention	0.81	0.92	0.87	0.89	0.90	0.87
	success rate	0.66	0.79	0.72	0.67	0.68	0.68
Environmental Studies (ENVS)	# sections	6	3	4	3	2	2
	enrollment	99	40	55	60	32	33
	retention	0.91	0.75	0.84	0.78	0.97	0.94
	success rate	0.66	0.58	0.69	0.58	0.81	0.85

## Retention and Success Rates by Discipline

Discipline	Fall 2005	Fall 2006	Fall 2007	Fall 2008	Fall 2009	Fall 2010
------------	-----------	-----------	-----------	-----------	-----------	-----------

Geology (GEOL)	# sections	3	4	4	3	2	3
	enrollment	51	66	70	56	60	71
	retention	0.82	0.88	0.76	0.93	0.87	0.80
	success rate	0.67	0.80	0.66	0.71	0.72	0.68

Physical Science (PHSC)	# sections	6	4	4	2	3	2
	enrollment	51	54	50	20	62	51
	retention	0.92	0.81	0.96	0.95	1.00	0.92
	success rate	0.82	0.63	0.90	0.70	0.94	0.82

Physics (PHYS)	# sections	6	8	9	8	7	8
	enrollment	125	151	149	150	171	198
	retention	0.86	0.90	0.89	0.85	0.85	0.82
	success rate	0.74	0.82	0.72	0.69	0.70	0.66

### LRC - Library - BLR

Library Skills (LBRY)	# sections	1	1	1	1	1
	enrollment	38	21	22	14	24
	retention	0.79	0.86	0.64	0.86	0.58
	success rate	0.63	0.52	0.55	0.50	0.54

### Mathematical Sciences - BMS

Computer Science (CS)	# sections	25	11	19	12	16	6
	enrollment	262	136	203	202	259	213
	retention	0.83	0.82	0.83	0.87	0.88	0.89
	success rate	0.53	0.57	0.61	0.64	0.75	0.78

Engineering (ENGR)	# sections	6	8	6	6	5	5
	enrollment	109	129	100	114	121	131
	retention	0.84	0.87	0.85	0.91	0.90	0.90
	success rate	0.79	0.83	0.80	0.76	0.73	0.73

Mathematics (MATH)	# sections	100	97	105	100	93	93
	enrollment	2583	2529	2678	2807	2753	2963
	retention	0.78	0.82	0.82	0.86	0.86	0.83
	success rate	0.58	0.57	0.61	0.63	0.61	0.60

### Public Safety - BFS

Emergency Medical Services (EMS)	# sections	15	18	29	20	17	21
	enrollment	333	418	487	436	455	506
	retention	0.94	0.98	0.94	0.97	0.95	0.88
	success rate	0.66	0.83	0.77	0.80	0.74	0.74

## Retention and Success Rates by Discipline

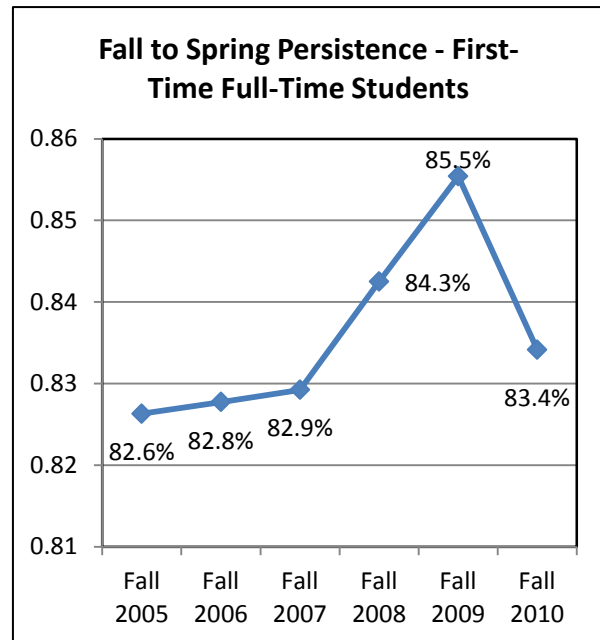
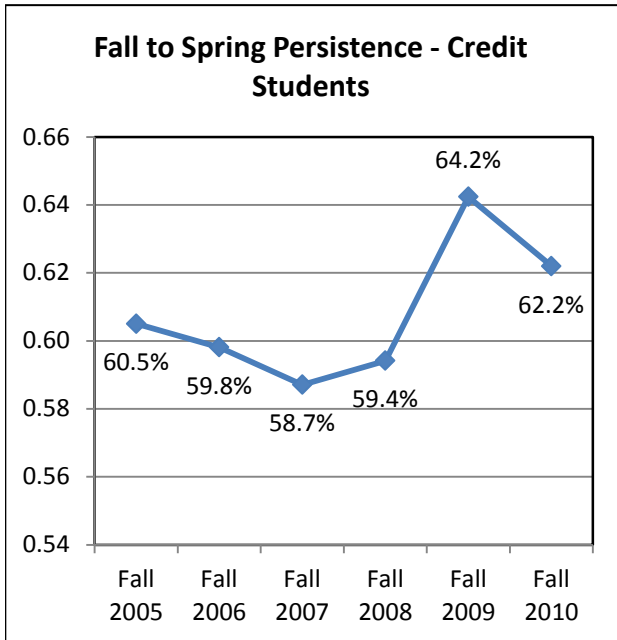
Discipline		Fall 2005	Fall 2006	Fall 2007	Fall 2008	Fall 2009	Fall 2010
Environmental Technology (ENVT)	# sections	10	12	17	8	6	6
	enrollment	162	253	232	222	176	153
	retention	1.00	1.00	0.99	1.00	1.00	0.97
	success rate	0.93	0.94	0.91	0.94	0.95	0.94
Fire Technology (FT)	# sections	19	26	21	25	21	28
	enrollment	700	685	924	1164	1126	1174
	retention	0.84	0.93	0.91	0.92	0.89	0.86
	success rate	0.65	0.83	0.78	0.76	0.69	0.67
Law Enforcement (LE)	# sections	43	28	34	31	18	56
	enrollment	541	423	570	473	280	774
	retention	0.99	0.99	0.98	0.99	0.92	0.97
	success rate	0.81	0.97	0.96	0.98	0.90	0.96
Wildland Fire Technology (WFT)	# sections	7	7	3	6	2	3
	enrollment	61	69	21	52	32	52
	retention	0.93	0.96	0.81	0.92	0.81	0.87
	success rate	0.52	0.86	0.57	0.79	0.44	0.35
Wildland Fire Technology Opera (WFTO)	# sections	4	8	5	4	6	3
	enrollment	65	262	161	76	139	85
	retention	1.00	0.99	1.00	1.00	1.00	1.00
	success rate	0.35	0.99	1.00	1.00	1.00	1.00
<b>Social &amp; Behavioral Sciences - BSS</b>							
Anthropology (ANTH)	# sections	13	16	18	14	14	19
	enrollment	390	407	426	518	584	822
	retention	0.76	0.72	0.78	0.77	0.83	0.73
	success rate	0.61	0.56	0.58	0.50	0.63	0.50
Economics (ECON)	# sections	20	13	16	12	7	19
	enrollment	460	391	397	362	247	577
	retention	0.85	0.87	0.87	0.88	0.90	0.82
	success rate	0.60	0.60	0.60	0.60	0.72	0.59
Geography (GEOG)	# sections	6	7	7	7	6	8
	enrollment	148	159	194	249	225	284
	retention	0.83	0.85	0.85	0.90	0.81	0.86
	success rate	0.68	0.60	0.60	0.80	0.55	0.55
History (HIST)	# sections	47	38	46	35	44	41
	enrollment	1397	1175	1448	1423	1941	1812
	retention	0.85	0.84	0.87	0.87	0.90	0.87
	success rate	0.59	0.60	0.61	0.58	0.57	0.59

## Retention and Success Rates by Discipline

Discipline		Fall 2005	Fall 2006	Fall 2007	Fall 2008	Fall 2009	Fall 2010
Humanities (HUM)	# sections		7		8		2
	enrollment		119		133		82
	retention		0.90		0.95		0.73
	success rate		0.66		0.74		0.46
International Studies (IS)	# sections				1	3	
	enrollment				1	45	
	retention				1.00	0.89	
	success rate				0.00	0.60	
Philosophy (PHIL)	# sections	19	19	18	19	14	16
	enrollment	540	478	502	612	580	599
	retention	0.84	0.85	0.88	0.90	0.90	0.88
	success rate	0.68	0.67	0.75	0.70	0.69	0.71
Political Science (POLS)	# sections	21	19	18	15	12	14
	enrollment	558	504	489	509	488	576
	retention	0.84	0.84	0.85	0.88	0.90	0.85
	success rate	0.73	0.75	0.71	0.69	0.70	0.71
Psychology (PSY)	# sections	33	38	38	40	30	40
	enrollment	1097	1190	1301	1404	1042	1409
	retention	0.85	0.89	0.89	0.85	0.89	0.85
	success rate	0.66	0.67	0.71	0.54	0.63	0.59
Sociology (SOC)	# sections	23	22	21	22	14	17
	enrollment	678	651	595	654	530	619
	retention	0.84	0.83	0.79	0.85	0.85	0.77
	success rate	0.60	0.62	0.58	0.57	0.61	0.56

## Fall to Spring Persistence

Fall to Spring Persistence is a measure of academic performance. Persistence in this report measures the percentage of students enrolled in the fall semester that return in the subsequent spring.



### Fall 2010 to Spring 2011 Persistence

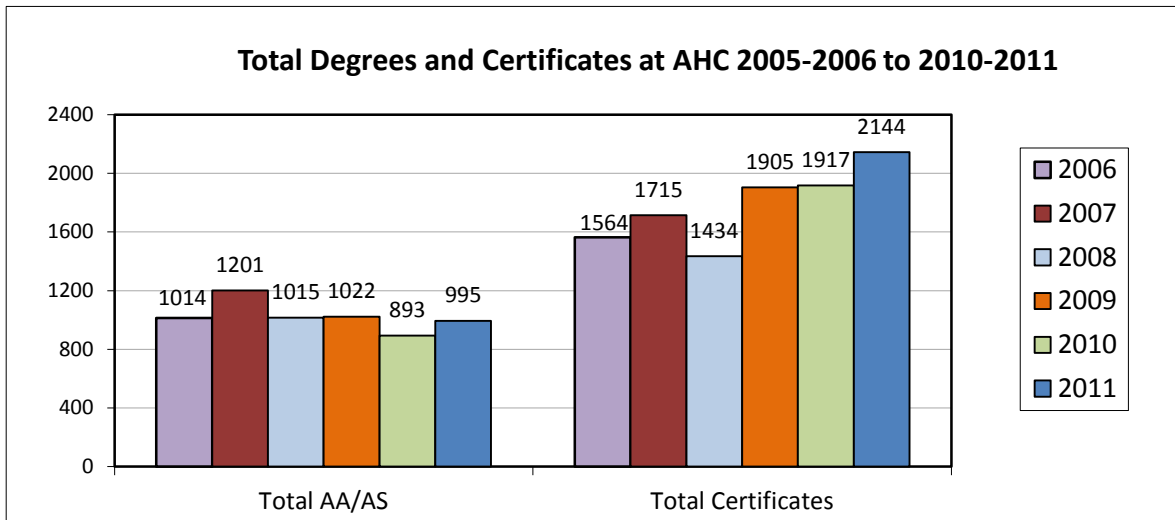
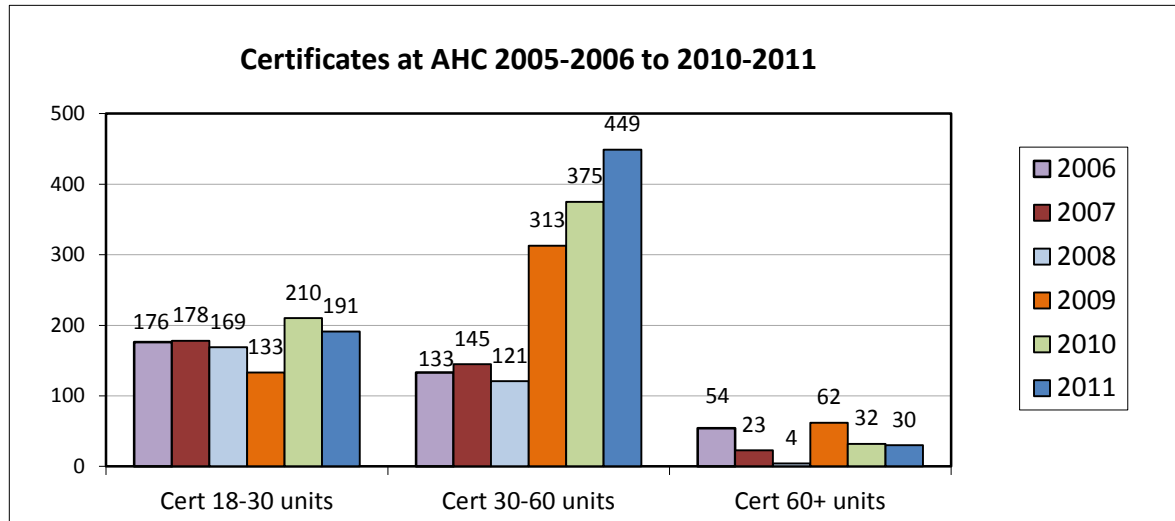
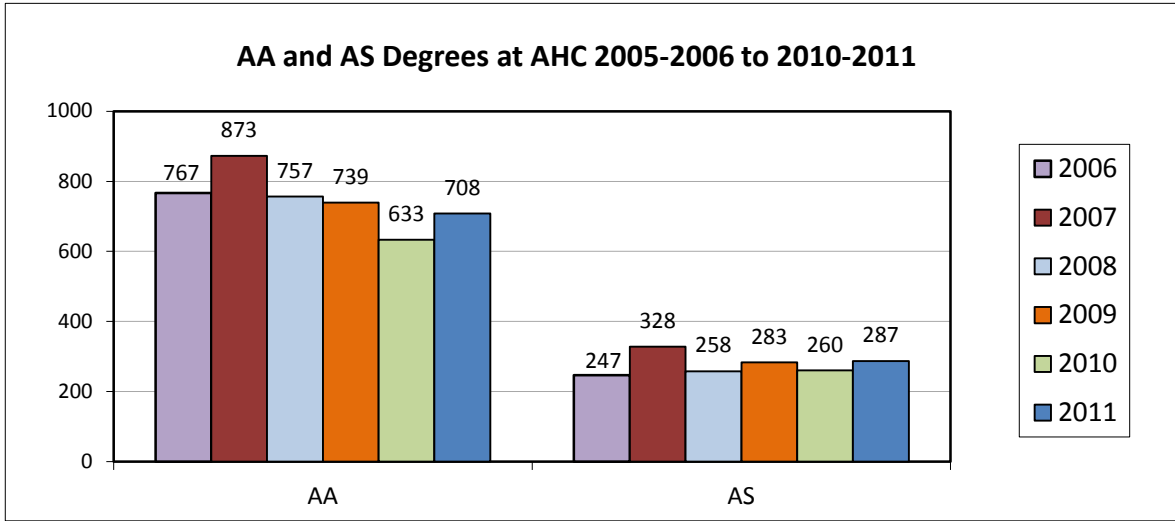
Gender	Credit Students	First-Time Full-Time Students
Female	66.0%	85.6%
Male	58.3%	80.8%
Total	62.2%	83.4%

Students at different stages in their career persist at different rates. First-time full-time students persist at much higher rates than general student body. (Full-time students are those enrolled in 12 units or more in the fall semester.) Also, females historically persist at higher rates than males.

Ethnicity	Credit Students	First-Time Full-Time Students
Afr.-American	56.6%	68.8%
Am. Indian	53.2%	40.0%
Asian	63.2%	84.1%
Hispanic	67.9%	84.6%
Multi-Ethn.	57.8%	81.1%
Pacific Isl.	67.1%	88.9%
Unknown	60.0%	69.2%
White	57.8%	81.1%
Total	62.2%	83.4%

Educational Goal	Credit Students	First-Time Full-Time Students
Transfer	73.9%	88.2%
Degree/Cert	58.1%	80.2%
Career	48.2%	82.2%
Basic Skills	43.7%	61.1%
Other	61.8%	80.7%
Total	62.2%	83.4%

# Degrees and Certificates at AHC





## Degrees and Certificates at AHC

Whereas the number of awarded AA/AS degrees remained relatively stable in the last 6 years (with a peak in 2006-2007 and a low in 2009-2010), the number of awarded Certificates has been increasing. This is due to an increase in CSU Gen Ed/IGETC Gen Ed/Transfer Studies Certificates in the last 3 years.

AA Degrees	2005 - 2006	2006 - 2007	2007 - 2008	2008 - 2009	2009 - 2010	2010 - 2011
Agribusiness	2					2
Art	4	3	3		1	1
Biology	1	3	5	2	6	6
Business Administration	15	15	15	22	23	28
Chemistry	6	8	6	6	5	16
Computer Science	1	2			2	4
Conv Degree/Cert Awarded	1					
Culinology						1
Dance	1	3	1	1		4
Engineering	4	6	8	7	4	15
English	2	2	3	3	5	6
Environmental Studies			1			
International Studies	3		1		1	1
Liberal Arts	436	490	439	452	415	466
Liberal Studies	1				3	1
Mathematics	13	17	7	13	9	27
Music	3	4	2		1	1
Physical Education	3		2	1	4	
Physics	5	8	6	5	5	18
Psychology	21	14	9	20	22	21
Social Science	9	10	7	3	11	14
Spanish	3		3	2	4	1
Speech Communication	5	5	1	1	4	3
Transfer Studies	228	283	238	201	108	72
<b>Total</b>	<b>767</b>	<b>873</b>	<b>757</b>	<b>739</b>	<b>633</b>	<b>708</b>

## Degrees and Certificates at AHC

AS Degrees	2005 - 2006	2006 - 2007	2007 - 2008	2008 - 2009	2009 - 2010	2010 - 2011
Accounting	9	10	8	6	6	12
Administration Of Justice	29	38	27	35	34	31
Agribusiness	6		1	4	2	2
Applied Design Media					1	3
Applied Design/Media	9	18	5	11	10	9
Architectural Drafting	2	3	2	3	4	4
Auto Body Technology				3	2	
Automotive Technology	5	7	4	4	9	8
Business	17	20	20	10	15	13
Comp Bus Info Systms (CBIS)	1	1	2	1		3
Comp Bus Office Tech (CBOT)	7	8	17	14	10	22
Conv Degree/Cert Awarded	12	29	15	11	1	
Cosmetology	1	3	3	2	3	2
Dental Assisting	6	6	6	13	7	9
Early Childhood Studies	27	37	23	31	15	23
Electronics Technology	3	4	3	4	3	2
Emergency Medical Services		3	2	4		4
Engineering Technology	2				1	2
Environmental Technology	1					
Family and Consumer Science	1	2	1	1	3	1
Film and Video Production						3
Fire Technology	39	60	39	42	51	51
Graphic Communication					1	
Human Services	15	14	10	4	11	11
Machine Technology	1	1	1			
Medical Assisting					3	3
Nursing	51	63	69	76	66	63
Pharmacy Technology					1	
Recreation Management						1
Welding Technology	2			3	1	4
Wildland Firefighting	1	1		1		1
<b>Total</b>	<b>247</b>	<b>328</b>	<b>258</b>	<b>283</b>	<b>260</b>	<b>287</b>

Certificates 60+ units	2005 - 2006	2006 - 2007	2007 - 2008	2008 - 2009	2009 - 2010	2010 - 2011
Drama	54	23	4	62	32	30
<b>Total</b>	<b>54</b>	<b>23</b>	<b>4</b>	<b>62</b>	<b>32</b>	<b>30</b>

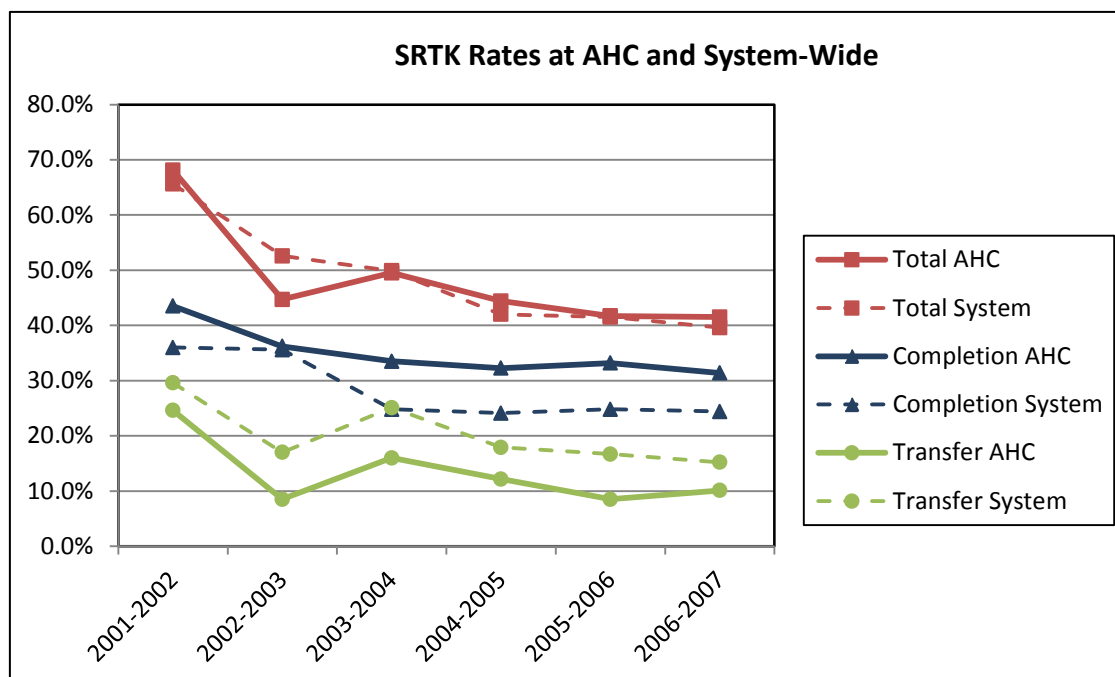
## Degrees and Certificates at AHC

Certificates 30-<60 units	2005 - 2006	2006 - 2007	2007 - 2008	2008 - 2009	2009 - 2010	2010 - 2011
Automotive Technology	1	4				9
Comp Bus Info Systms (CBIS)		1		2		
Conv Degree/Cert Awarded	5	6				
CSU Gen Ed Cert				109	177	
Culinary Arts and Managemen						1
Dance			1	1		
Dental Assisting						29
Early Childhood Studies	8	4	4	5	9	5
Electronics Technology	1		1	1		
Film and Video Production					1	
Fire Technology	56	53	32	57	41	40
Human Services	12	15	12	10	4	18
IGETC Gen Ed Cert				52	77	
Medical Assisting						20
Nursing	50	62	71	76	66	1
Transfer Studies						324
Welding Technology						2
<b>Total</b>	<b>133</b>	<b>145</b>	<b>121</b>	<b>313</b>	<b>375</b>	<b>449</b>
Certificates 18-<30 units	2005 - 2006	2006 - 2007	2007 - 2008	2008 - 2009	2009 - 2010	2010 - 2011
Accounting	4	1	3	1	2	2
Agribusiness	1	1				
Applied Design/Media	1					
Auto Body Technology	1		1	2	2	3
Automotive Technology						4
Business		3	2	1	3	1
Comp Bus Office Tech (CBOT)		2	2	7	6	7
Conv Degree/Cert Awarded	11	22	11	10	1	
Cosmetology	100	94	101	74	139	124
Culinary Arts and Managemen		3		1	3	1
Dental Assisting	21	23	18	21	25	
Early Childhood Studies	15	11	21	7	5	
Electronics Technology					1	1
Environmental Technology			1			
Family and Consumer Science			3		1	1
Human Services	17	15	4	3	5	9
Med Assisting-Administrative					3	
Med Assisting-Clinical					8	4
Medical Assisting						21
Sound Technology	4	3	2	2	1	2
Transfer Studies				3	4	2
Welding Technology	1			1	1	9
<b>Total</b>	<b>176</b>	<b>178</b>	<b>169</b>	<b>133</b>	<b>210</b>	<b>191</b>

## Student Right-to-Know Completion and Transfer Rates

Student Right-to-Know (SRTK) refers to a federally mandated public disclosure of a college's completion and transfer rate.

	Completion		Transfer		Total	
	AHC	System	AHC	System	AHC	System
2001-2002	43.5%	36.0%	24.6%	29.6%	68.1%	65.6%
2002-2003	36.2%	35.6%	8.5%	17.0%	44.7%	52.6%
2003-2004	33.5%	24.8%	16.0%	25.1%	49.5%	49.9%
2004-2005	32.3%	24.1%	12.2%	17.9%	44.4%	42.0%
2005-2006	33.2%	24.8%	8.5%	16.7%	41.7%	41.5%
2006-2007	31.4%	24.4%	10.1%	15.2%	41.5%	39.6%



SRTK is a "cohort" study. The SRTK Cohort is a group of students who are first-time freshmen, enrolled full-time and are degree-seeking. These students are identified in a fall term and their outcomes are measured over a period of time. The SRTK Cohort produces two measures. The first measure is the Completion Rate (the total number of students in the cohort who earn either a degree, a certificate, or who successfully completed a two-year-equivalent transfer-preparatory program). The second measure is the Transfer Rate (the total number of cohort non-completers who were identified as having enrolled in another institution). The tracking period of the cohorts is three (3) years, at which time the SRTK rates are calculated and made public.

SRTK has its merits in that it attempts to provide a standardized measure of college effectiveness nationwide. However, in order to fully understand what SRTK rates mean for a college, one should also know its limitations. First, the cohort group can be quite small compared to the entire Community College population, and is therefore not fully representative of all educational activities at a college. Many Community Colleges do not have the primary mission of producing only transferable students. Additionally, **the Federal methodology lowers the Transfer rate for**

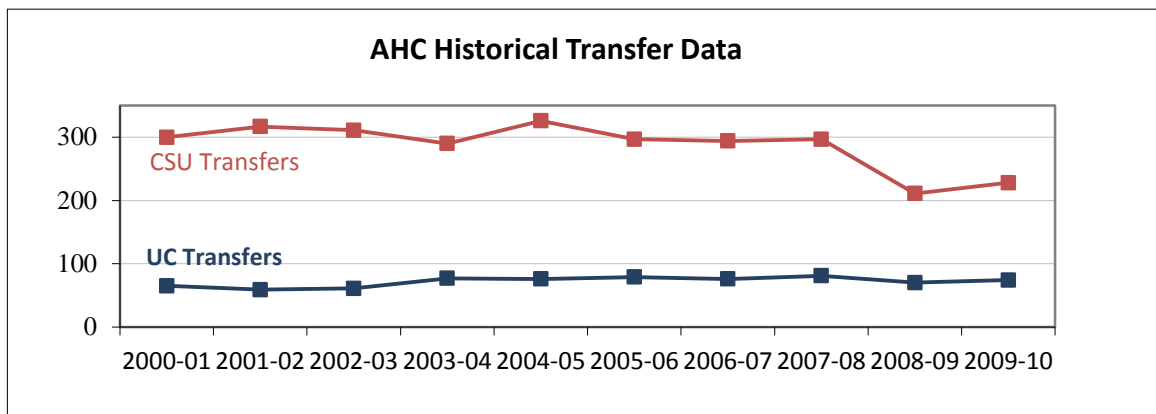
## Transfers to UC and CSU

**Number of Full-Year Transfers to  
the University of California and the California State University  
Allan Hancock College  
Years 2000-01 through 2009-10**

Academic Year	UC		CSU		Total	
	Number	% Change	Number	% Change	Number	% Change
2000-01	65	8%	300	6.4%	365	6.7%
2001-02	59	-9%	317	5.7%	376	3.0%
2002-03	61	3%	311	-1.9%	372	-1.1%
2003-04	77	26%	290	-6.8%	367	-1.3%
2004-05	76	-1%	326	12.4%	402	9.5%
2005-06	79	4%	297	-8.9%	376	-6.5%
2006-07	76	-4%	294	-1.0%	370	-1.6%
2007-08	81	7%	297	1.0%	378	2.2%
2008-09	70	-14%	211	-29.0%	281	-25.7%
2009-10	74	6%	228	8%	302	7%

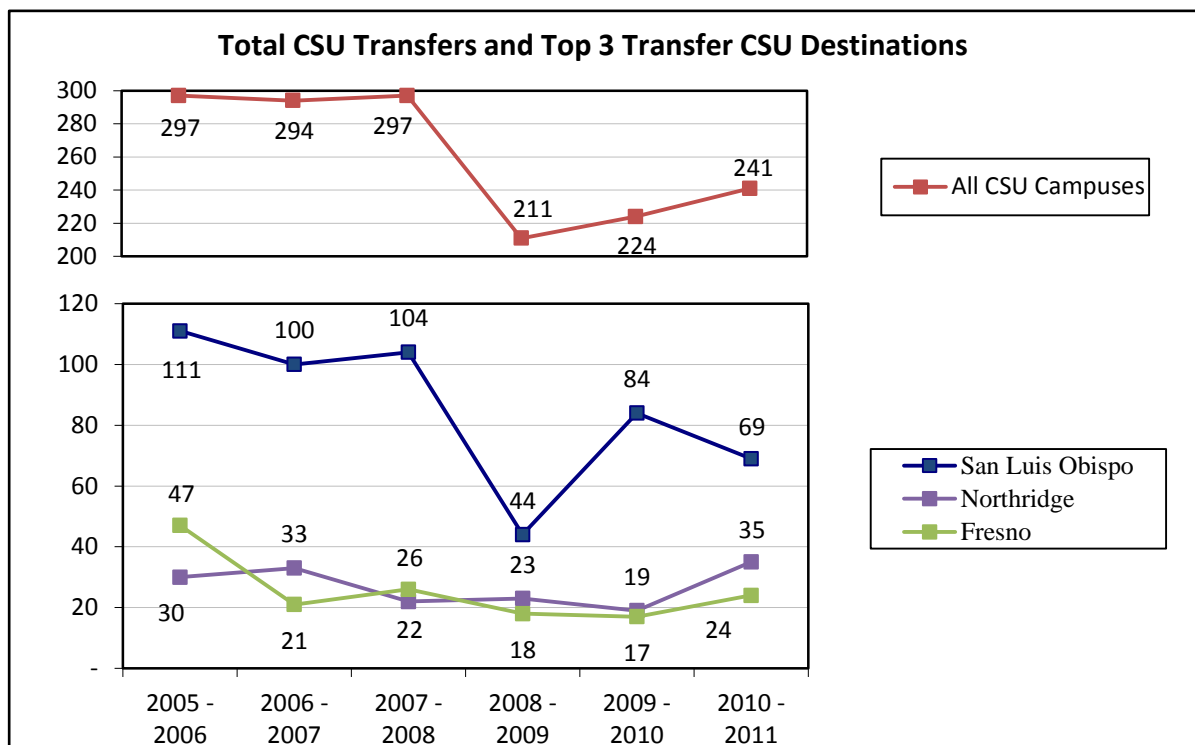
**Number of Full-Year Transfers to  
the University of California and the California State University  
California Community Colleges  
Years 2000-01 through 2009-10**

Academic Year	UC		CSU		TOTAL	
	Number	% Change	Number	% Change	Number	% Change
2000-01	11,215	3.6%	47,858	0.4%	59,073	1.0%
2001-02	12,291	9.6%	50,427	5.4%	62,718	6.2%
2002-03	12,780	4.0%	50,744	0.6%	63,524	1.3%
2003-04	12,580	-1.6%	48,317	-4.8%	60,897	-4.1%
2004-05	13,211	5.0%	53,693	11.1%	66,904	9.9%
2005-06	13,765	4.2%	52,640	-2.0%	66,405	-0.7%
2006-07	13,923	1.1%	54,379	3.3%	68,302	2.9%
2007-08	13,964	0.3%	54,970	1.1%	68,934	0.9%
2008-09	14,112	1.1%	49,768	-9.5%	63,880	-7.3%
2009-10	14,690	4.1%	37,651	-24.3%	52,341	-18.1%



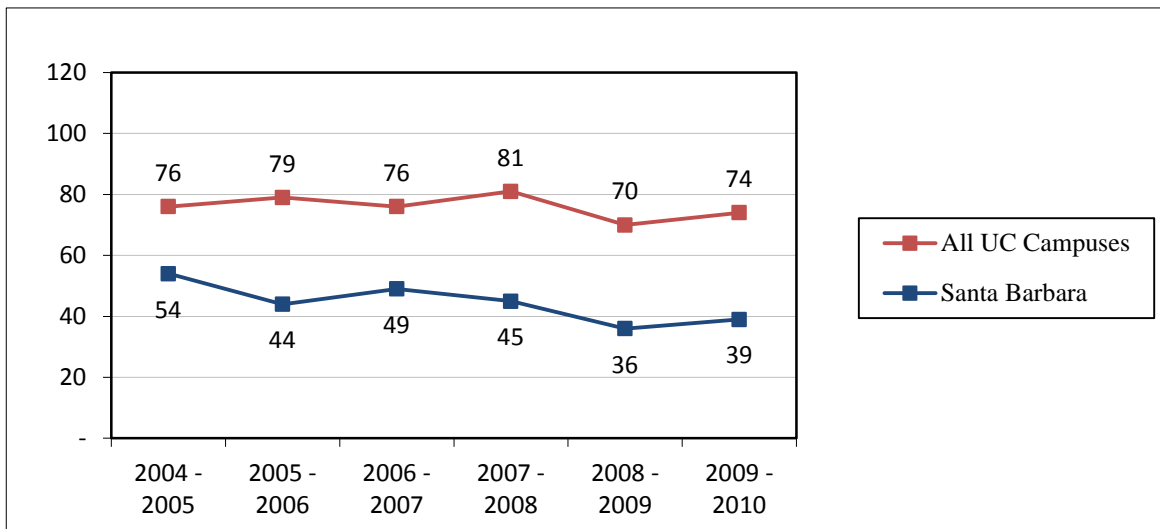
## Transfers to UC and CSU

CSU Campus Destination	2005 - 2006	2006 - 2007	2007 - 2008	2008 - 2009	2009 - 2010	2010 - 2011
Bakersfield	4	3	10	7	7	7
Channel Islands	7	12	8	5	7	11
Chico	10	9	12	13	11	6
Dominguez Hills	1	2	4	6	3	5
East Bay	3	2	1	6	4	7
Fresno	47	21	26	18	17	24
Fullerton	13	11	11	12	7	6
Humboldt	2	7	8	8	1	5
Long Beach	19	20	24	9	8	15
Los Angeles	3	4	5	5	3	8
Maritime Academy	-	-	-	-	-	-
Monterey Bay	5	7	4	4	7	6
Northridge	30	33	22	23	19	35
Pomona	2	6	3	2	1	2
Sacramento	5	6	3	9	11	9
San Bernardino	3	1	5	1	2	-
San Diego	7	23	27	11	2	5
San Francisco	11	11	10	15	11	7
San Jose	8	12	7	12	11	11
San Luis Obispo	111	100	104	44	84	69
San Marcos	2	-	1	-	5	-
Sonoma	4	2	2	-	1	2
Stanislaus	-	2	-	1	2	1
<b>Total</b>	<b>297</b>	<b>294</b>	<b>297</b>	<b>211</b>	<b>224</b>	<b>241</b>



## Transfers to UC and CSU

UC Campus Destination	2004 - 2005	2005 - 2006	2006 - 2007	2007 - 2008	2008 - 2009	2009 - 2010
Berkeley	2	3	2	6	2	5
Davis	4	10	4	9	15	8
Irvine	4	4	5	5	0	5
Los Angeles	7	6	6	6	9	4
Merced		0	0	0	0	2
Riverside	1	0	4	2	3	2
San Diego	2	4	2	2	3	7
Santa Barbara	54	44	49	45	36	39
Santa Cruz	2	8	4	6	2	2
<b>Total</b>	76	79	76	81	70	74



After a drop in 2008-2009, AHC transfers to the UC and CSU systems seem to slowly recover.

Some of the more popular CSU transfer destinations include Cal Poly, Northridge, and Fresno. San Diego State has lost its popularity over the last 3 years.

While the percentages vary from year to year, approximately one-half AHC transfers to

## Performance and Persistence of AHC Transfer Students at AHC

### 2007-08

	Pre-admission GPA
<b>AHC</b>	2.97
<b>Systemwide</b>	2.99

	Enrolled Fall 2007	Continuation Fall 2008		CSU GPA	
		Number	Rate	Number	Average
<b>AHC</b>	202	178	88.1%	172	2.84
Upper Division	188	169	89.9%	163	2.85
Lower Division	14	9	64.3%	9	2.63

<b>Systemwide</b>	36,625	30,921	84.4%	29,362	2.93
Upper Division	33,689	28,659	85.1%	27,265	2.94
Lower Division	2,936	2,262	77.0%	2,097	2.74

### 2008-09

	Pre-admission GPA
<b>AHC</b>	3.03
<b>Systemwide</b>	3.03

	Enrolled Fall 2008	Continuation Fall 2009		CSU GPA	
		Number	Rate	Number	Average
<b>AHC</b>	165	145	87.9%	143	2.92
Upper Division	156	137	87.8%	135	2.93
Lower Division	9	8	88.9%	8	2.59

<b>Systemwide</b>	33,278	28,238	84.9%	27,840	2.98
Upper Division	31,390	26,781	85.3%	26,417	2.99
Lower Division	1,888	1,457	77.2%	1,423	2.78

### 2009-10

	Pre-admission GPA
<b>AHC</b>	3.06
<b>Systemwide</b>	3.00

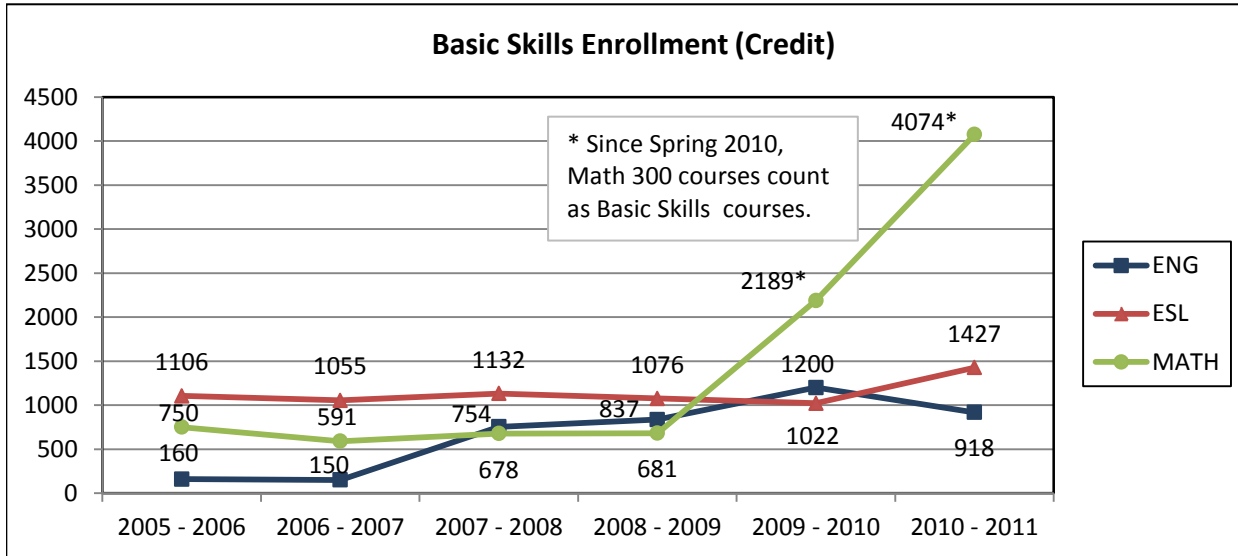
	Enrolled Fall 2009	Continuation Fall 2010		CSU GPA	
		Number	Rate	Number	Average
<b>AHC</b>	219	191	87.2%	191	2.97
Upper Division	216	189	87.5%	189	2.97
Lower Division	3	2	66.7%	2	2.92

<b>Systemwide</b>	35,655	30,481	85.5%	30,171	2.98
Upper Division	34,191	29,348	85.8%	29,065	2.98
Lower Division	1,464	1,133	77.4%	1,106	2.87



## Basic Skills Enrollment and Performance Indicators

The mission of the California Community College system includes pre-collegiate basic skills education. Credit and noncredit courses are offered to facilitate transition towards associate and transfer level courses for students lacking requisite skills. The three primary areas of basic skills instruction include English (reading and writing), ESL (English as a second language), and mathematics.

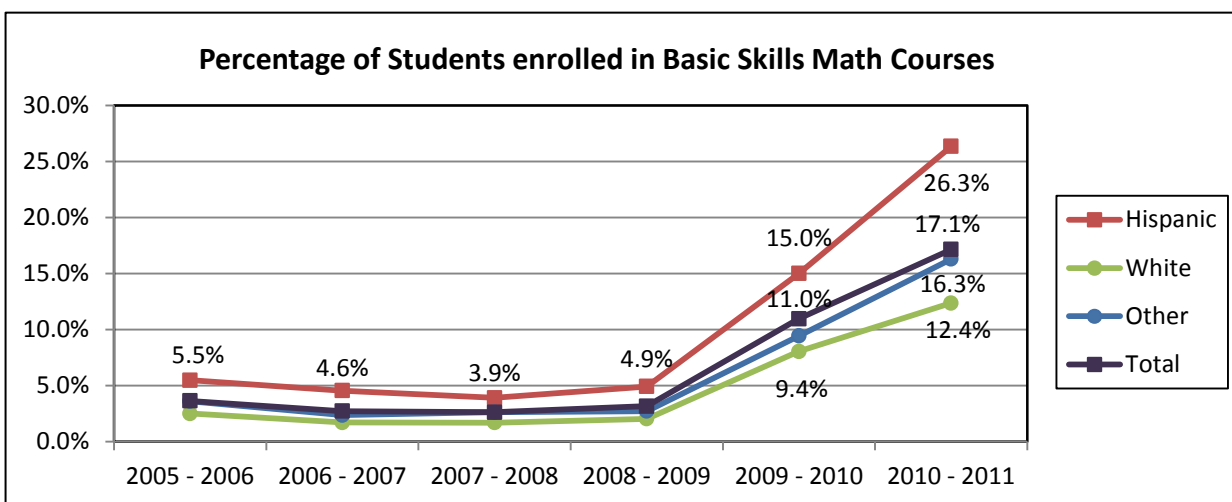
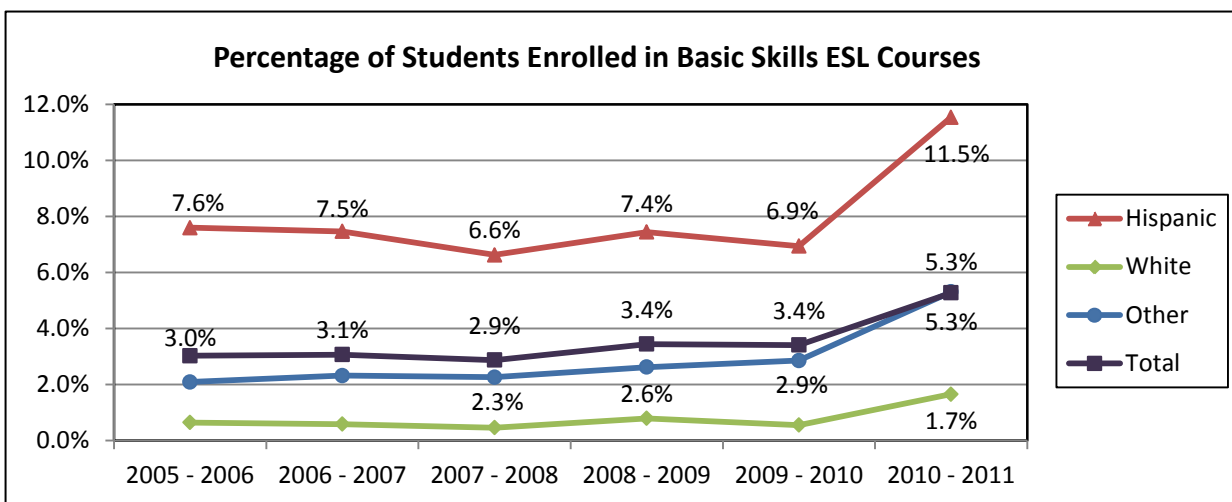
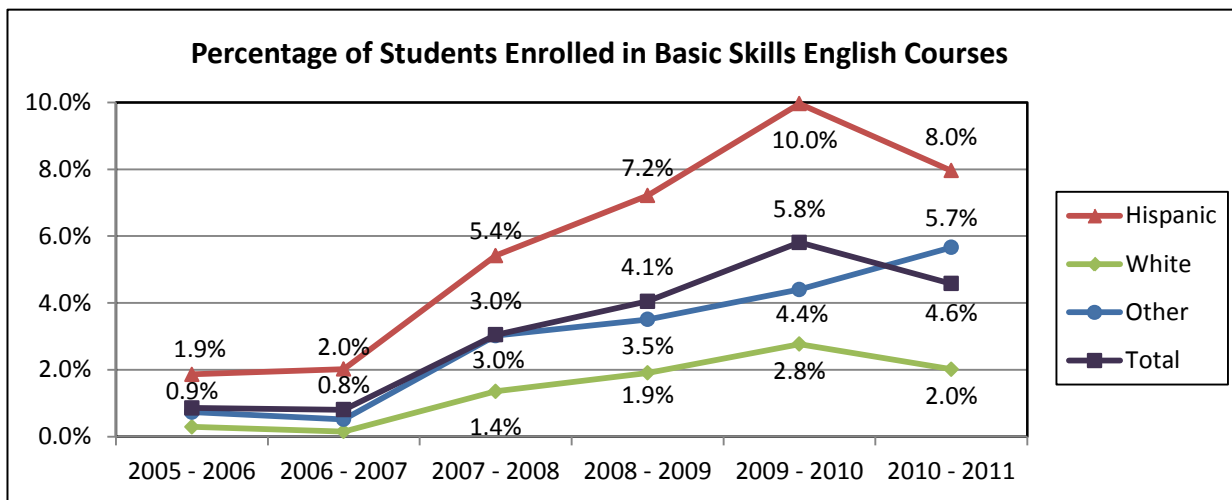


### 2010-2011 Retention and Success for the 3 Primary Basic Skills Categories (English, ESL, and Math)

Gender	English		ESL		Math	
	Retention	Success	Retention	Success	Retention	Success
Female	87.8%	65.7%	85.6%	65.7%	82.4%	59.2%
Male	85.6%	62.4%	84.0%	56.7%	82.3%	56.6%
<b>Total</b>	<b>86.8%</b>	<b>64.3%</b>	<b>85.0%</b>	<b>62.2%</b>	<b>82.4%</b>	<b>58.1%</b>

Ethnicity	English		ESL		Math	
	Retention Rate	Success Rate	Retention Rate	Success Rate	Retention Rate	Success Rate
Afr.-Amer.	91.1%	62.2%	81.8%	52.3%	75.2%	40.9%
Am. Indian	72.7%	63.6%	100.0%	50.0%	78.9%	50.0%
Asian	90.8%	63.1%	87.9%	74.8%	87.8%	72.0%
Hispanic	86.9%	62.9%	84.0%	60.6%	82.6%	54.5%
Multi-Ethn.	94.7%	73.7%	89.5%	63.2%	83.3%	62.1%
Pacific Isl.	100.0%	75.0%	100.0%	50.0%	84.2%	68.4%
Unknown	86.2%	61.6%	88.9%	70.7%	79.1%	58.2%
White	84.4%	69.4%	86.1%	61.3%	83.4%	63.1%
<b>Total</b>	<b>86.8%</b>	<b>64.3%</b>	<b>85.0%</b>	<b>62.2%</b>	<b>82.4%</b>	<b>58.1%</b>

## Basic Skills Enrollment and Performance Indicators



The percentage of students enrolled in Basic Skills English has been steadily increasing over the last years whereas the percentage of students enrolled in ESL and Math has remained stable until 2010-2011. Note that since Spring 2010, Math 300 courses count as Basic Skills which explains the sharp increase in enrolled students.