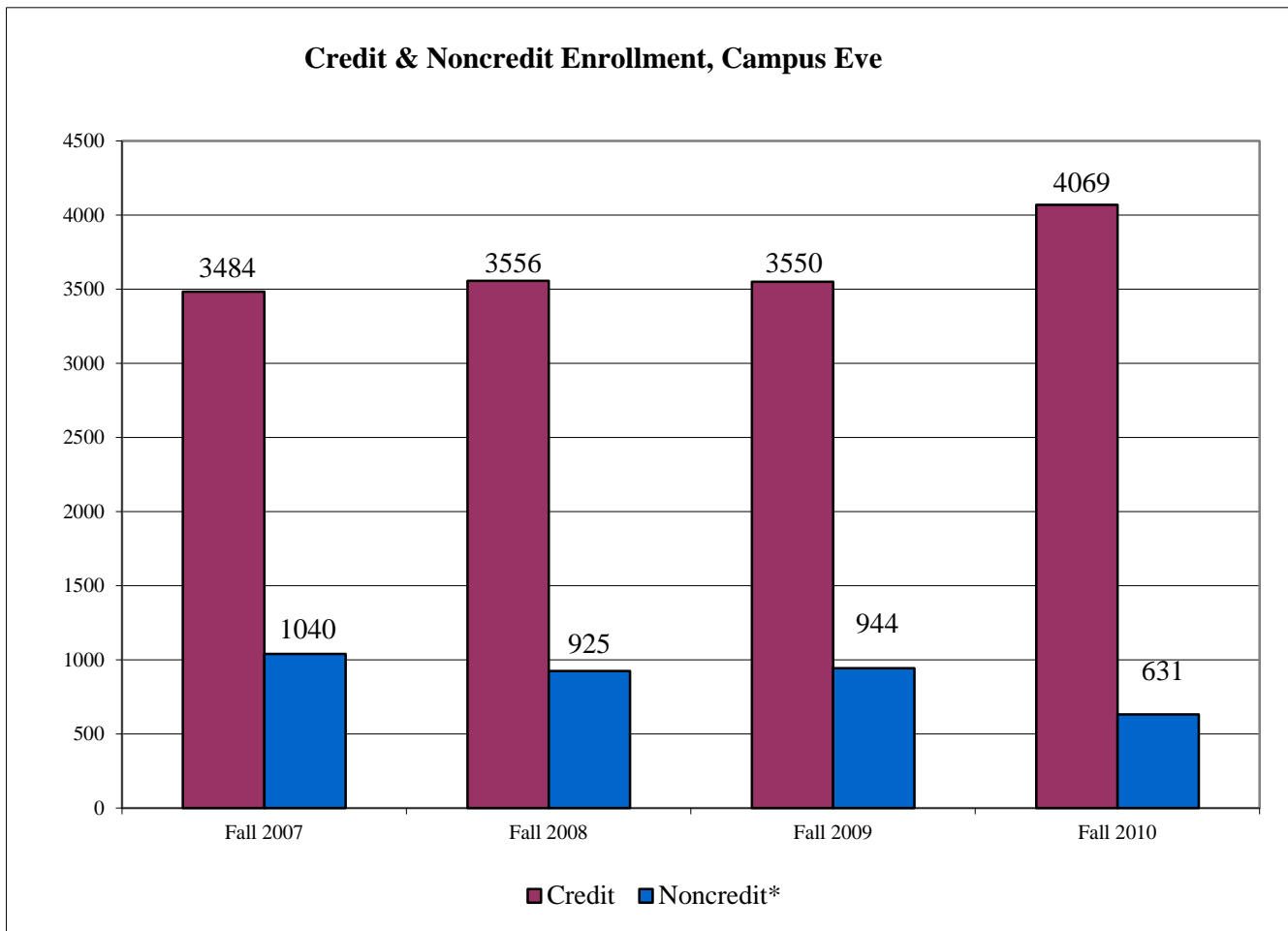


5. *Santa Maria Campus Eve Profile*

<i>Topic</i>	<i>Page</i>
<i>Enrollment at Santa Maria Campus Eve</i>	5-2
<i>Age by Gender by Ethnicity</i>	5-3
<i>Age Categories</i>	5-4
<i>City of Origin</i>	5-5
<i>Educational Goals</i>	5-6
<i>Enrollment Status</i>	5-7
<i>Ethnicity</i>	5-8
<i>Gender</i>	5-9
<i>Unit Load - Earned by Student at any campus</i>	5-10
<i>Unit Load - Earned by Student at Campus Eve only</i>	5-11
<i>Noncredit Age Categories</i>	5-12
<i>Noncredit City of Origin</i>	5-13
<i>Noncredit Educational Goals</i>	5-14
<i>Noncredit Ethnicity</i>	5-15
<i>Noncredit Gender</i>	5-16

Credit and Noncredit* Enrollment -- Campus Eve

Enrollment	Fall 2007		Fall 2008		Fall 2009		Fall 2010	
	Number	Percent Change	Number	Percent Change	Number	Percent Change	Number	Percent Change
Credit	3484	5.96%	3556	2.07%	3550	-0.17%	4069	14.62%
Noncredit*	1040	22.21%	925	-11.06%	944	2.05%	631	-33.16%
Unduplicated Total	4449	8.99%	4410	-0.88%	4465	1.25%	4686	4.95%



*Noncredit enrollment has been restated to include students that may also be enrolled in credit courses. As a result, the sum of credit and noncredit exceeds the unduplicated total.

Credit* FTR Enrollment, Age by Gender by Ethnicity -- Campus Eve
Fall 2010

Age Categories	Asian				Black				Filipino			
	Female		Male		Female		Male		Female		Male	
	#	%	#	%	#	%	#	%	#	%	#	%
Under 20	17	25.0%	22	38.6%	5	15.6%	15	33.3%	22	33.8%	18	42.9%
20 to 24	22	32.4%	24	42.1%	10	31.3%	14	31.1%	21	32.3%	18	42.9%
25 to 34	14	20.6%	6	10.5%	9	28.1%	7	15.6%	14	21.5%	4	9.5%
35 to 54	15	22.1%	4	7.0%	5	15.6%	8	17.8%	7	10.8%	2	4.8%
55 and Over	0	0.0%	1	1.8%	3	9.4%	1	2.2%	1	1.5%	0	0.0%
Unknown	0	0.0%	0	0.0%	0	0.0%	0	0.0%	0	0.0%	0	0.0%
Total	68	100.0%	57	100.0%	32	100.0%	45	100.0%	65	100.0%	42	100.0%

Age Categories	Hispanic				Nat American				Other Non-White			
	Female		Male		Female		Male		Female		Male	
	#	%	#	%	#	%	#	%	#	%	#	%
Under 20	273	25.6%	273	32.1%	4	16.7%	5	17.9%	3	15.8%	1	7.7%
20 to 24	344	32.2%	332	39.1%	8	33.3%	10	35.7%	9	47.4%	7	53.8%
25 to 34	243	22.8%	170	20.0%	7	29.2%	6	21.4%	2	10.5%	4	30.8%
35 to 54	190	17.8%	71	8.4%	5	20.8%	6	21.4%	4	21.1%	1	7.7%
55 and Over	17	1.6%	4	0.5%	0	0.0%	1	3.6%	1	5.3%	0	0.0%
Unknown	0	0.0%	0	0.0%	0	0.0%	0	0.0%	0	0.0%	0	0.0%
Total	1067	100.0%	850	100.0%	24	100.0%	28	100.0%	19	100.0%	13	100.0%

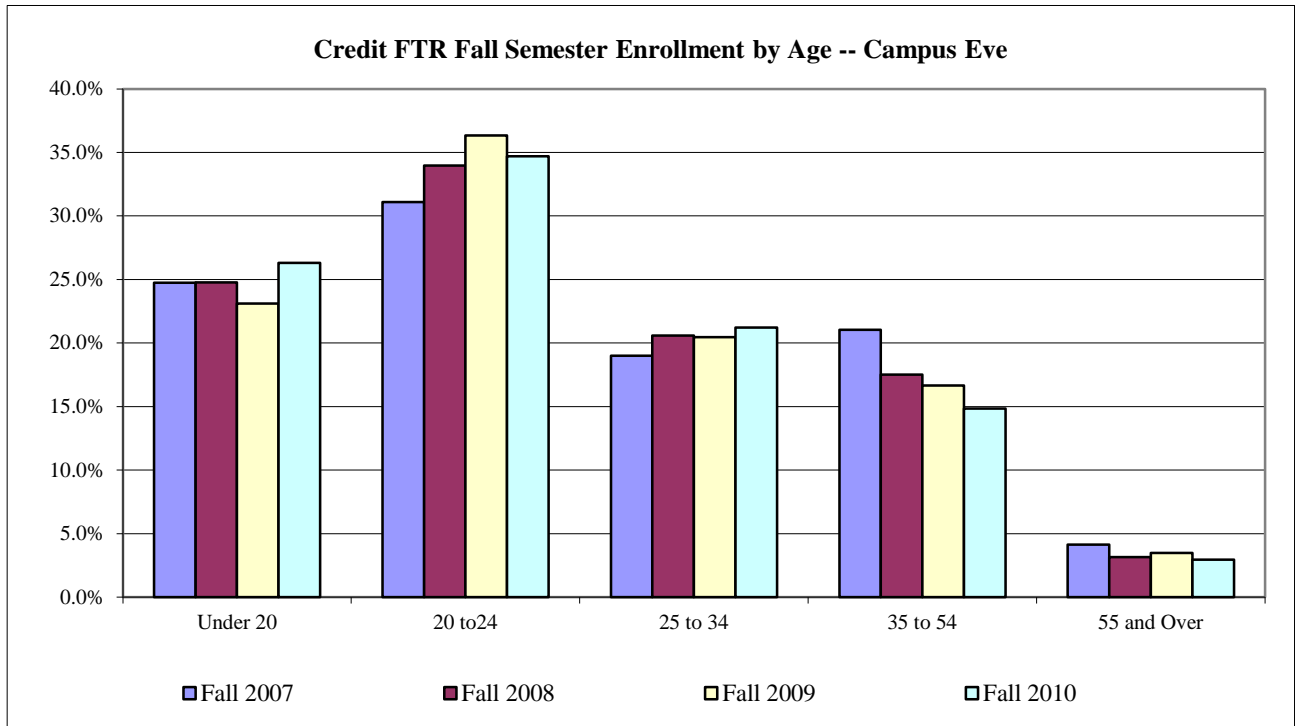
Age Categories	Pacific Islander				White				Unknown			
	Female		Male		Female		Male		Female		Male	
	#	%	#	%	#	%	#	%	#	%	#	%
Under 20	6	42.9%	9	47.4%	189	23.1%	193	26.0%	3	4.7%	5	7.0%
20 to 24	2	14.3%	2	10.5%	263	32.2%	263	35.4%	23	35.9%	32	45.1%
25 to 34	4	28.6%	6	31.6%	177	21.6%	151	20.4%	16	25.0%	18	25.4%
35 to 54	2	14.3%	2	10.5%	151	18.5%	91	12.3%	17	26.6%	13	18.3%
55 and Over	0	0.0%	0	0.0%	38	4.6%	44	5.9%	5	7.8%	3	4.2%
Unknown	0	0.0%	0	0.0%	0	0.0%	0	0.0%	0	0.0%	0	0.0%
Total	14	100.0%	19	100.0%	818	100.0%	742	100.0%	64	100.0%	71	100.0%

Age Categories	Decline to State				Total			
	Female		Male		Female		Male	
	#	%	#	%	#	%	#	%
Under 20	0	#DIV/0!	2	40.0%	522	24.0%	543	29.0%
20 to 24	0	#DIV/0!	2	40.0%	702	32.3%	704	37.6%
25 to 34	0	#DIV/0!	1	20.0%	486	22.4%	373	19.9%
35 to 54	0	#DIV/0!	0	0.0%	396	18.2%	198	10.6%
55 and Over	0	#DIV/0!	0	0.0%	65	3.0%	54	2.9%
Unknown	0	#DIV/0!	0	0.0%	0	0.0%	0	0.0%
Total	0	#DIV/0!	5	100.0%	2171	100.0%	1872	100.0%

*Based on Full-Term Reporting

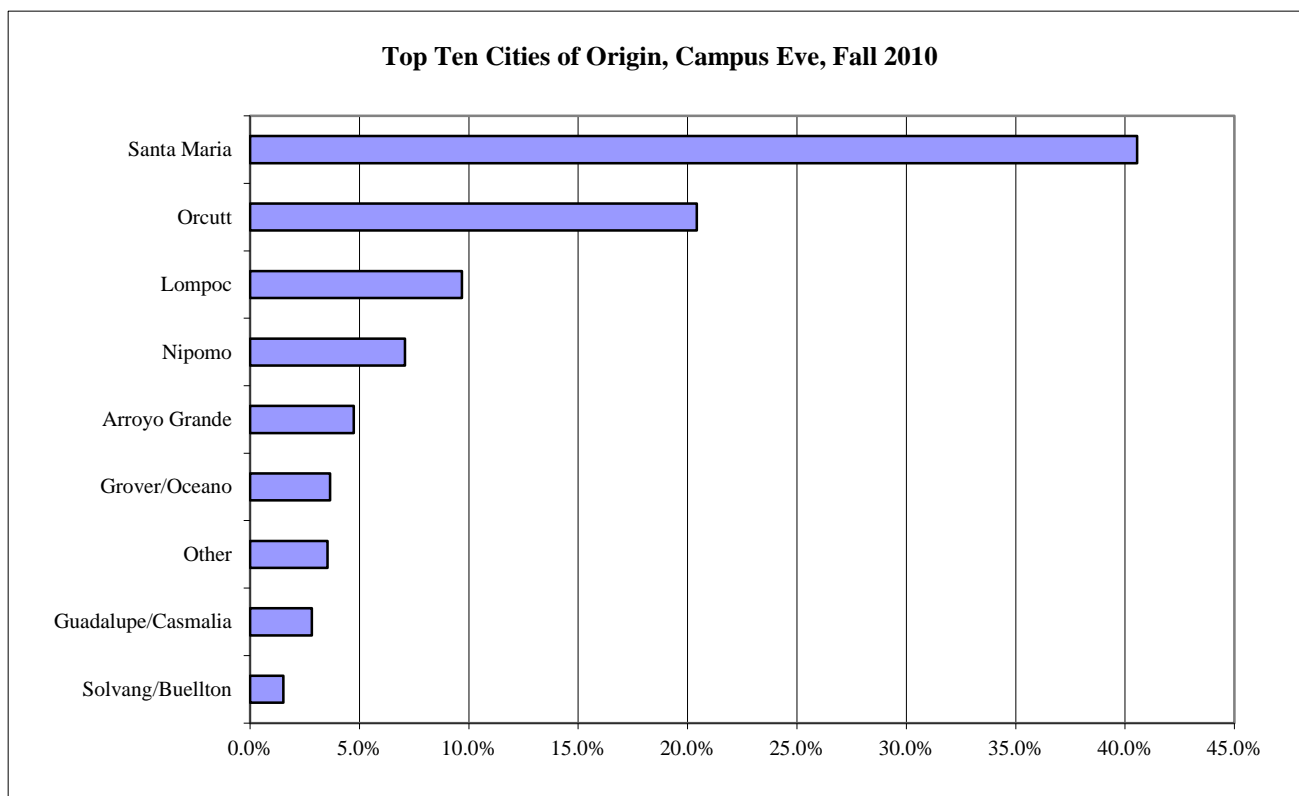
Credit* FTR Enrollment by Age -- Campus Eve

Campus Eve								
Age	Fall 2007		Fall 2008		Fall 2009		Fall 2010	
	#	% of total	#	% of total	#	% of total	#	% of total
Under 20	862	24.7%	881	24.8%	820	23.1%	1070	26.3%
20 to24	1083	31.1%	1208	34.0%	1290	36.3%	1412	34.7%
25 to 34	662	19.0%	732	20.6%	726	20.5%	863	21.2%
35 to 54	733	21.0%	623	17.5%	591	16.6%	604	14.8%
55 and Over	144	4.1%	112	3.1%	123	3.5%	120	2.9%
Missing birthdate	0	0.0%	0	0.0%	0	0.0%	0	0.0%
Total	3484	100.0%	3556	100.0%	3550	100.0%	4069	100.0%
Average Age	28.3		27.3		27.2		26.5	



Credit* FTR Fall Semester Enrollment by City of Origin -- Campus Eve

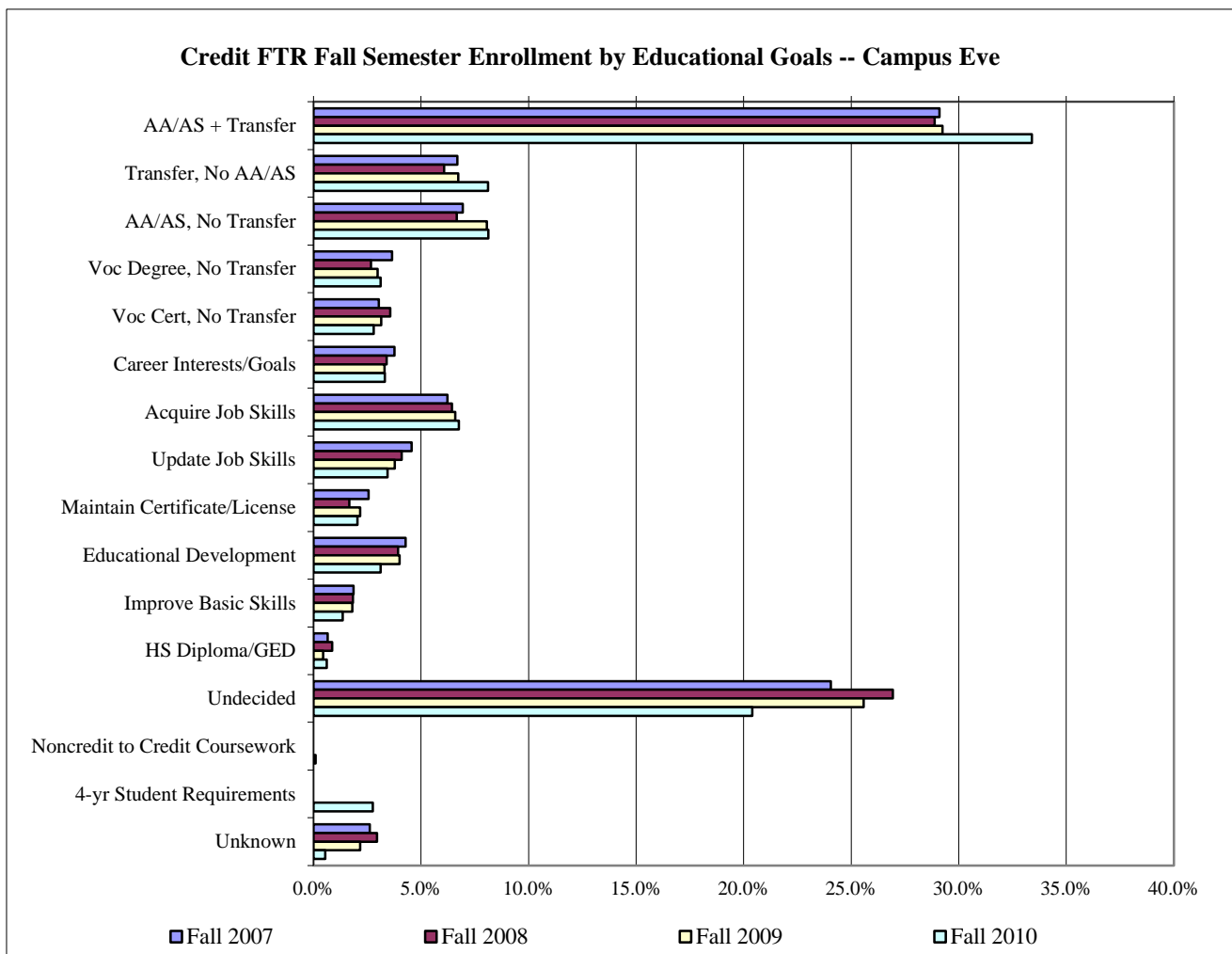
Campus Eve								
City of Origin	Fall 2007		Fall 2008		Fall 2009		Fall 2010	
	#	% of total	#	% of total	#	% of total	#	% of total
Arroyo Grande	192	5.5%	177	5.0%	167	4.7%	193	4.7%
Avila	2	0.1%	1	0.0%	4	0.1%	1	0.0%
Cuyama	8	0.2%	1	0.0%	0	0.0%	0	0.0%
Goleta	1	0.0%	7	0.2%	4	0.1%	5	0.1%
Grover/Oceano	125	3.6%	106	3.0%	123	3.5%	149	3.7%
Guadalupe/Casmalia	113	3.2%	120	3.4%	112	3.2%	115	2.8%
Lompoc	361	10.4%	338	9.5%	353	9.9%	394	9.7%
Los Alamos	16	0.5%	18	0.5%	17	0.5%	20	0.5%
Los Osos	3	0.1%	0	0.0%	0	0.0%	1	0.0%
Morro Bay/Cambria	3	0.1%	1	0.0%	6	0.2%	7	0.2%
Nipomo	261	7.5%	244	6.9%	252	7.1%	288	7.1%
Northern SLO	15	0.4%	17	0.5%	25	0.7%	44	1.1%
Orcutt	789	22.6%	855	24.0%	789	22.2%	831	20.4%
Other	49	1.4%	32	0.9%	45	1.3%	144	3.5%
Pismo/Shell	32	0.9%	35	1.0%	40	1.1%	33	0.8%
San Luis Obispo	41	1.2%	26	0.7%	35	1.0%	60	1.5%
Santa Barbara	3	0.1%	2	0.1%	5	0.1%	2	0.0%
Santa Maria	1358	39.0%	1474	41.5%	1473	41.5%	1650	40.6%
Santa Ynez/Los Olivos	18	0.5%	20	0.6%	24	0.7%	35	0.9%
Solvang/Buellton	59	1.7%	51	1.4%	57	1.6%	62	1.5%
Vandenberg	35	1.0%	31	0.9%	19	0.5%	27	0.7%
Unknown	0	0.0%	0	0.0%	0	0.0%	8	0.2%
Total	3484	100.0%	3556	100.0%	3550	100.0%	4069	100.0%



*Based on Full-Term Reporting

Credit* FTR Fall Semester Enrollment by Educational Goal -- Campus Eve

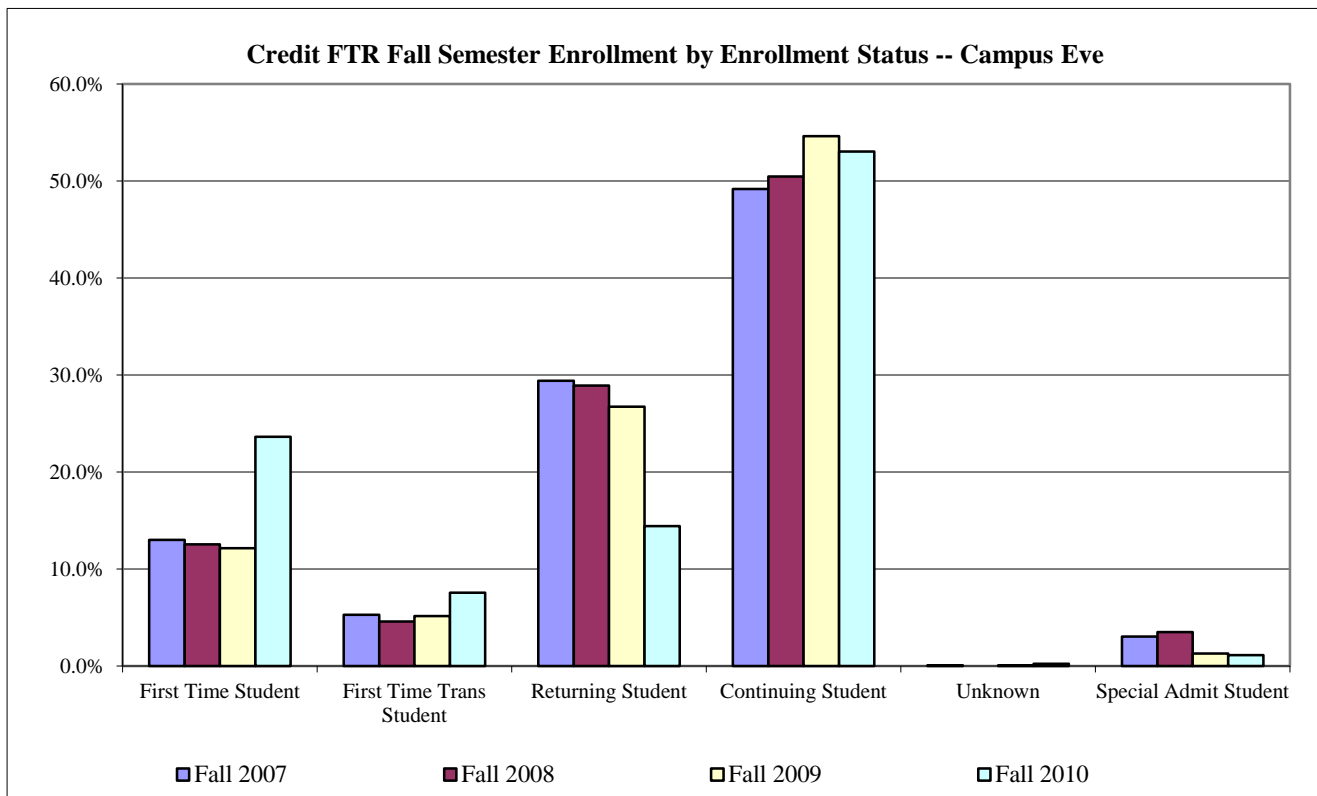
Campus Eve								
Educational Goals	Fall 2007		Fall 2008		Fall 2009		Fall 2010	
	#	% of total	#	% of total	#	% of total	#	% of total
AA/AS + Transfer	1014	29.1%	1027	28.9%	1038	29.2%	1359	33.4%
Transfer, No AA/AS	233	6.7%	216	6.1%	239	6.7%	330	8.1%
AA/AS, No Transfer	242	6.9%	237	6.7%	286	8.1%	331	8.1%
Voc Degree, No Transfer	127	3.6%	95	2.7%	106	3.0%	127	3.1%
Voc Cert, No Transfer	106	3.0%	127	3.6%	112	3.2%	114	2.8%
Career Interests/Goals	131	3.8%	121	3.4%	117	3.3%	135	3.3%
Acquire Job Skills	217	6.2%	229	6.4%	234	6.6%	275	6.8%
Update Job Skills	159	4.6%	146	4.1%	134	3.8%	140	3.4%
Maintain Certificate/License	89	2.6%	59	1.7%	77	2.2%	83	2.0%
Educational Development	149	4.3%	140	3.9%	142	4.0%	127	3.1%
Improve Basic Skills	65	1.9%	65	1.8%	64	1.8%	55	1.4%
HS Diploma/GED	23	0.7%	31	0.9%	16	0.5%	25	0.6%
Undecided	838	24.1%	958	26.9%	908	25.6%	830	20.4%
Noncredit to Credit Coursework	N/A		N/A		N/A		4	0.1%
4-yr Student Requirements	N/A		N/A		N/A		112	2.8%
Unknown	91	2.6%	105	3.0%	77	2.2%	22	0.5%
Total	3484	100.0%	3556	100.0%	3550	100.0%	4069	100.0%



*Based on Full-Term Reporting

Credit* FTR Fall Semester Enrollment by Enrollment Status -- Campus Eve

Campus Eve								
Enrollment Status	Fall 2007		Fall 2008		Fall 2009		Fall 2010	
	#	% of total	#	% of total	#	% of total	#	% of total
First Time Student	453	13.0%	446	12.5%	431	12.1%	962	23.6%
First Time Trans Student	184	5.3%	163	4.6%	183	5.2%	307	7.5%
Returning Student	1025	29.4%	1028	28.9%	949	26.7%	587	14.4%
Continuing Student	1714	49.2%	1795	50.5%	1939	54.6%	2158	53.0%
Unknown	2	0.1%	0	0.0%	2	0.1%	10	0.2%
Special Admit Student	106	3.0%	124	3.5%	46	1.3%	45	1.1%
Total	3484	100.0%	3556	100.0%	3550	100.0%	4069	100.0%

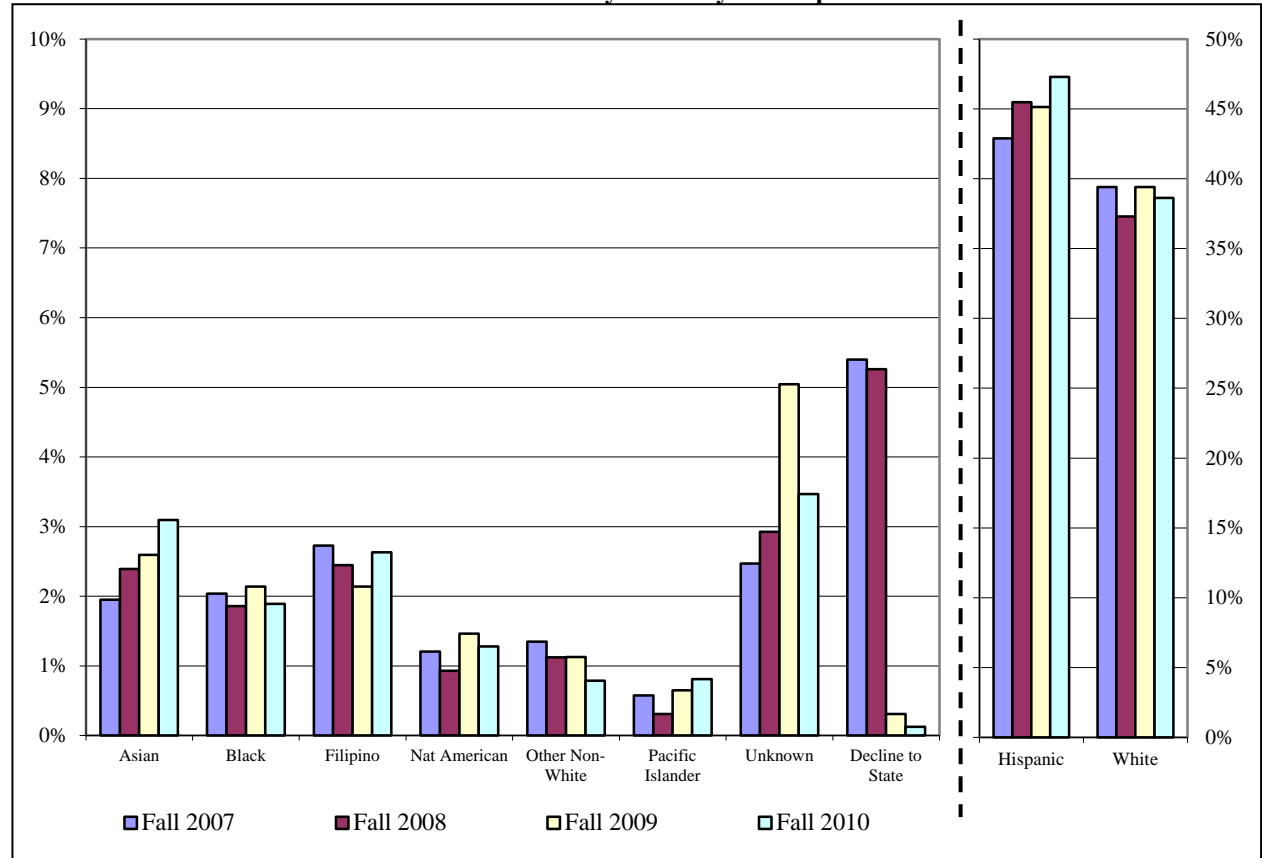


*Based on Full-Term Reporting

Credit* FTR Fall Semester Enrollment by Ethnicity -- Campus Eve

Campus Eve								
Ethnicity	Fall 2007		Fall 2008		Fall 2009		Fall 2010	
	#	% of total	#	% of total	#	% of total	#	% of total
Asian	68	2.0%	85	2.4%	92	2.6%	126	3.1%
Black	71	2.0%	66	1.9%	76	2.1%	77	1.9%
Filipino	95	2.7%	87	2.4%	76	2.1%	107	2.6%
Nat American	42	1.2%	33	0.9%	52	1.5%	52	1.3%
Other Non-White	47	1.3%	40	1.1%	40	1.1%	32	0.8%
Pacific Islander	20	0.6%	11	0.3%	23	0.6%	33	0.8%
Unknown	86	2.5%	104	2.9%	179	5.0%	141	3.5%
Decline to State	188	5.4%	187	5.3%	11	0.3%	5	0.1%
Hispanic	1494	42.9%	1617	45.5%	1602	45.1%	1924	47.3%
White	1373	39.4%	1326	37.3%	1399	39.4%	1572	38.6%
Total	3484	100.0%	3556	100.0%	3550	100.0%	4069	100.0%

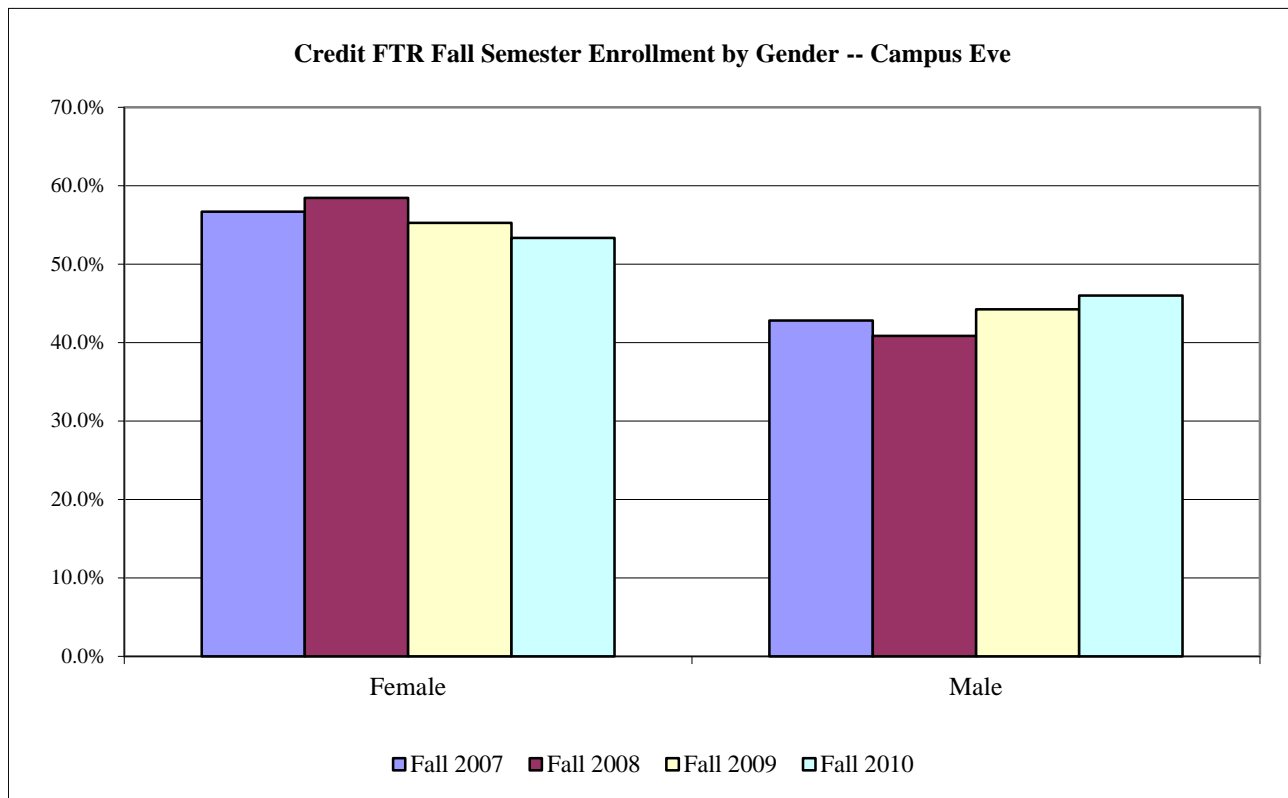
Credit FTR Fall Semester Enrollment by Ethnicity -- Campus Eve



*Based on Full-Term Reporting

Credit* FTR Fall Semester Enrollment by Gender -- Campus Eve

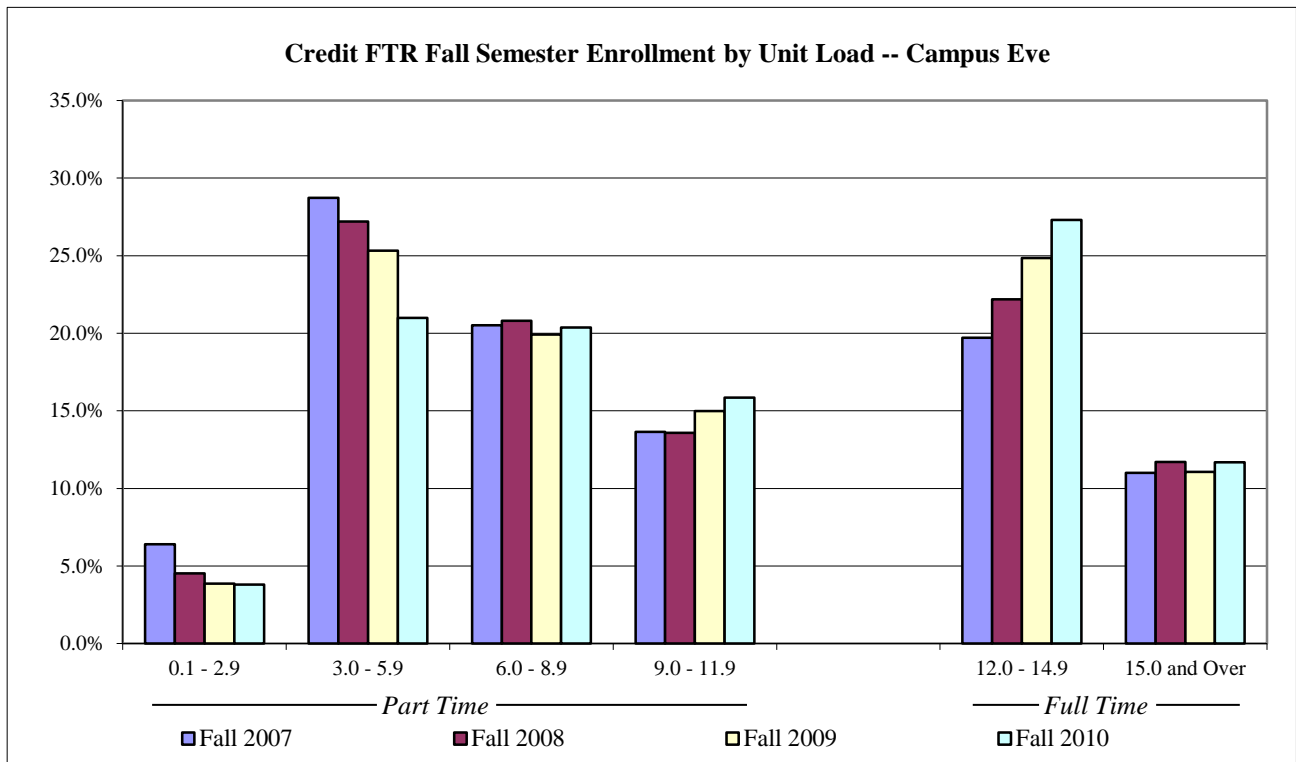
Campus Eve								
Gender	Fall 2007		Fall 2008		Fall 2009		Fall 2010	
	#	% of total	#	% of total	#	% of total	#	% of total
Female	1975	56.7%	2078	58.4%	1962	55.3%	2171	53.4%
Male	1491	42.8%	1452	40.8%	1570	44.2%	1872	46.0%
X	18	0.5%	26	0.7%	18	0.5%	26	0.6%
Total	3484	100.0%	3556	100.0%	3550	100.0%	4069	100.0%



*Based on Full-Term Reporting

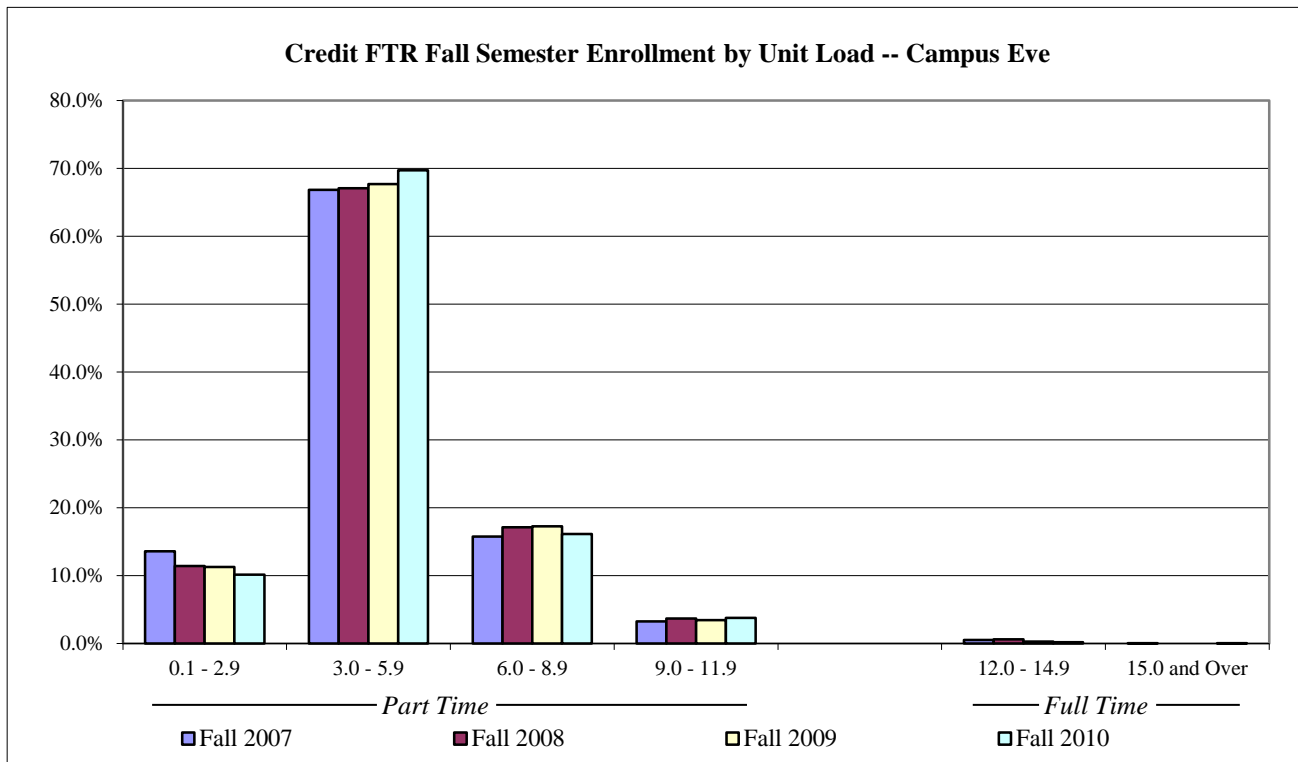
Credit* FTR Fall Semester Enrollment by Unit Load -- Campus Eve
Units Earned by Students Enrolled at Campus Eve

Campus Eve								
Unit Load	Fall 2007		Fall 2008		Fall 2009		Fall 2010	
	#	% of total	#	% of total	#	% of total	#	% of total
0.1 - 2.9	223	6.4%	161	4.5%	137	3.9%	155	3.8%
3.0 - 5.9	1001	28.7%	967	27.2%	899	25.3%	854	21.0%
6.0 - 8.9	715	20.5%	740	20.8%	707	19.9%	829	20.4%
9.0 - 11.9	475	13.6%	483	13.6%	532	15.0%	645	15.9%
12.0 - 14.9	687	19.7%	789	22.2%	882	24.8%	1111	27.3%
15.0 and Over	383	11.0%	416	11.7%	393	11.1%	475	11.7%
Total	3484	100.0%	3556	100.0%	3550	100.0%	4069	100.0%
Average # Units Taken	8.3		8.7		8.8		9.2	



Credit* FTR Fall Semester Enrollment by Unit Load -- Campus Eve
Units Earned at Campus Eve Only

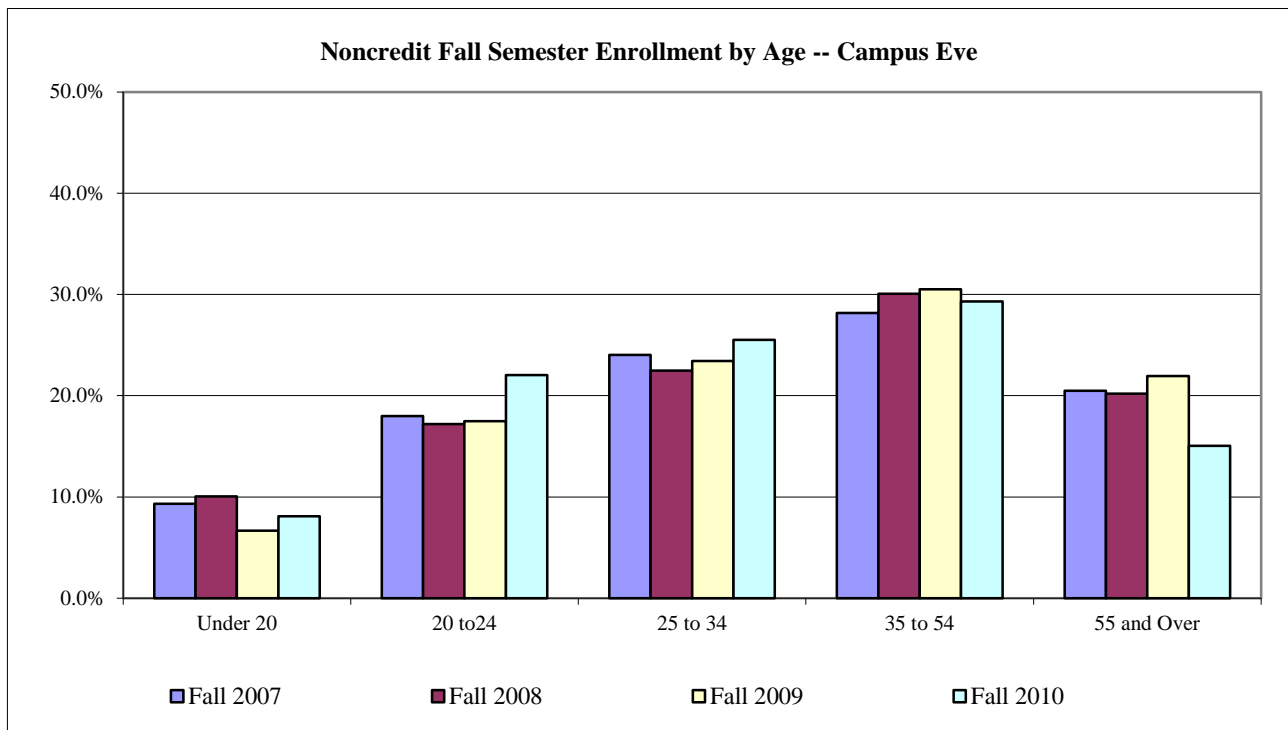
Campus Eve								
Unit Load	Fall 2007		Fall 2008		Fall 2009		Fall 2010	
	#	% of total	#	% of total	#	% of total	#	% of total
0.1 - 2.9	473	13.6%	407	11.4%	401	11.3%	413	10.1%
3.0 - 5.9	2328	66.8%	2385	67.1%	2402	67.7%	2836	69.7%
6.0 - 8.9	550	15.8%	609	17.1%	614	17.3%	657	16.1%
9.0 - 11.9	114	3.3%	132	3.7%	123	3.5%	154	3.8%
12.0 - 14.9	18	0.5%	23	0.6%	10	0.3%	8	0.2%
15.0 and Over	1	0.0%	0	0.0%	0	0.0%	1	0.0%
Total	3484	100.0%	3556	100.0%	3550	100.0%	4069	100.0%
Average # Units Taken	4.0		4.1		4.0		3.9	



*Based on Full-Term Reporting

Noncredit* Fall Semester Enrollment by Age -- Campus Eve

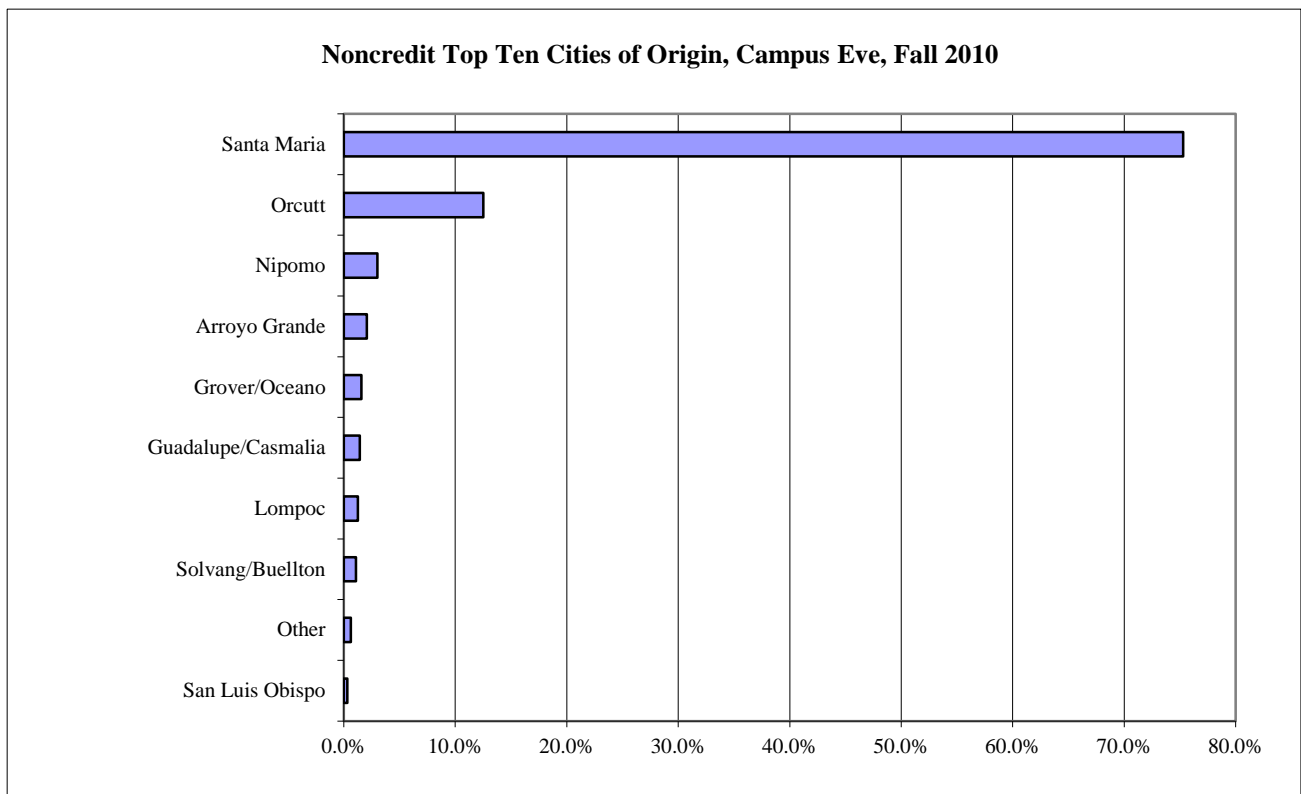
Campus Eve								
Age	Fall 2007		Fall 2008		Fall 2009		Fall 2010	
	#	% of total	#	% of total	#	% of total	#	% of total
Under 20	97	9.3%	93	10.1%	63	6.7%	51	8.1%
20 to24	187	18.0%	159	17.2%	165	17.5%	139	22.0%
25 to 34	250	24.0%	208	22.5%	221	23.4%	161	25.5%
35 to 54	293	28.2%	278	30.1%	288	30.5%	185	29.3%
55 and Over	213	20.5%	187	20.2%	207	21.9%	95	15.1%
Missing Birthdate	0	0.0%	0	0.0%	0	0.0%	0	0.0%
Total	1040	100.0%	925	100.0%	944	100.0%	631	100.0%
Average Age	38.4		38.3		39.5		36.0	



**Please note that noncredit enrollment has been restated to include students that may also be enrolled in credit courses. This criterion was changed in the 2002 Fact Book.*

Noncredit* Fall Semester Enrollment by City of Origin -- Campus Eve

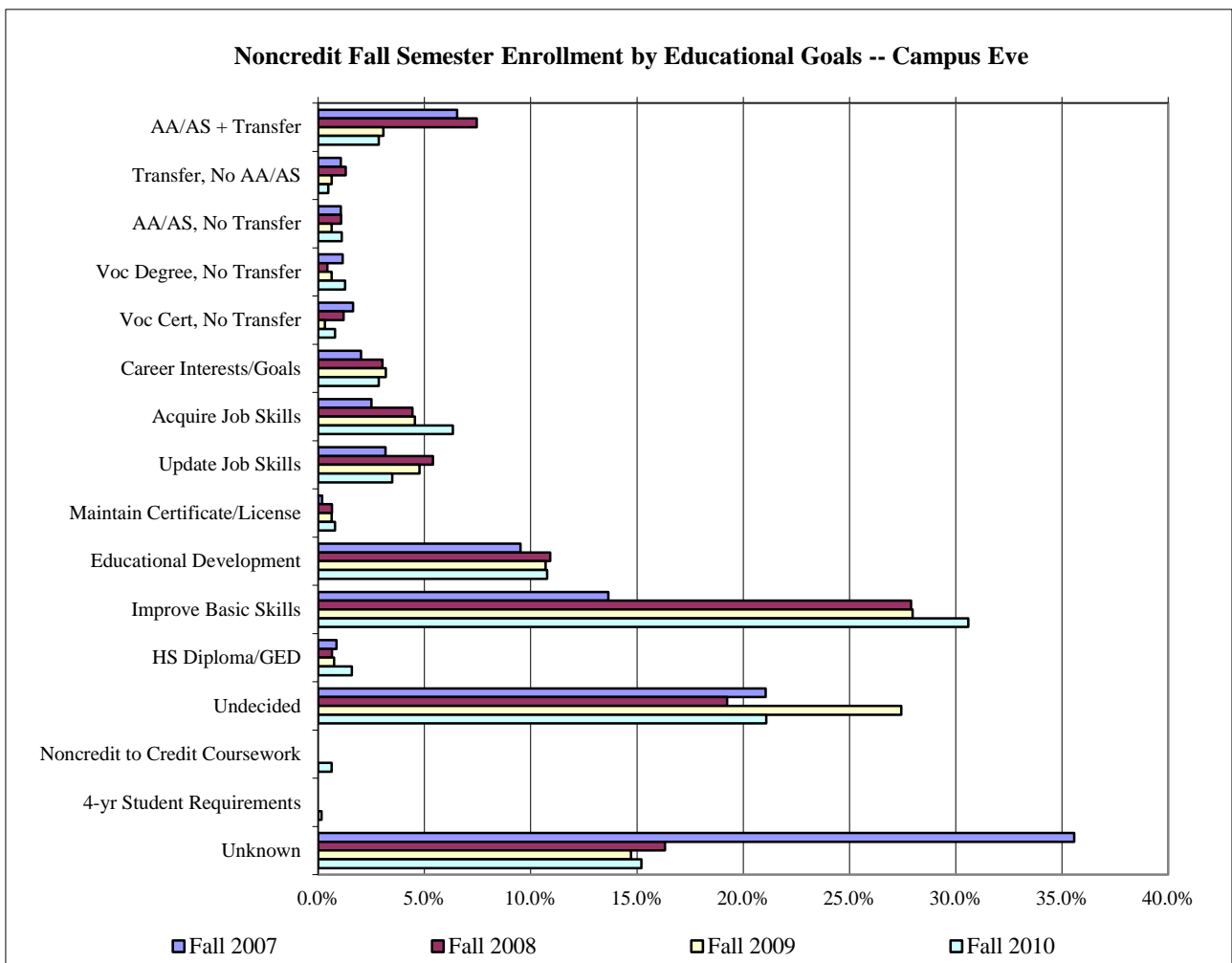
Campus Eve								
City of Origin	Fall 2007		Fall 2008		Fall 2009		Fall 2010	
	#	% of total	#	% of total	#	% of total	#	% of total
Arroyo Grande	15	1.4%	13	1.4%	20	2.1%	13	2.1%
Avila	0	0.0%	1	0.1%	0	0.0%	0	0.0%
Cuyama	0	0.0%	0	0.0%	0	0.0%	0	0.0%
Goleta	0	0.0%	1	0.1%	0	0.0%	0	0.0%
Grover/Oceano	15	1.4%	19	2.1%	11	1.2%	10	1.6%
Guadalupe/Casmalia	19	1.8%	24	2.6%	23	2.4%	9	1.4%
Lompoc	26	2.5%	27	2.9%	7	0.7%	8	1.3%
Los Alamos	5	0.5%	4	0.4%	6	0.6%	2	0.3%
Morro Bay/ Cambria	0	0.0%	0	0.0%	0	0.0%	0	0.0%
Nipomo	52	5.0%	54	5.8%	49	5.2%	19	3.0%
Northern SLO	4	0.4%	3	0.3%	6	0.6%	0	0.0%
Orcutt	174	16.7%	167	18.1%	157	16.6%	79	12.5%
Other	3	0.3%	1	0.1%	2	0.2%	4	0.6%
Paso Robles/Creston	0	0.0%	0	0.0%	0	0.0%	0	0.0%
Pismo/Shell	6	0.6%	5	0.5%	3	0.3%	1	0.2%
San Luis Obispo	1	0.1%	3	0.3%	2	0.2%	2	0.3%
Santa Barbara	0	0.0%	0	0.0%	0	0.0%	0	0.0%
Santa Maria	697	67.0%	587	63.5%	648	68.6%	475	75.3%
Santa Ynez/Los Olivos	6	0.6%	9	1.0%	4	0.4%	1	0.2%
Solvang/Buellton	15	1.4%	4	0.4%	3	0.3%	7	1.1%
Vandenberg	2	0.2%	3	0.3%	3	0.3%	1	0.2%
Unknown	0	0.0%	0	0.0%	0	0.0%	0	0.0%
Total	1040	100.0%	925	100.0%	944	100.0%	631	100.0%



**Please note that noncredit enrollment has been restated to include students that may also be enrolled in credit courses. This criterion was changed in the 2002 Fact Book.*

Noncredit* Fall Semester Enrollment by Educational Goal -- Campus Eve

Campus Eve								
Educational Goals	Fall 2007		Fall 2008		Fall 2009		Fall 2010	
	#	% of total	#	% of total	#	% of total	#	% of total
AA/AS + Transfer	68	6.5%	69	7.5%	29	3.1%	18	2.9%
Transfer, No AA/AS	11	1.1%	12	1.3%	6	0.6%	3	0.5%
AA/AS, No Transfer	11	1.1%	10	1.1%	6	0.6%	7	1.1%
Voc Degree, No Transfer	12	1.2%	4	0.4%	6	0.6%	8	1.3%
Voc Cert, No Transfer	17	1.6%	11	1.2%	3	0.3%	5	0.8%
Career Interests/Goals	21	2.0%	28	3.0%	30	3.2%	18	2.9%
Acquire Job Skills	26	2.5%	41	4.4%	43	4.6%	40	6.3%
Update Job Skills	33	3.2%	50	5.4%	45	4.8%	22	3.5%
Maintain Certificate/License	2	0.2%	6	0.6%	6	0.6%	5	0.8%
Educational Development	99	9.5%	101	10.9%	101	10.7%	68	10.8%
Improve Basic Skills	142	13.7%	258	27.9%	264	28.0%	193	30.6%
HS Diploma/GED	9	0.9%	6	0.6%	7	0.7%	10	1.6%
Undecided	219	21.1%	178	19.2%	259	27.4%	133	21.1%
Noncredit to Credit Coursework	N/A		N/A		N/A		4	0.6%
4-yr Student Requirements	N/A		N/A		N/A		1	0.2%
Unknown	370	35.6%	151	16.3%	139	14.7%	96	15.2%
Total	1040	100.0%	925	100.0%	944	100.0%	631	100.0%

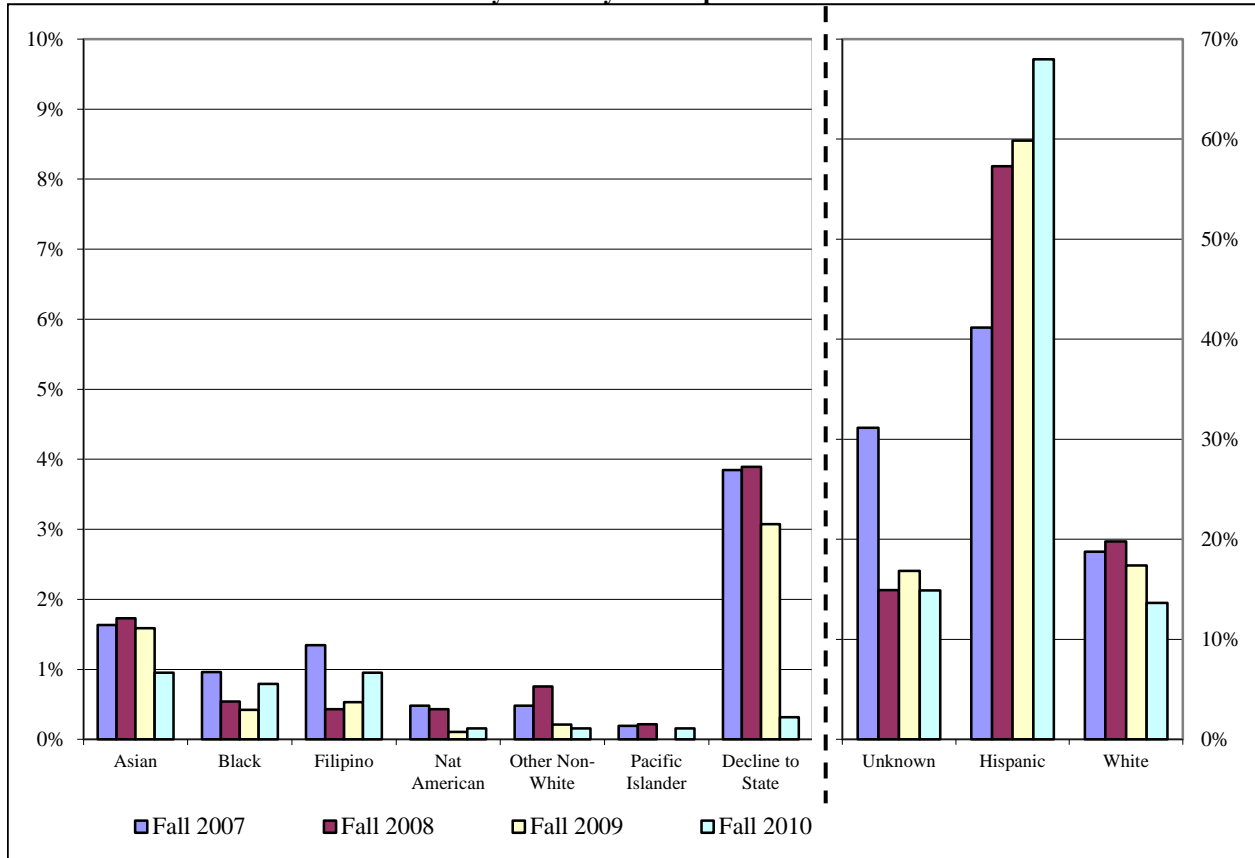


*Please note that noncredit enrollment has been restated to include students that may also be enrolled in credit courses. This criterion was changed in the 2002 Fact Book.

Noncredit* Fall Semester Enrollment by Ethnicity -- Campus Eve

Campus Eve								
Ethnicity	Fall 2007		Fall 2008		Fall 2009		Fall 2010	
	#	% of total	#	% of total	#	% of total	#	% of total
Asian	17	1.6%	16	1.7%	15	1.6%	6	1.0%
Black	10	1.0%	5	0.5%	4	0.4%	5	0.8%
Filipino	14	1.3%	4	0.4%	5	0.5%	6	1.0%
Nat American	5	0.5%	4	0.4%	1	0.1%	1	0.2%
Other Non-White	5	0.5%	7	0.8%	2	0.2%	1	0.2%
Pacific Islander	2	0.2%	2	0.2%	0	0.0%	1	0.2%
Decline to State	40	3.8%	36	3.9%	29	3.1%	2	0.3%
Unknown	324	31.2%	138	14.9%	159	16.8%	94	14.9%
Hispanic	428	41.2%	530	57.3%	565	59.9%	429	68.0%
White	195	18.8%	183	19.8%	164	17.4%	86	13.6%
Total	1040	100.0%	925	100.0%	944	100.0%	631	100.0%

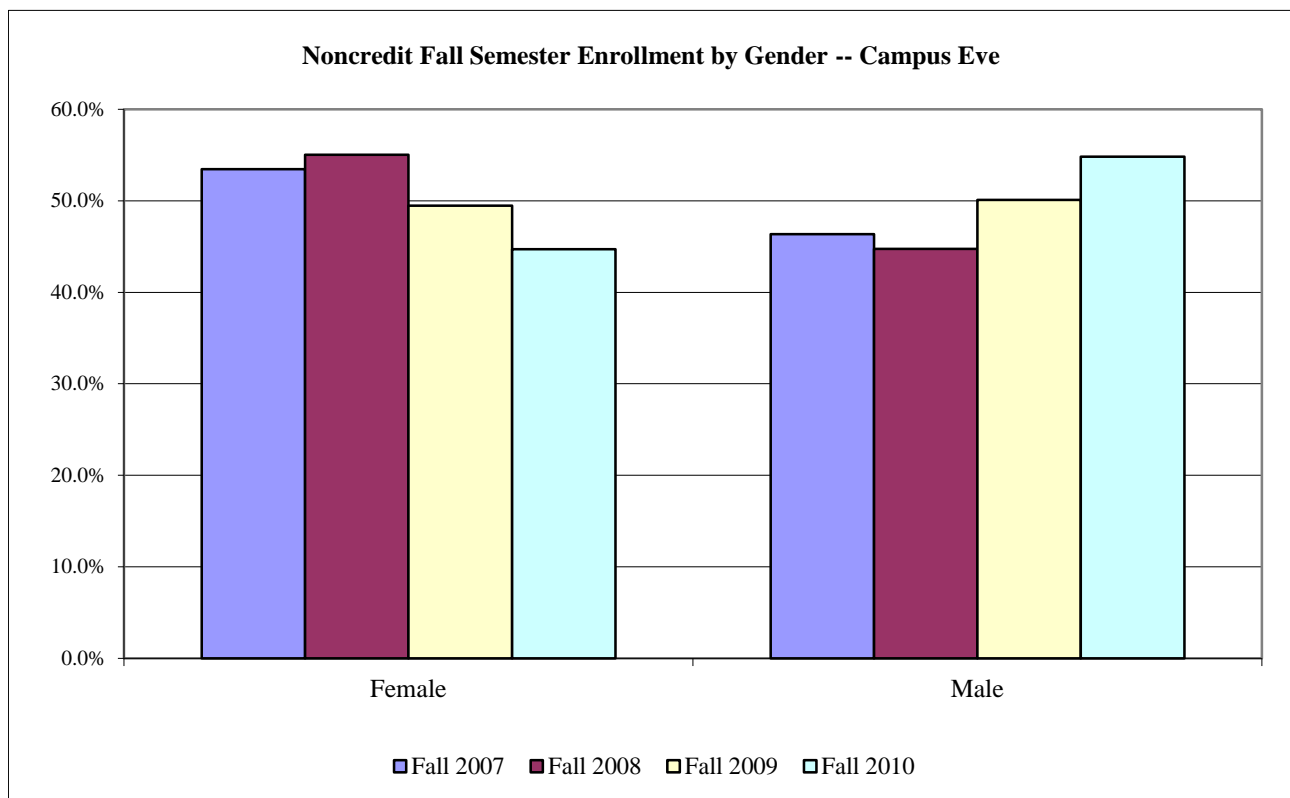
Noncredit Fall Semester Enrollment by Ethnicity -- Campus Eve



*Please note that noncredit enrollment has been restated to include students that may also be enrolled in credit courses. This criterion was changed in the 2002 Fact Book.

Noncredit* Fall Semester Enrollment by Gender -- Campus Eve

Campus Eve								
Gender	Fall 2007		Fall 2008		Fall 2009		Fall 2010	
	#	% of total	#	% of total	#	% of total	#	% of total
Female	556	53.5%	509	55.0%	467	49.5%	282	44.7%
Male	482	46.3%	414	44.8%	473	50.1%	346	54.8%
Unknown/Unreported	2	0.2%	2	0.2%	4	0.4%	3	0.5%
Total	1040	100.0%	925	100.0%	944	100.0%	631	100.0%



**Please note that noncredit enrollment has been restated to include students that may also be enrolled in credit courses. This criterion was changed in the 2002 Fact Book.*